



Guide Price

£230,000

Freehold

2x  1x  1x 

**Elm Road, St Mary's Bay,
Romney Marsh, Kent,
TN29**

OVER 60?

Secure this property
for up to **59% less!**

Wards
Helping you move forwards



Main features

- End of chain so a quick sale is possible
- Quiet residential mews
- Ideal home for keen DIYer with huge potential
- Secure manageable garden
- Walking distance to the beach, shops and amenities

Accommodation

GROUND FLOOR

Entrance Hall

Lounge/Diner: 18'4 x 11'4 (5.59m x 3.46m) plus 6'5 x 6'4 (1.96m x 1.93m)

Kitchen: 11'6 x 8'8 (3.51m x 2.64m)

Bedroom 1: 12'6 x 10'8 (3.81m x 3.25m)

Bedroom 2: 8'7 x 8'5 (2.62m x 2.57m)

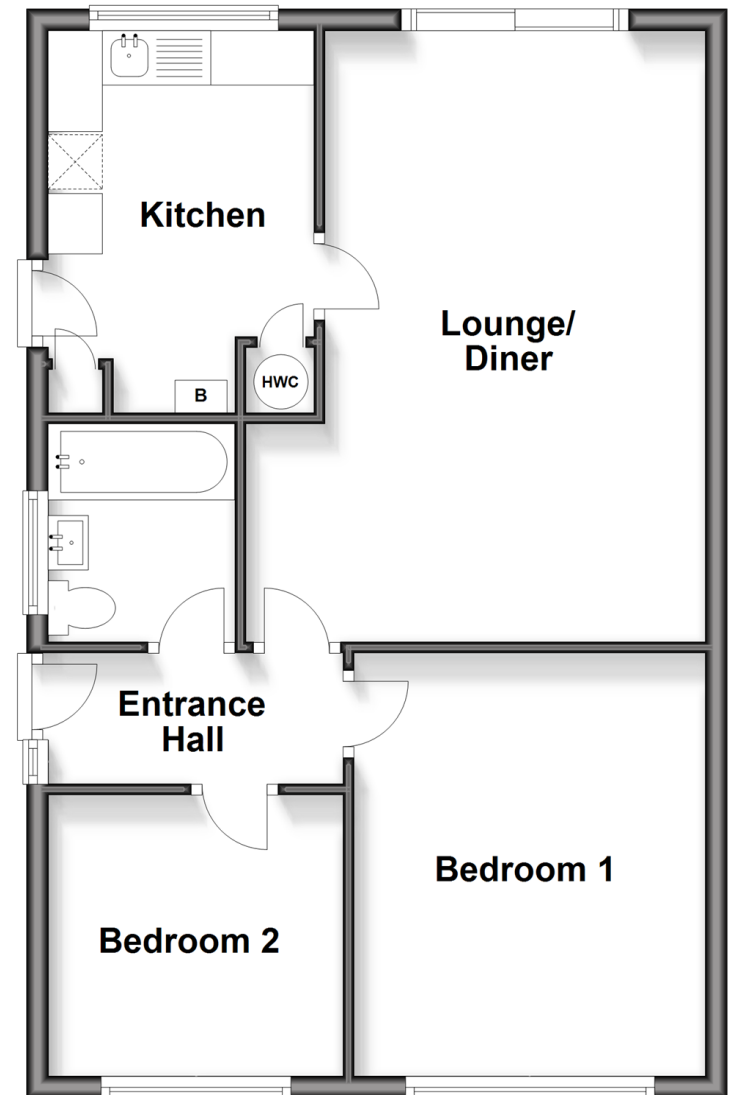
Bathroom

OUTSIDE

Front & Rear Gardens
Garage En-Bloc

Ground Floor

Approx. 58.2 sq. metres (626.9 sq. feet)



Call New Romney - 01797 363745 ■ wardsofkent.co.uk

■ Through a Homewise Home For Life Plan people aged 60+ can secure this property for up to 59% less, by purchasing a Lifetime Lease



13526115/20260411/TT/CA