



9 HOLLINS AVENUE, CLIVIGER, BB10 4JF

OFFERS AROUND £210,000 [NO CHAIN]



Positioned at the head of a quiet cul-de-sac beside Towneley parkland, this well-presented dormer-style semi-detached home offers versatile living in a highly sought-after semi-rural setting. Ideally located for both countryside walks and town amenities, with Hurstwood, Worsthorne and Pike Hill close by, the property features flexible accommodation including a potential third bedroom at ground floor level. Recently refurbished, it boasts bright, well-proportioned interiors throughout, complemented by a mature enclosed rear garden enjoying stunning panoramic views over the Towneley Estate and Cliviger Valley.



CLIFFORD SMITH
SUTCLIFFE

ALL UNDER ONE ROOF



rightmove

36 Manchester Road, BURNLEY, BB11 1HJ. Also in Padiham. 01282 415057 Email: EstateAgents@cliffordsmithsutcliffe.net



Clifford Smith Sutcliffe is a trading name of Smith Sutcliffe Solicitors. Smith Sutcliffe is Authorised and Regulated by the Solicitors Regulation Authority, Registration No. 55532. The principal office is at 50 Manchester Road, Burnley, BB11 1HJ. A list of the names of the Partners is available from that office upon request.

Occupying an enviable position at the head of a quiet cul-de-sac, this attractive dormer-style semi-detached home enjoys a superb setting bordering Towneley parkland, within a highly sought-after semi-rural development. Ideally located on the outskirts of Burnley, the property offers the perfect balance of countryside living and convenience, with the picturesque villages of Hurstwood and Worsthorne close by, while Pike Hill shopping parade and Burnley town centre (approximately two miles away) remain easily accessible.

The property provides versatile and well-proportioned accommodation, including a flexible ground floor reception room which could serve as a third bedroom—ideal for growing families or those looking to downsize. Having undergone a programme of refurbishment in recent years, the home presents a bright, well-maintained interior throughout.

Externally, a mature enclosed rear garden enhances the appeal, offering a peaceful space to relax while enjoying far-reaching panoramic views across the Towneley Estate and Cliviger Valley.

BRIEFLY COMPRISING:- ENTRANCE PORCH, RECEPTION HALLWAY, TWO/THREE RECEPTION SPACES, KITCHEN, SHOWER ROOM, TWO DOUBLE SIZED BEDROOMS TO THE FIRST FLOOR, LAWNED GARDEN TO FRONT, PRIVATE DRIVEWAY PROVIDING OFF-ROAD PARKING TO A DETACHED GARAGE, PRIVATE MATURE GARDEN TO THE REAR.

The Accommodation Afforded is as follows:-

Square Pane Frosted Glazed Panelled Entrance Door

Opening into:-

Entrance Porch

3'0" x 2'08" Laminate wood floor. Square pane frosted glazed panelled door opening into:-

Reception Hallway

Stairs ascending to the first floor level, laminate wood floor, inbuilt meter cupboard, radiator. Gloss panelled door leading from the hallway and opening into:-

Reception Room One

13'0" x 11'09" into chimney breast recess. Feature fireplace with marble inlay / hearth and inset coal-effect living flame gas fire, coved ceiling, radiator. UPVC framed double glazed picture-window to the front elevation. Opening into:-

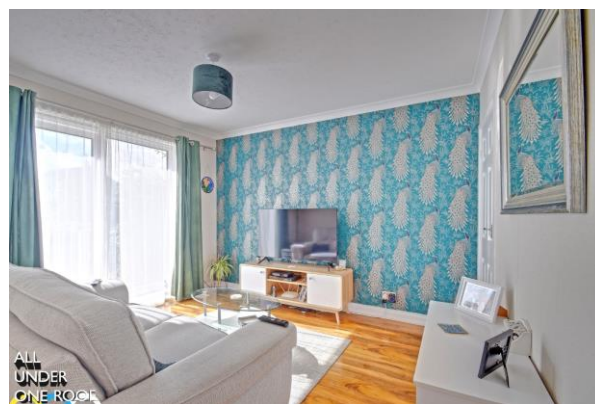


Reception Room Two

7'05" x 9'09" Coved ceiling, radiator. UPVC framed double glazed window to the front elevation.

Reception Room Three / Bedroom

11'09" x 11'11" into door recess. Laminate wood floor, radiator, coved ceiling, understairs storage cupboard. UPVC framed double glazed sliding patio-style doors leading out into the private rear garden.





Kitchen

8'05" x 10'08" Modern composite sink unit and drainer with cupboards under, matching range of wall and base units incorporating stainless steel oven / grill and four ring gas hob with extractor canopy over, co-ordinating worktops and part-tiled walls with concealed illumination, plumbing for washing machine, space for tumble dryer and American-style fridge freezer, inset spot lighting to ceiling, concealed gas combination boiler. UPVC framed double glazed windows to the side and rear elevation, UPVC door with frosted double glazed centre panel opening into the rear garden.



Shower Room

6'10" x 5'06" Three piece white suite incorporating pedestal wash basin, low-level WC and step-in multi-function shower cubicle, tiled walls, heated towel rail. UPVC framed frosted double glazed window.

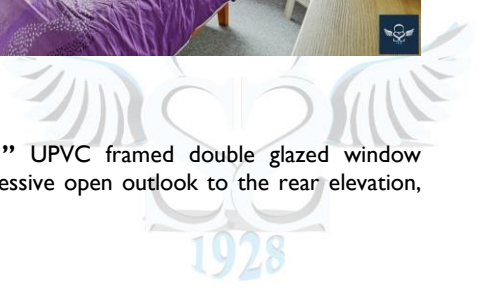
First Floor Landing

6'01" x 11'10" plus recess. Panelled doors leading from landing and opening into:-



Bedroom One

11'09" x 10'03" UPVC framed double glazed window affording an impressive open outlook to the rear elevation, radiator.





Bedroom Two

11'05" x 10'08" UPVC framed double glazed window to the side elevation, radiator, wash basin set into vanity-style unit.



Outside

Lawned garden to the front and block-paved driveway providing off road parking for several vehicles and extending at the side to a detached brick-built garage [16'01" x 9'06"] having up-and-over door, power and lighting installed, UPVC framed frosted double glazed window. Private enclosed mature garden to the rear, laid mainly to lawn with paved patio area, mature flower / shrub borders and timber fencing to the perimeter.

Tenure : Freehold

Energy Performance Certificate Rating : C

Council Tax Band : C

Approximate Square Footage : 919 SqFt / 85.4 SqM

Services :

Mains supplies of gas, water and electricity.

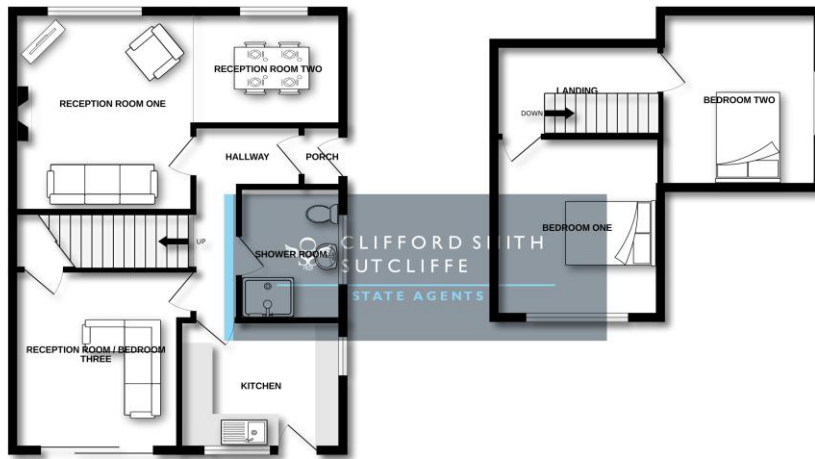
Viewing :

By appointment with our Burnley office.



GROUND FLOOR
609 sq. ft. (56.6 sq.m.) approx.

FIRST FLOOR
310 sq. ft. (28.8 sq.m.) approx.



TWO / THREE BEDROOM DORMER-STYLE SEMI

TOTAL FLOOR AREA : 919 sq. ft. (85.4 sq.m.) approx.

Whilst every attempt has been made to ensure the accuracy of the floorplan contained here, measurements of doors, windows, rooms and any other items are approximate and no responsibility is taken for any error, omission or mis-statement. This plan is for illustrative purposes only and should be used as such by any prospective purchaser. The services, systems and appliances shown have not been tested and no guarantee as to their operability or efficiency can be given.
Made with Metrepack ©2015.

