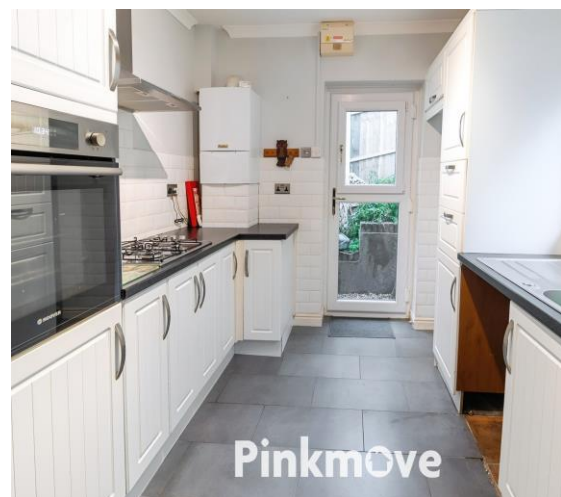




1 Drew Arfon

Guide Price £220,000 to £230,000

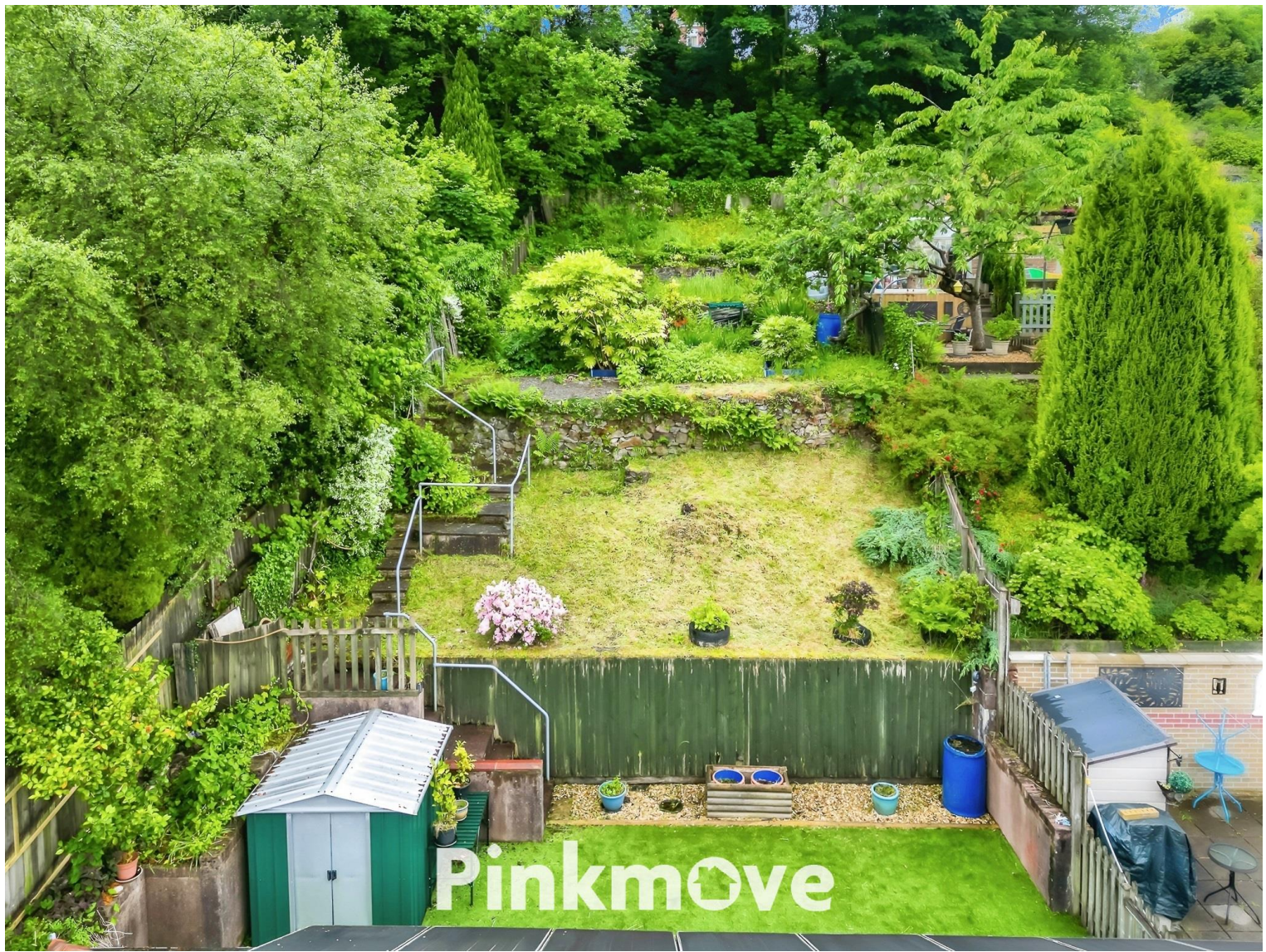
- No Chain
- Bright and Versatile Reception Room
- Shower Room
- Modern Kitchen
- Convenient off-street parking via a shared drive
- Spacious Bedrooms with Built-In Wardrobes
- Beautiful Layered Garden



 2  1  1

Pinkmove

01633 746088
team@pinkmove.co.uk



About the property

This delightful semi-detached bungalow, situated in a peaceful setting offers a harmonious blend of comfort, practicality, and serene living, ideal for small families, professionals, or those looking to downsize without compromise.

Step inside to discover two generously sized bedrooms, each featuring built-in wardrobes that provide ample storage while maintaining a clean, uncluttered aesthetic. Natural light fills the well-proportioned rooms, creating a warm and inviting atmosphere throughout.

A spacious reception room serves as a versatile living area, perfect for entertaining guests or enjoying quiet evenings in. With its neutral palette, it's a blank canvas ready for your personal touch.

The property includes a clean and functional shower room, designed to meet your everyday needs with ease. The thoughtfully laid-out, modern kitchen offers plenty of space for culinary creativity offering practicality and views into the beautifully green garden.

Outside, a peaceful layered garden invites you to relax, garden, or simply enjoy the outdoors. A shared driveway adds to the convenience, offering practical parking solutions.





Accommodation

Living Room

13' 7" x 12' 6" (4.14m x 3.81m)

Kitchen

8' 8" x 12' 6" (2.64m x 3.81m)

Bedroom 2

9' 5" x 10' 2" (2.87m x 3.10m)

Bedroom 1

10' 1" x 7' 8" (3.07m x 2.34m)

Shower Room

5' 6" x 6' 8" (1.68m x 2.03m)

01633 746088

team@pinkmove.co.uk

Pinkmove

Floorplan

Ground Floor

Approx. 58.4 sq. metres (629.0 sq. feet)



Total area: approx. 58.4 sq. metres (629.0 sq. feet)

Drew Afon Bungalow

Important Information

Note while we endeavour to make our sales details accurate and reliable, if there is any point which is of particular interest to you, please contact the office and we will be pleased to confirm the position for you. We have not personally tested any apparatus, equipment, fixtures, fittings or services and cannot verify they are in working order or fit for their purposes. Nothing in these particulars is intended to indicate that carpets or curtains, furnishings or fittings, electrical goods (whether wired or not). Gas fires or light fittings or any other fixtures not expressly included form part of the property offered for sale. This computer generated Floorplan, if applicable, is intended as a general guide to the layout and design of the property. It is not to scale and should not be relied upon for dimensions. Tenure: We cannot confirm the tenure of the property as we have not had access to the legal documents. The buyer is advised to obtain verification from their solicitor or surveyor.

Peter Alan Limited is registered in England and Wales under company number 2073153, Registered Office is Cumbria House, 16-20 Hockliffe Street, Leighton Buzzard, Bedfordshire, LU7 1GN. VAT Registration Number is 500 2481 05. For activities relating to regulated mortgages and non-investment insurance contracts, Peter Alan Limited is an appointed representative of Connells Limited which is authorised and regulated by the Financial Conduct Authority. Connells Limited's Financial Services Register number is 302221. Most buy-to-let

