

Western Gateway, E16

£2,800 Per calendar month

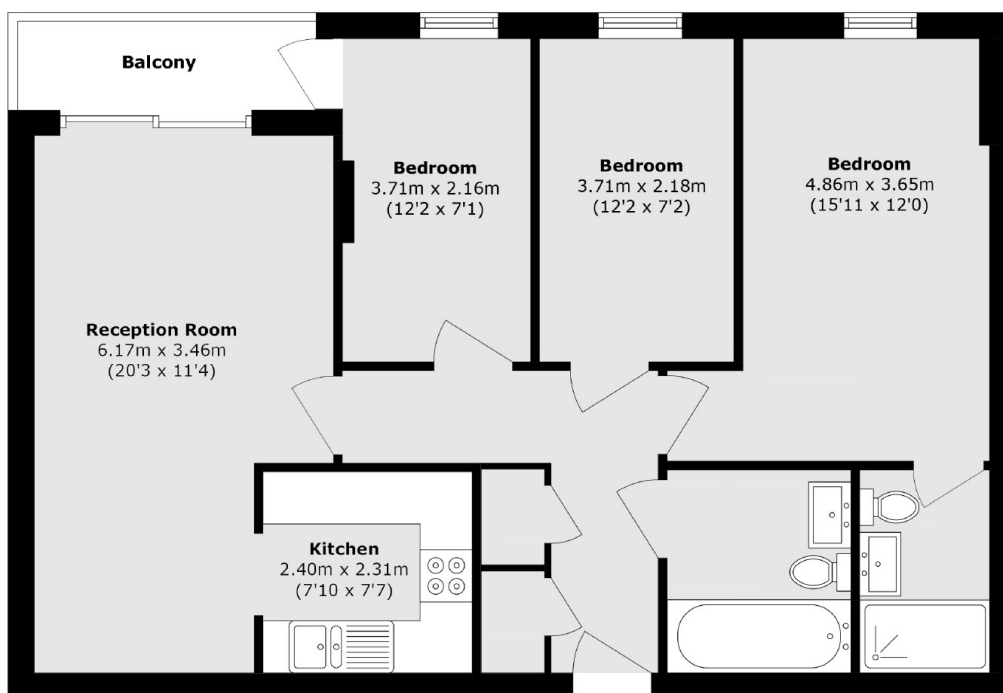
A bright three bedroom apartment on the second floor of this modern development. This apartment has an open plan reception room, wooden flooring, a private balcony and residents gym.

Westgate Apartments is well located for the water sports, bars, and restaurants of Royal Victoria Docks including the popular China Palace.

Features

- Three Bedrooms
- Two Bathrooms
- Second Floor
- Wooden Flooring
- Concierge
- Residents Gym

Western Gateway, London, E16



Total area (approx.): 75.7 sq. m (851.4 sq. ft)
Balcony area (approx.): 3.4 sq. m (36.5 sq. ft)