

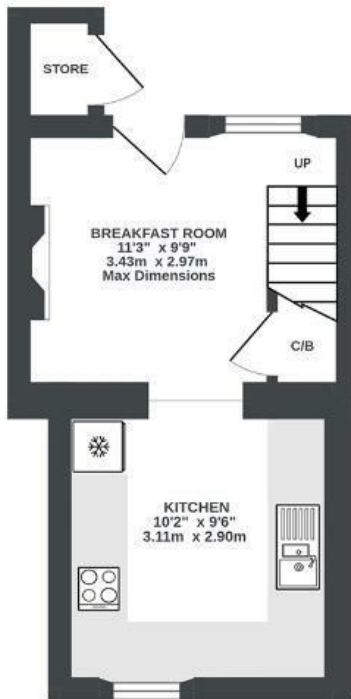
Bath Road

WILLSBRIDGE

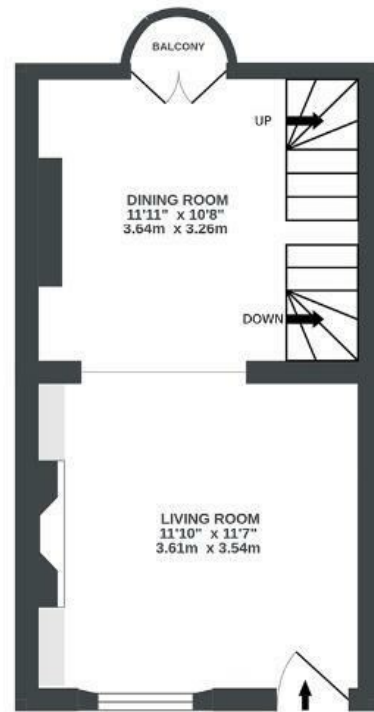
APPROXIMATE FLOOR AREA
82.8 SQM / 891 SQFT



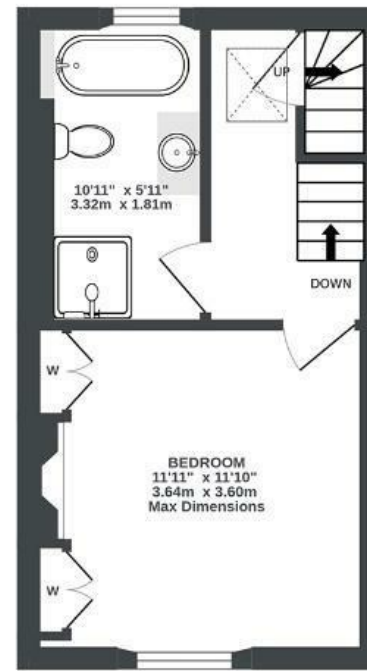
BASEMENT
216 sq.ft. (20.0 sq.m.) approx.



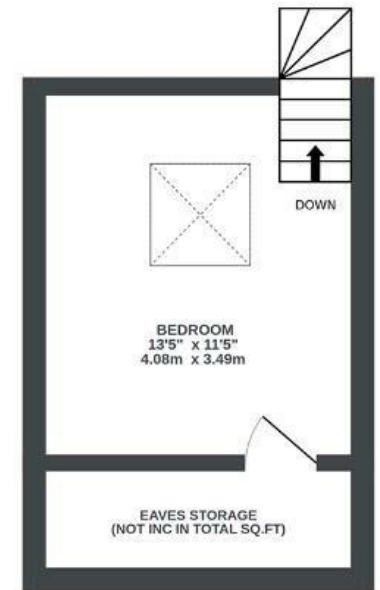
GROUND FLOOR
258 sq.ft. (24.0 sq.m.) approx.



1ST FLOOR
264 sq.ft. (24.5 sq.m.) approx.



2ND FLOOR
153 sq.ft. (14.2 sq.m.) approx.



Illustrations are for reference purposes only, measurements are approximate, not to scale.

Boardwalk

Bath Road

WILLSBRIDGE, BRISTOL



£375,000



2 Bedrooms



BS30 6EF



1 Bathrooms

"We love that our home is easily accessible to both Bristol and Bath with lots of beautiful countryside walks on our doorstep. We enjoy sunny days relaxing in the garden with friends and evenings watching films in our cosy living room."

