

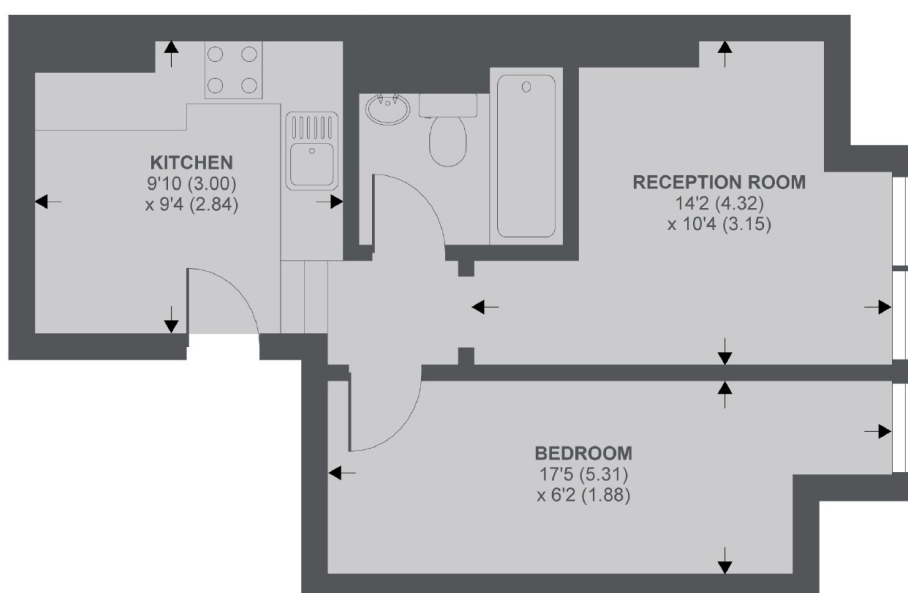


RITHERDON ROAD, SW17

£1,750 PCM

- Ground floor flat
- One bedroom
- Communal garden
- Furnished
- Close to Tooting Bec Station
- Energy rating: D





Ground Floor

APPROX FLOOR AREA 356 SQ.FT 33 SQ.M

Copyright nichecom.co.uk 2019 REF : 462764

JACKSONS BALHAM

8-11 Balham Station Road,
London, SW12 9SG
Sales: 020 8675 6555
Lettings: 020 8675 6565

Energy Rating: D We aim to make our particulars both accurate and reliable. However they are not guaranteed; nor do they form part of an offer or contract. If you require clarification on any points then please contact us, especially if you're traveling some distance to view. Please note that appliances and heating systems have not been tested and therefore no warranties can be given as to their good working order.