

Middle Yard Oberman Road, London, NW10 1DT
£3,200 Per month
EPC Rating: B Council Tax Band: E

STONE



Welcome to Middle Yard, a prestigious development featuring 136 luxury residences across four beautifully designed buildings. Residents enjoy exclusive access to top-tier amenities, including an on-site gym and heated indoor and outdoor swimming pools.

As you enter this flat, you will be greeted by an inviting reception room that seamlessly flows into the rest of the home, creating a perfect environment for relaxation and entertaining. The flat features three spacious bedrooms, each designed to maximise natural light, ensuring a bright and airy atmosphere throughout. With two well-appointed bathrooms, convenience and privacy are at the forefront of this exquisite living space.

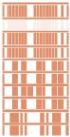
One of the standout features of this property is the large balconies, providing an ideal spot to enjoy your morning coffee or unwind in the evening while taking in the views of the surrounding area. The luxury finishes throughout the flat reflect a commitment to quality and modern living, making it a truly desirable home.



Percy House,
33-34 Gresse Street,
London
W1T 1QU
020 7043 8888
Lettings@stone.london

→ FLOORPLATES

B (BUILDING)
07 (FLOOR)



B7004. 3 BED	
Kitchen	2050 x 3333mm
Living	5954 x 4404mm
Bedroom 1	2900 x 3680mm
Bedroom 2	4006 x 4430mm
Bedroom 3	2984 x 3337mm
Balcony	6 sqm
Balcony	2 sqm
APARTMENT AREA	90 sqm

MIDDLE YARD

