



Park Road, KT1

£359,950

Dexters



Park Road, KT1

This apartment is located in a very popular development close to Royal Bushy Park. It offers two double bedrooms, a balcony and communal gardens along with unallocated parking, one not to be missed.

The entrance hallway is spacious providing access to all rooms. The reception room, lovely and bright has plenty of space to relax as well as dine and provides tranquil living space with views across the development.

The kitchen provides access to a terrace and fire escape leading to the communal gardens. Both of the bedrooms are generous double bedrooms. Completing the living space there is a bathroom.

This development has a shortcut to Hampton Wick station and offers stunning communal gardens with plenty of residents parking.

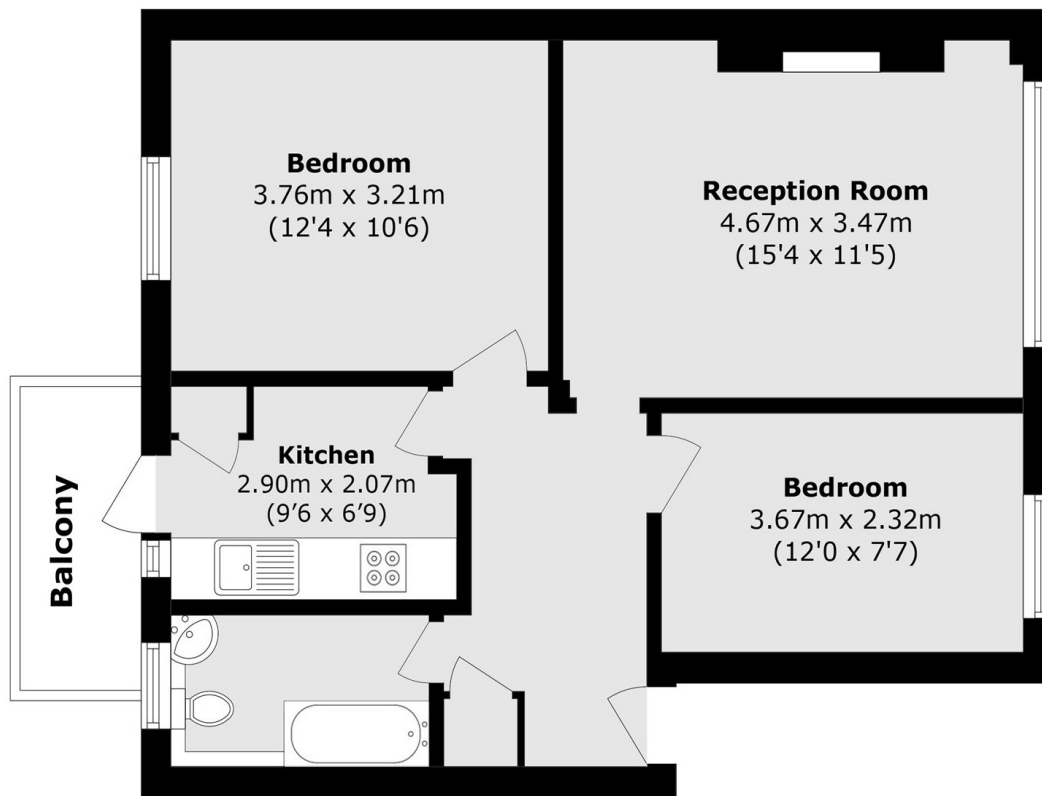
Park Court is located off Park Road, with easy access to Hampton Wick mainline station and a quarter of a mile from Kingston town centre and next to Bushy Park.

Features

- Two Double Bedrooms
- Excellent Location
- Communal Gardens
- Parking
- Great Transport Links
- Balcony



Park Road, Hampton Wick, KT1



Total area (approx.): 56.7 sq. m (610.3 sq. ft)

Balcony Total (approx.): 3.6 sq. m (38.7 sq. ft)