



NEWINGTON
LONDON

2 Bedrooms

Apartment

Located in London

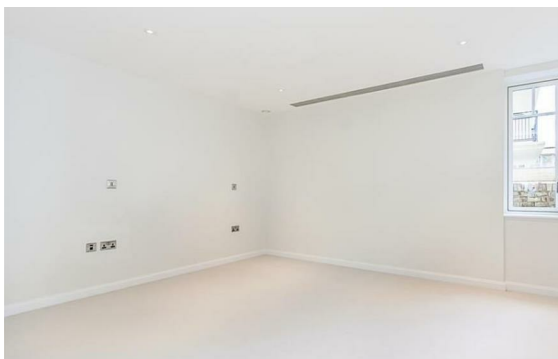
£1,500 Per Month



info@newingtonstates.com

<http://www.newingtonstates.com>

020 7724 2233



A well-presented two-bedroom, two-bathroom apartment located on the ground floor of an attractive building in the prestigious Montagu Square, in the heart of Marylebone. The property benefits from wood flooring throughout, excellent natural light, and well-proportioned living space.

The apartment is well maintained and ideally positioned within one of Marylebone's most sought-after garden square locations. Moments from local amenities, transport links, and the vibrant Marylebone High Street.

EPC rating: C

Energy Efficiency Rating: C

Agents Note: Whilst every care has been taken to prepare these particulars, they are for guidance purposes only. All measurements are approximate and are for general guidance purposes only and whilst every care has been taken to ensure their accuracy, they should not be relied upon and potential buyers/tenants are advised to recheck the measurements.

NEWINGTON LONDON

60 Upper Montagu Street

London

W1H 1SN

020 7724 2233

info@newingtonstates.com

<http://www.newingtonstates.com>