

Millfield Road, TW4

£375,000

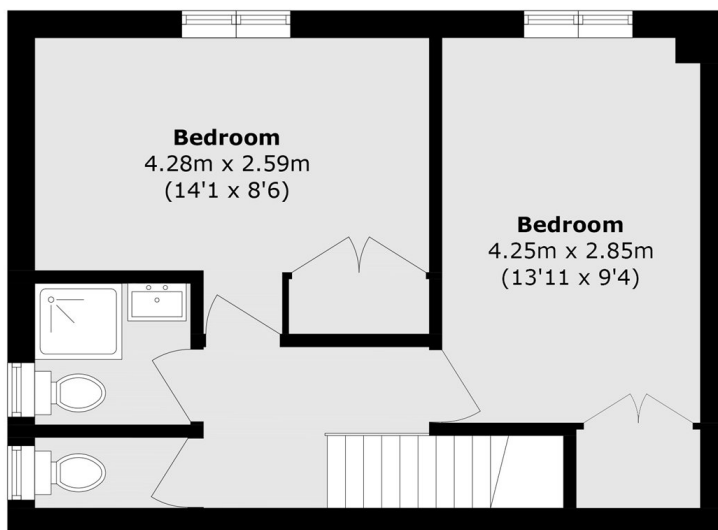
A delightful three bedroom split level apartment over the first and second floor of this purpose built building. With non allocated parking and communal gardens this property is not to be missed.

Millfield Road is located just a short distance South of Hounslow West, making it well connected for commuting. The Orchard Primary School and Suffah Nursery & Primary School, along with several others within about a mile such as St Michael & St Martin Primary School. Whitton train station is about 1.1 miles away, making it the nearest National Rail station.

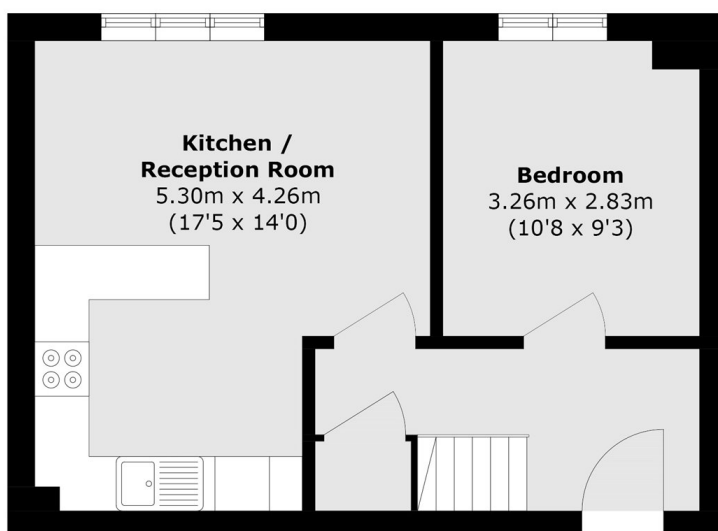
Features

- Three Bedrooms
- Split Level Apartment
- Communal Gardens
- Over 800 sq ft
- Non Allocated Parking
- Fantastic Location

Millfield Road, Hounslow, TW4



Second Floor



First Floor

Total area (approx.): 76.1 sq. m (819.1 sq. ft)