



Leavesden Road

Watford, WD24 5EL

£220,000



A bright and spacious one-bedroom first-floor maisonette situated on the popular Leavesden Road in Watford.

The accommodation comprises an entrance hall with stairs leading to a generous landing/hallway, a spacious lounge, fitted kitchen, double bedroom, and bathroom. The property further benefits from a good-sized loft space and off-street parking.

Conveniently located within easy reach of Watford Junction Station, local amenities, and excellent road links, this property offers fantastic potential for buyers looking to modernise and add value.

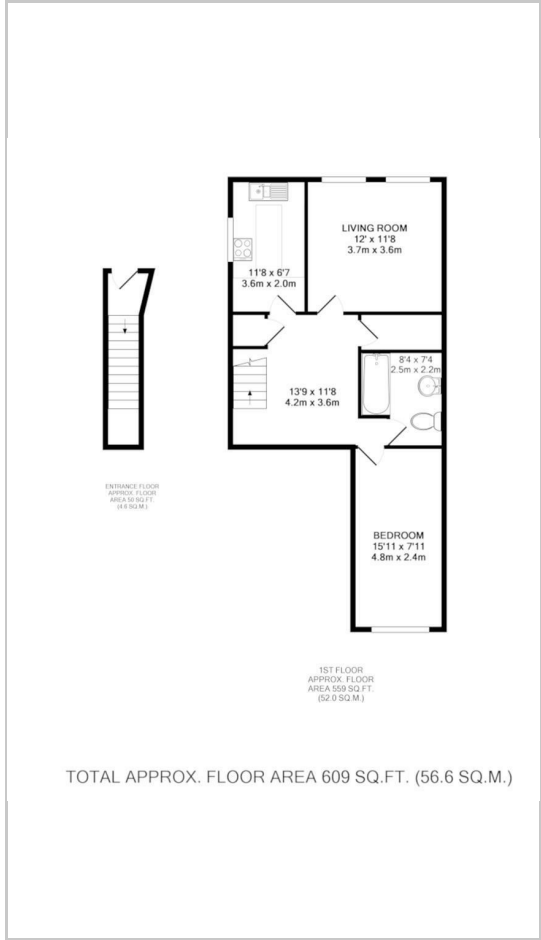
Offered with a Share of Freehold, this is an excellent opportunity for first-time buyers, investors, or those seeking a property with scope for improvement.



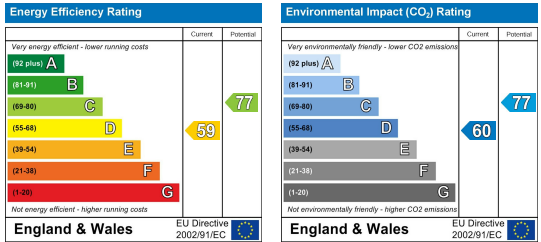
Area Map



Floor Plans



Energy Efficiency Graph



These particulars, whilst believed to be accurate are set out as a general outline only for guidance and do not constitute any part of an offer or contract. Intending purchasers should not rely on them as statements of representation of fact, but must satisfy themselves by inspection or otherwise as to their accuracy. No person in this firm's employment has the authority to make or give any representation or warranty in respect of the property.