

Property ref: 159364

## Palmer Street, Reading, RG1 3GX

£2,100 PCM

**HASLAM'S**  
Lettings



The Bond is a duplex 2-bedroom riverside apartment, in one of central Reading's most exclusive addresses. The ground floor welcomes you with a spacious kitchen/living area, perfect for versatile living. The thoughtfully designed first floor includes a master bedroom with fitted wardrobes and a stylish en-suite for added convenience, complemented by an additional bathroom to serve the second bedroom. Residents have access to the Huntley Wharf Concierge (open 12 hours a day, 7 days a week) for your convenience.

Reading Borough Council tax band D.

### Available Now

- Duplex 2 bedroom apartment; Finished to an exceptional standard
- Fully fitted kitchen with high quality appliances
- No parking; Furnished; EPC rating B
- En-suite plus family bathroom
- Hot water and heating via communal boiler
- One month deposit; Managed by Touchstone

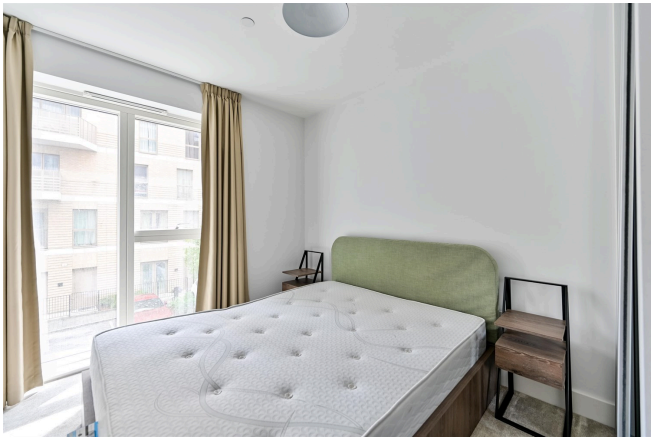
\*Fees For Assured Periodic Tenancies: when you rent a property from us you will be required to pay a sum equivalent to one weeks' rent for a holding deposit. Upon successful application, this amount will be off set against your first months' rent. You will also be required to pay a security deposit equivalent to 5 weeks' rent which will be held and protected in line with Deposit legislation. For more information about our fees please visit: [www.haslams.net](http://www.haslams.net)  
Fees for all other tenancies (Non Housing Act Tenancies / Company Lets): when you rent a property from us we will charge you a one-off fee per property. This charge is the equivalent of 15 days of the monthly rental charge (+VAT) with a minimum fee of £450 (inc.VAT) up to a maximum of £650 (inc.VAT). Other fees may apply depending on your circumstances.

**0118 960 1055**

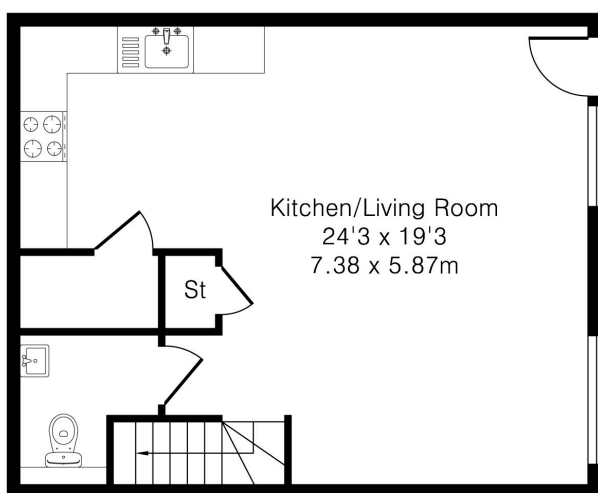
**[lettings@haslams.net](mailto:lettings@haslams.net) [www.haslams.net](http://www.haslams.net)**

**Haslams Estate Agents Ltd, 159 Friar Street, Reading, Berkshire, RG1 1HE**

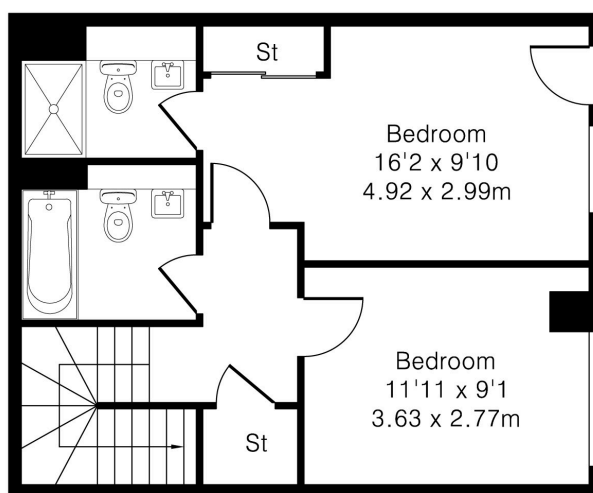
Broadband/Mobile Info: Connections available. For an indication of specific speeds and supply of Broadband and Mobile, we advise applicants go to the Ofcom website Broadband and Mobile Coverage Checker.



Approximate Gross Internal Area 908 sq ft – 84 sq m  
Ground Floor Area 454 sq ft – 42 sq m  
First Floor Area 454 sq ft – 42 sq m



Ground Floor



First Floor