



SALES & LETTINGS
— ANGELS —



63 Kingsland Terrace

, Pontypridd, CF37 1RX

£2,250 Per Calendar Month

Reference: 17361117

ONLINE AND PHYSICAL VIEWING AVAILABLE

6 BEDROOM HOUSE - 2 BATHROOMS - AVAILABLE 1ST JULY 2026 - BILLS EXCLUDED - £375 PER PERSON PER MONTH - FULLY FURNISHED

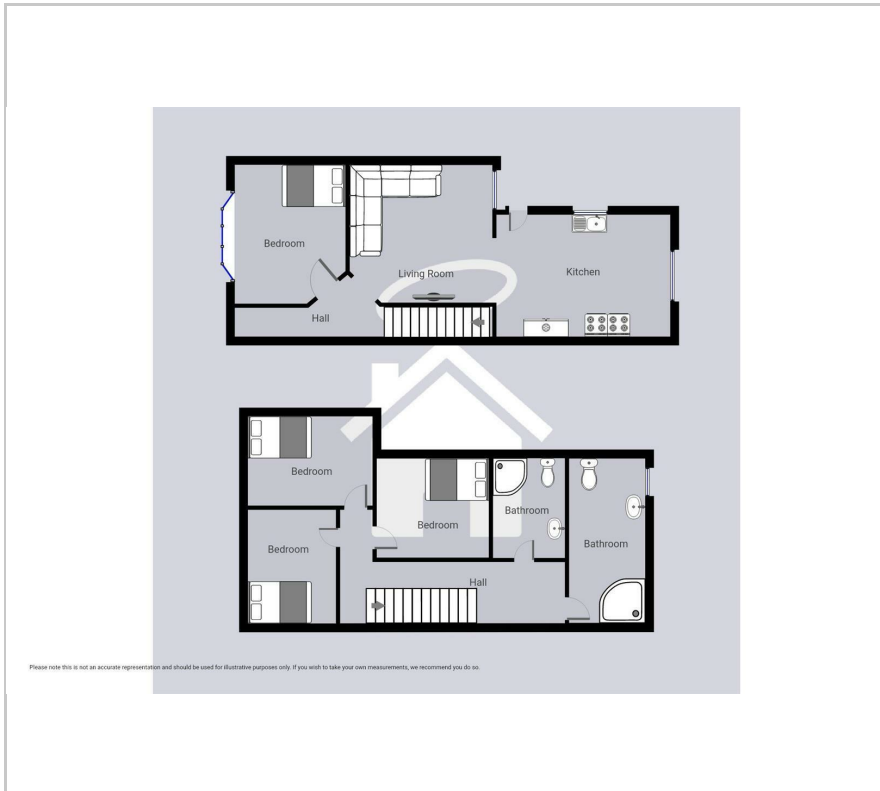
- 6 bedroom house
- 2 bathrooms
- Modern throughout
- £375 per person PCM
- Amazing large kitchen
- Available 1st July 2026
- Located in Pontypridd

Viewing

Please contact our Cathays Head Office Office on 02922331425 if you wish to arrange a viewing appointment for this property or require further information.



Floor Plan



Area Map



Energy Efficiency Graph

Energy Efficiency Rating		Current	Potential
Very energy efficient - lower running costs			
(92 plus) A			
(81-91) B			
(69-80) C			
(55-68) D			
(39-54) E			
(21-38) F			
(1-20) G			
Not energy efficient - higher running costs			
England & Wales		EU Directive 2002/91/EC	



These particulars, whilst believed to be accurate are set out as a general outline only for guidance and do not constitute any part of an offer or contract. Intending purchasers should not rely on them as statements of representation of fact, but must satisfy themselves by inspection or otherwise as to their accuracy. No person in this firm's employment has the authority to make or give any representation or warranty in respect of the property.