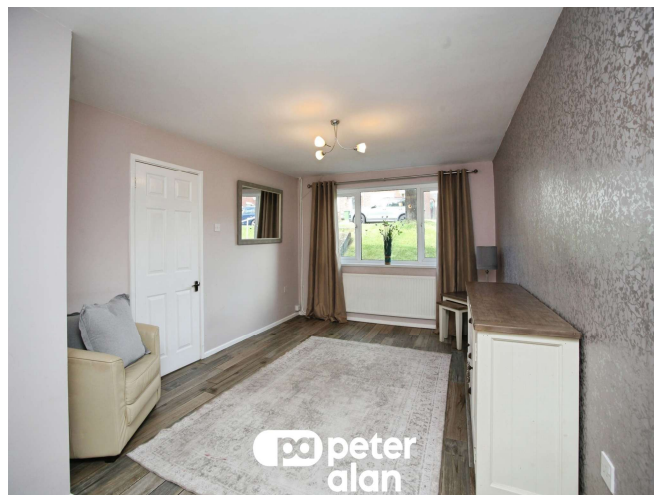




Croeso Square, offers in excess of £170,000

- End Of Terrace
- Three Bedrooms
- Great Location
- No Onward Chain
- EPC Rating: C



 3  1  1



About the property

Situated in the sought-after Croeso Square, Blackwood, this well-maintained three-bedroom end-of-terrace property offers an excellent opportunity for first-time buyers, families, or investors alike. Ideally positioned within walking distance of the high street and a wide range of local amenities, the home combines convenience with comfortable living and is offered to the market with no onward chain.

The property welcomes you with a bright and inviting entrance hallway that leads into a spacious lounge, perfect for relaxing or entertaining. The layout flows through to a well-proportioned kitchen and dining area, offering ample storage and workspace, with plenty of natural light creating a warm and homely atmosphere.

Upstairs, the property boasts three generously sized bedrooms, all well presented and versatile to suit a variety of needs, whether as bedrooms, a home office, or guest accommodation. The family bathroom is conveniently located and finished in a clean, neutral style.

Externally, the property benefits from its end-of-terrace position, providing a little extra privacy and outdoor space. To the rear, there is the added advantage of off-road parking, a highly desirable feature for this



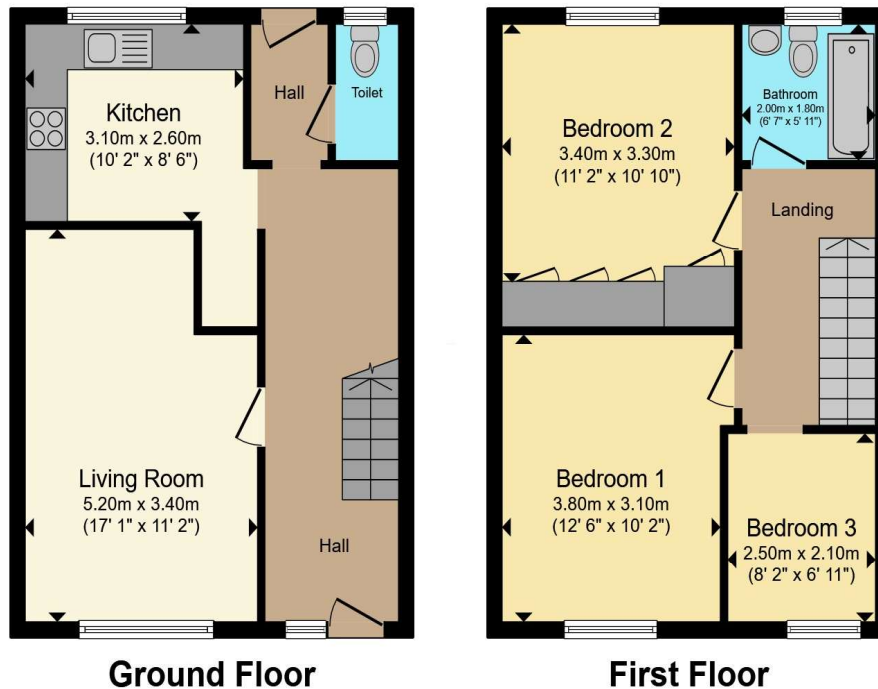
pa peter
alan

Accommodation

01495 231199

blackwood@peteralan.co.uk

Floorplan



Total floor area 83.7 m² (901 sq.ft.) approx

This floor plan is for illustrative purposes only. It is not drawn to scale. Any measurements, floor areas (including any total floor area), openings and orientation are approximate. No details are guaranteed, they cannot be relied upon for any purpose and they do not form part of any agreement. No liability is taken for any error, omission or misstatement. A party must rely upon its own inspection(s). Powered by www.propertybox.io



Important Information

Note while we endeavour to make our sales details accurate and reliable, if there is any point which is of particular interest to you, please contact the office and we will be pleased to confirm the position for you. We have not personally tested any apparatus, equipment, fixtures, fittings or services and cannot verify they are in working order or fit for their purposes. Nothing in these particulars is intended to indicate that carpets or curtains, furnishings or fittings, electrical goods (whether wired or not). Gas fires or light fittings or any other fixtures not expressly included form part of the property offered for sale. This computer generated Floorplan, if applicable, is intended as a general guide to the layout and design of the property. It is not to scale and should not be relied upon for dimensions. Tenure: We cannot confirm the tenure of the property as we have not had access to the legal documents. The buyer is advised to obtain verification from their solicitor or surveyor.

Peter Alan Limited is registered in England and Wales under company number 2073153, Registered Office is Cumbria House, 16-20 Hockliffe Street, Leighton Buzzard, Bedfordshire, LU7 1GN. VAT Registration Number is 500 2481 05. For activities relating to regulated mortgages and non-investment insurance contracts, Peter Alan Limited is an appointed representative of Connells Limited which is authorised and regulated by the Financial Conduct Authority. Connells Limited's Financial Services Register number is 302221. Most buy-to-let

