



Bingham Place, W1U

£6,391 Per calendar month

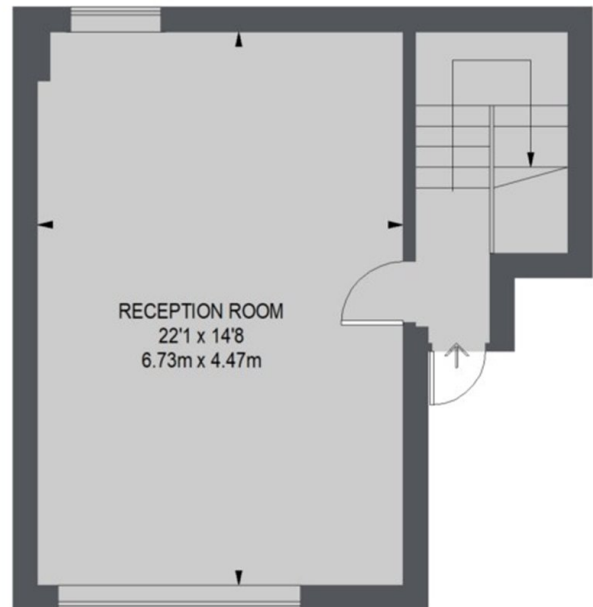
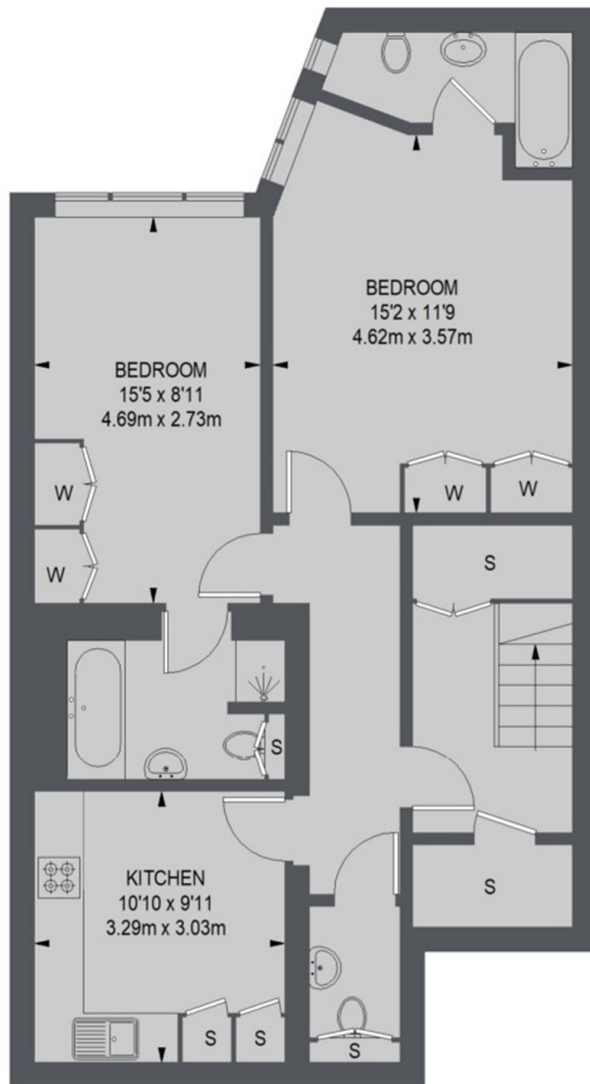
This two bedroom apartment is on the first and second floors of a well-maintained mews house in the heart of Marylebone Village. The property has been refurbished throughout and has an open plan kitchen/reception, two bedrooms and two bathrooms.

The property is well placed for the boutique shops and restaurants of Marylebone, with Baker Street and Bond Street underground stations nearby.

Features

- Split-Level Apartment
- Kitchen/Reception
- Two Bedrooms
- Two Bathrooms
- Wood Flooring
- Modern Specification

Bingham Place, London, W1U



TOTAL APPROX. FLOOR AREA 1161 SQ. FT. (107.85 SQ. M.)