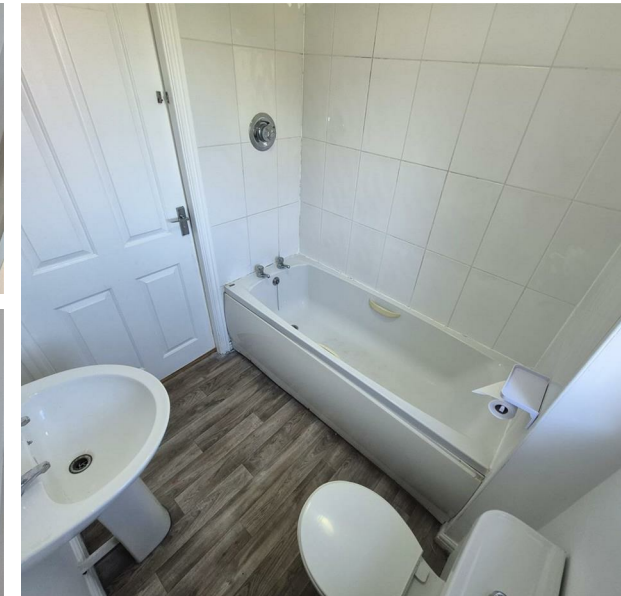


Walton Lane, Liverpool, L4 4HQ

£100,000

Council Tax Band: A



You are invited to view this modern two-bedroom apartment located on Walton Lane, Liverpool.

An ideal home for first time buyers and also provides the perfect opportunity as a rental property, with access to local football teams within walking distance being an added bonus.

Entering the property on the first floor you are greeted by a long hallway with storage and access to all of the rooms.

The large living room, is neutrally decorated with carpeted floor, providing a great space for relaxing and entertaining.

The fitted kitchen is practical, featuring tiled splash back, a range of wall and floor cabinets and integrated electric oven and hob.

With two bedrooms, each again decorated in a neutral style and carpeted.

The bathroom features a white three-piece suite complete with a chrome ladder style towel heater/radiator.

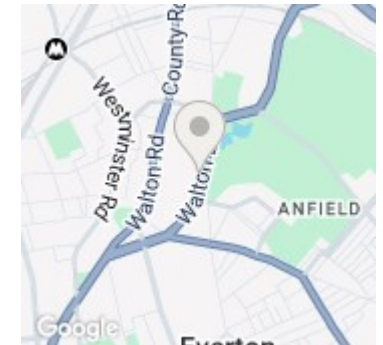
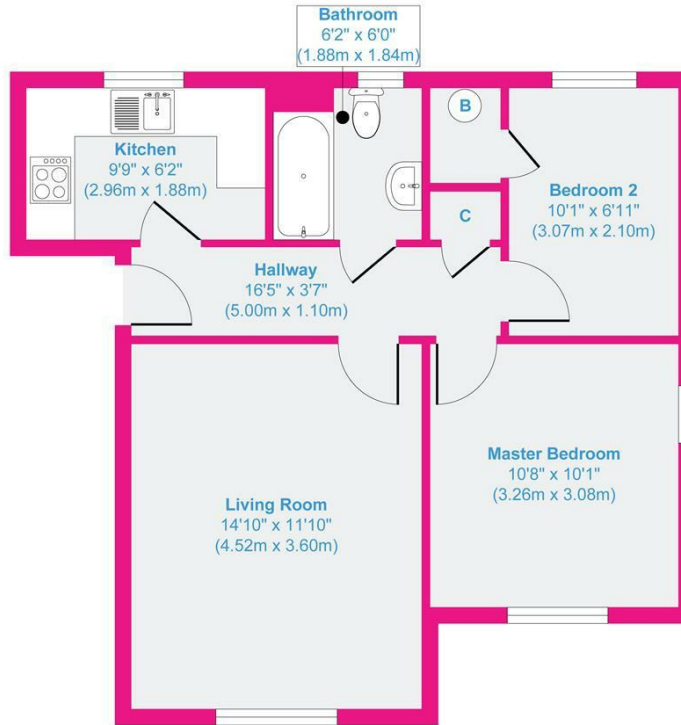
Externally, the property benefits from allocated parking, providing convenience and peace of mind (especially on busy match days).

The location on Walton Lane offers easy access to local amenities, public transport and is a short distance from Liverpool city centre (less than 2 miles to Liverpool John Moores City Campus).



Open House West Wirral

127 Walton Lane, Liverpool, L4 4HQ



Floor Plan



Approx. Gross Internal Floor Area 544 sq. ft / 50.57 sq. m

Illustration for identification purposes only, measurements are approximate, not to scale.

Produced by Elements Property

Energy Efficiency Rating		Current	Potential
Very energy efficient - lower running costs			
(92 plus)	A		
(81-91)	B		
(69-80)	C		
(55-68)	D		
(39-54)	E		
(21-38)	F		
(1-20)	G		
Not energy efficient - higher running costs			
		80	85
England & Wales		EU Directive 2002/91/EC	