

Mount Park Road

Eastcote Village • Middlesex • HA5 2JS
Offers In Excess Of: £700,000



coopers
est 1986

Mount Park Road

Eastcote Village • Middlesex • HA5 2JS

This beautifully renovated three bedroom semi detached chalet home comes to the market in excellent condition throughout and is offered with no onward chain, making it an ideal purchase for families and downsizers alike. The property offers bright and versatile accommodation across two floors, featuring a spacious open plan kitchen/living area, a large utility room, a modern shower room and bathroom, along with well proportioned bedrooms and a useful study space. Finished to a high standard, the home blends contemporary styling with practical family living.

Externally, the property benefits from off street parking to the front and a beautifully landscaped rear garden, perfect for entertaining and outdoor enjoyment, with the added advantage of a detached garage positioned at the back of the garden. Situated on the ever popular Mount Park Road in the heart of Eastcote Village, the home is conveniently located close to highly regarded local schools, a variety of shops and amenities, and excellent tube links providing easy access into London.

Chain free

Semi detached Chalet

Three bedrooms

Two bathrooms

Open plan living space

Kitchen

Utility

Garden

Garage

Off street parking

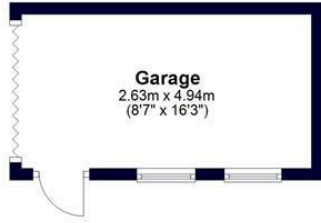
These particulars are intended as a guide and must not be relied upon as statements of fact. Your attention is drawn to the Important Notice on the last page.



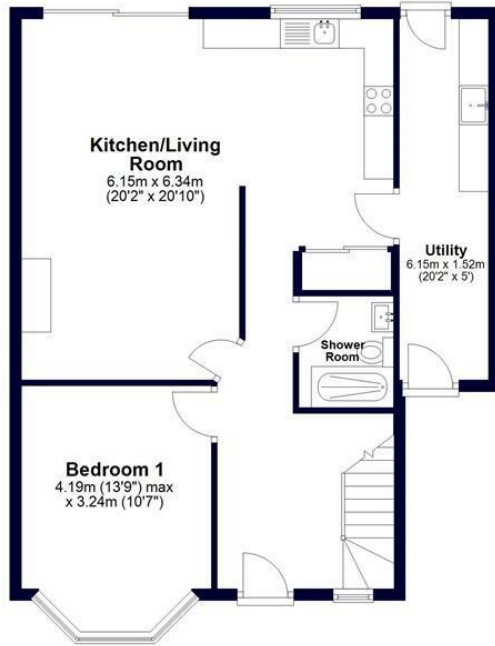


Ground Floor

Approx. 72.0 sq. metres (774.8 sq. feet)
(excluding Garage)



Garage
2.63m x 4.94m
(8'7" x 16'3")



Kitchen/Living Room
6.15m x 6.34m
(20'2" x 20'10")

Utility
6.15m x 1.52m
(20'2" x 5')

Shower Room

Bedroom 1
4.19m (13'9") max
x 3.24m (10'7")

First Floor

Approx. 33.2 sq. metres (357.5 sq. feet)



Bedroom 2
2.89m x 3.44m
(9'6" x 11'3")

Bedroom 3
2.89m x 2.80m
(9'6" x 9'2")

Bathroom

Study
2.31m x 3.89m
(7'7" x 12'9")

Total area: approx. 105.2 sq. metres (1132.3 sq. feet)

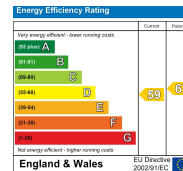


Whilst every effort has been made to ensure the accuracy of this floor plan, measurements of doors, windows, rooms and other items are approximate and no responsibility is taken for any errors. This plan is for illustrative purposes only and should be used as such by any prospective purchaser.
©Property Pot. Produced on behalf of Coopers Residential.



**126-128 High Street, Ruislip,
Middlesex, HA4 8LL**
ruislipsales@coopersresidential.co.uk

CoopersResidential.co.uk



Important Notice: These particulars, whilst believed to be accurate are set out as a general outline only for guidance and do not constitute any part of an offer or contract. Intending purchasers should not rely on them as statements or representation of fact, but must satisfy themselves by inspection or otherwise has the authority to make or give any representation or warranty in respect of the property.