



Chalton Drive Hampstead Garden Suburb N2

Monthly Rental Of £14,000



800 Finchley Road, Hampstead Garden Suburb, London, NW11 7TJ
020 8458 5000
sales@litchfields.com
www.litchfields.com

Offices also in Highgate



A luxurious and substantial Six bedroomed double fronted detached family residence set behind a large carriage driveway in this sought after turning off Holne Chase. This stunning home is currently undergoing a refurbishment and is arranged over 3 floors and offers lutron lighting, remote controlled fireplaces and boasts an 850 sq ft reception room. Other features include oak wood flooring, a brand newly fully fitted kitchen/family room, tv/family/dining room, 5 bathrooms (4 of which will be brand new) (4 en suite), guest cloakroom, brand new utility room, large rear garden. Viewing of this superb family home is an absolute must! Offered Unfurnished. (No TV's provided). ***PLEASE NOTE THAT THE KITCHEN IMAGES ARE COMPUTER GENERATED FROM THE KITCHEN DESIGNER***



6

5

3



- Six Bed Detached House
- Currently Undergoing a refurbishment with new Kitchen & Bathrooms
- 850 sq ft reception room
- Stunning brand new oversized kitchen/family room (Pics are CGI)
- Lutron lighting & oak wood floors
- Close excellent private schools and local amenities as well as Kenwood & The Heath
- Five (4 will be brand new) sumptuous bathrooms (four en suite)
- TV/Office Room

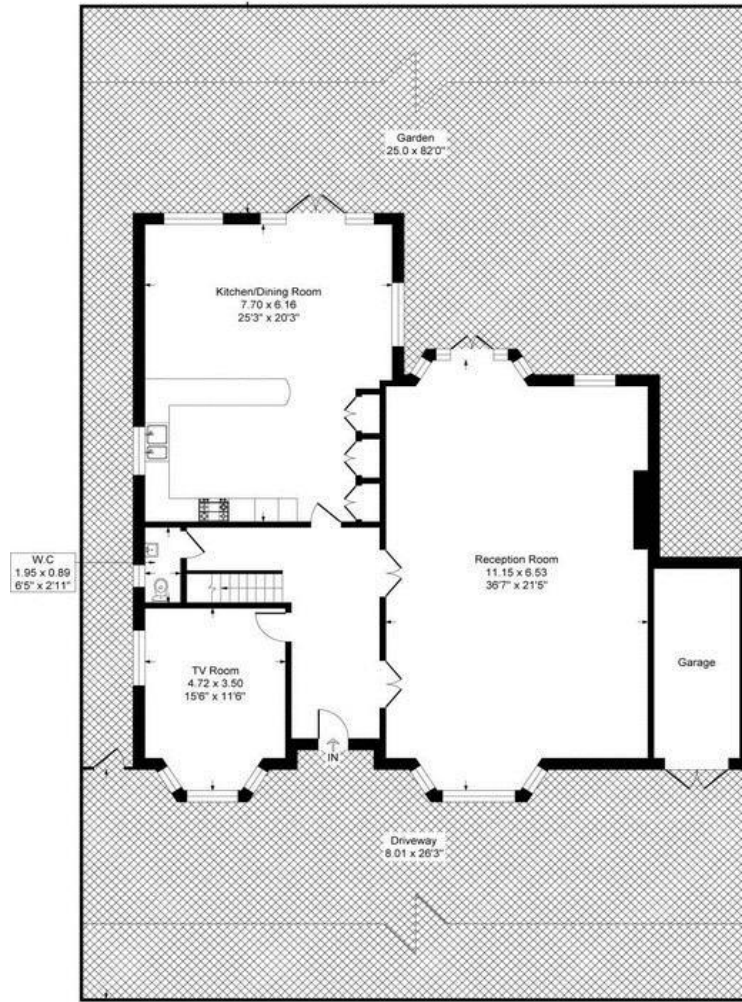




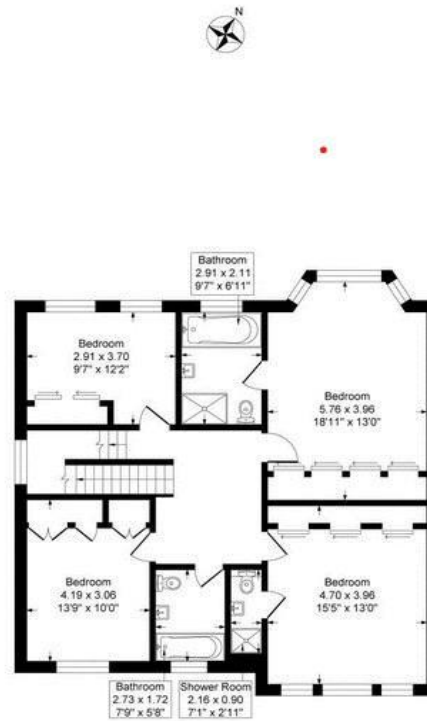


Charlton Drive, London, N2

Approximate Gross Internal Floor Area = 299.8 sq m / 3227 sq ft



Ground Floor



First Floor



Second Floor

Illustration for identification purposes only, measurements are approximate, not to scale.