



Price

£525,000

Freehold

3x  1x  1x 

Cheyne Walk, Meopham,
Kent, DA13

OVER 60?

Secure this property
for up to **59% less!**

Wards
Helping you move forwards



Main features

- On market with no onward chain
- Ample parking with resin-bound spacious driveway with garage
- Downstairs study, perfect for remote working
- Renovated throughout to a high specification with stylish finishes
- Located in a desirable residential area, close to schools and amenities

Accommodation

GROUND FLOOR

- Hallway
- Cloakroom: 7'3 x 3'1 (2.21m x 0.94m)
- Lounge/Dining Area: 24'11 x 9'11 (7.60m x 3.02m)
- Study: 8'10 x 7'6 (2.69m x 2.29m)
- Kitchen/Utility Area: 17'4 x 17'0 (5.29m x 5.19m)

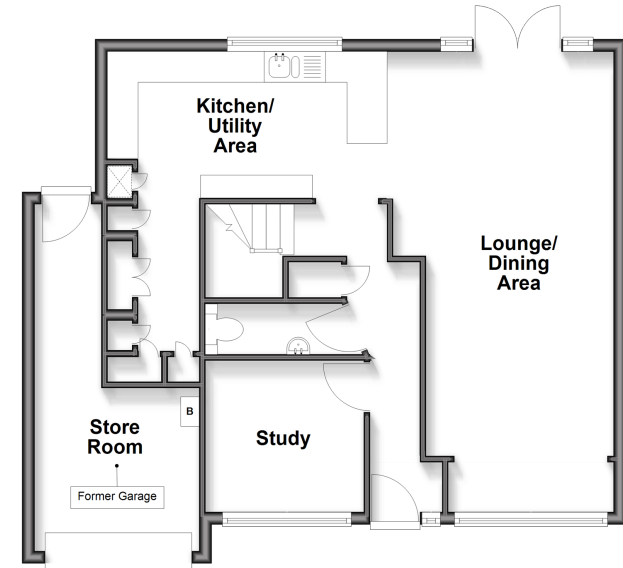
FIRST FLOOR

- Landing
- Bedroom 1: 12'3 x 11'1 (3.74m x 3.38m)
- Bedroom 2: 11'3 x 10'4 (3.43m x 3.15m)
- Bedroom 3: 10'6 x 7'3 (3.20m x 2.21m)
- Bathroom: 8'7 x 7'6 (2.62m x 2.29m)

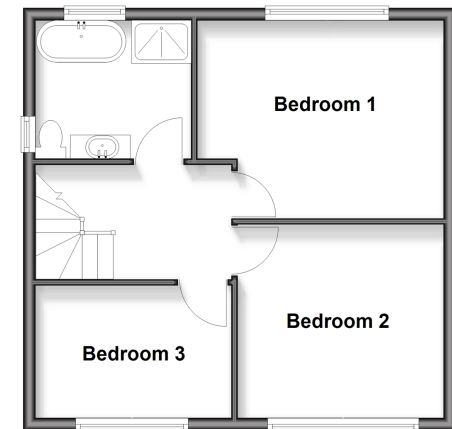
OUTSIDE

- Store Room (former Garage): 18'8 x 8'4 (5.69m x 2.54m)
- Driveway
- Front Garden
- Rear Garden

Ground Floor
Approx. 69.3 sq. metres (745.8 sq. feet)



First Floor
Approx. 43.0 sq. metres (463.0 sq. feet)



Call Meopham - 01474 813100 ■ wardsokent.co.uk

- If buying to rent, please check if Local Authority licensing schemes apply before proceeding
- Through a Homewise Home For Life Plan people aged 60+ can secure this property for up to 59% less, by purchasing a Lifetime Lease



13324827/20260519/SB/KD