

FLETCHERS

ESTATE AGENTS



Marlborough Road, W4

£675,000

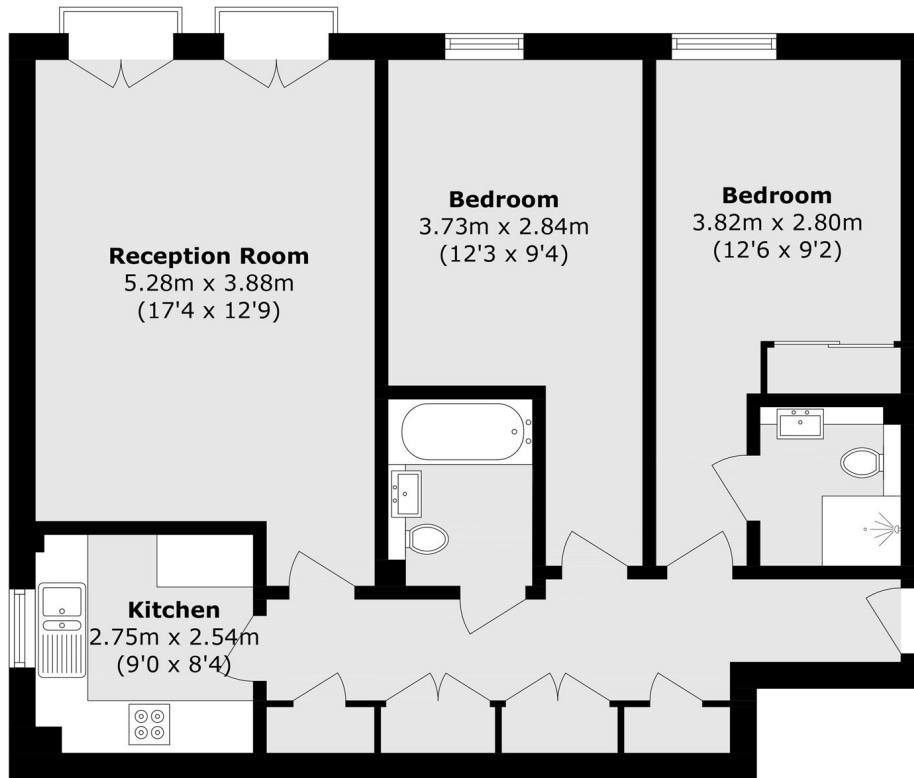
A spacious two bedroom apartment in a central location close to Chiswick amenities. Two double bedrooms are accompanied by two bathrooms, an eat-in kitchen and reception room with Juliet style double doors. Troubridge Court is run by a residents association and comes with a share of freehold which helps keep costs down. There is a large communal garden and secure underground parking.

Marlborough Road is a residential, sought after street just moments from Chiswick High Road, and a few minutes walk from both Chiswick Park and Gunnersbury station. A superb array of shops, restaurants and cafés are on the doorstep, as well as easy access by car via the A4/M4.

- Two Bedrooms • Two Bathrooms • Eat in Kitchen • Underground Parking • Communal Gardens • Share of Freehold •

FLETCHERS

ESTATE AGENTS



Total area (approx.): 76.4 sq. m (822.4 sq. ft)

Fletchers Chiswick Turnham Green Sales
58 Turnham Green Terrace, London, W4 1QP
020 8987 3000
chiswicksales@fletcherestates.com

Energy Rating: . We aim to make our particulars both accurate and reliable. However they are not guaranteed; nor do they form part of an offer or contract. If you require clarification on any points then please contact us, especially if you're traveling some distance to view. Please note that appliances and heating systems have not been tested and therefore no warranties can be given as to their good working order.