



BOWLING GREEN SQUARE, SW12

£470,000

- Central Balham
- Well Presented
- Gated Development
- Roof Terrace
- Open Plan Living Space
- Energy Rating: B





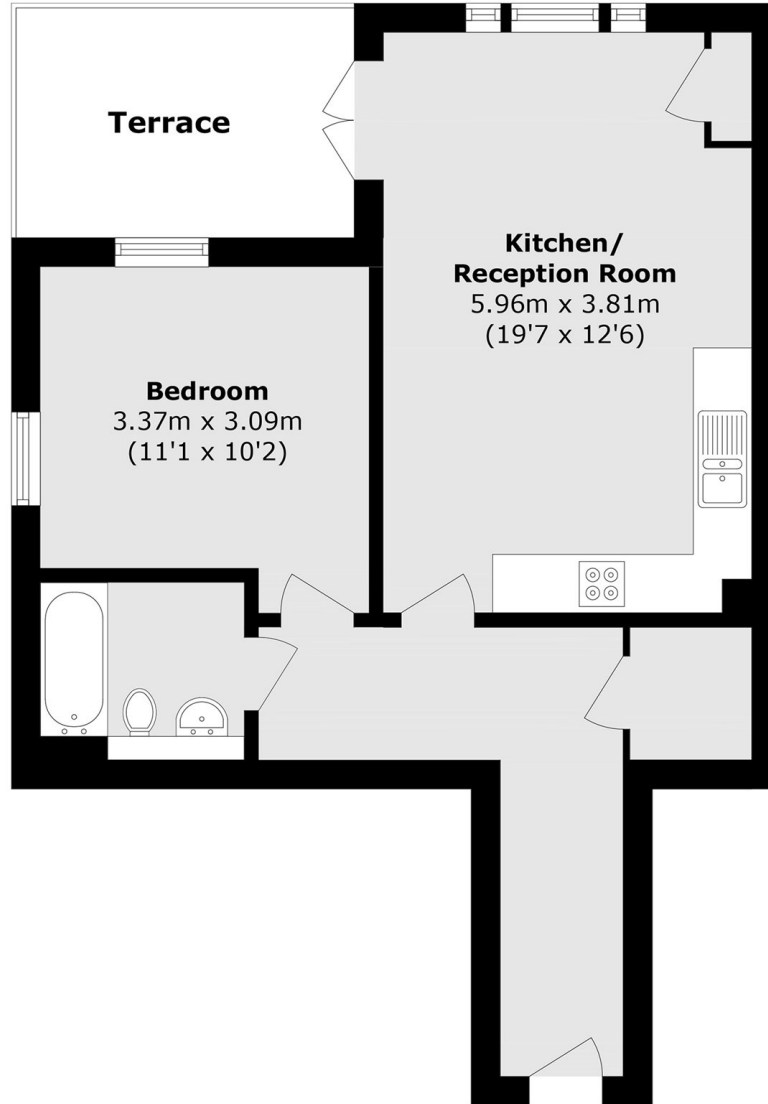
ABOUT THE HOME

A beautiful one bedroom apartment in an impressive gated development in central Balham. This terrific property is immaculately presented, with an open plan kitchen living area, a generous bedroom, and a private terrace. It also benefits from having inbuilt storage, and a separate bike store.

Bowling Green Square is ideally located in the Nightingale Triangle and is within easy reach of the plethora of shops, bars and restaurants Balham and Wandsworth Common have to offer. The green open spaces of Wandsworth Common are close by, as are the excellent transport links, including Balham mainline and underground stations.







Total area (approx.): 50.1 sq. m (539.3 sq. ft)

Terrace area (approx.): 12.8 sq. m (137.8 sq. ft)

JACKSONS BALHAM

8-11 Balham Station Road,
London, SW12 9SG
Sales: 020 8675 6555
Lettings: 020 8675 6565

Energy Rating: We aim to make our particulars both accurate and reliable. However they are not guaranteed; nor do they form part of an offer or contract. If you require clarification on any points then please contact us, especially if you're traveling some distance to view. Please note that appliances and heating systems have not been tested and therefore no warranties can be given as to their good working order.