



High Street, TW13

£1,575 Per calendar month

This one double bedroom apartment finished to a high standard throughout with an open plan kitchen reception room and breathtaking views of London's skyline.

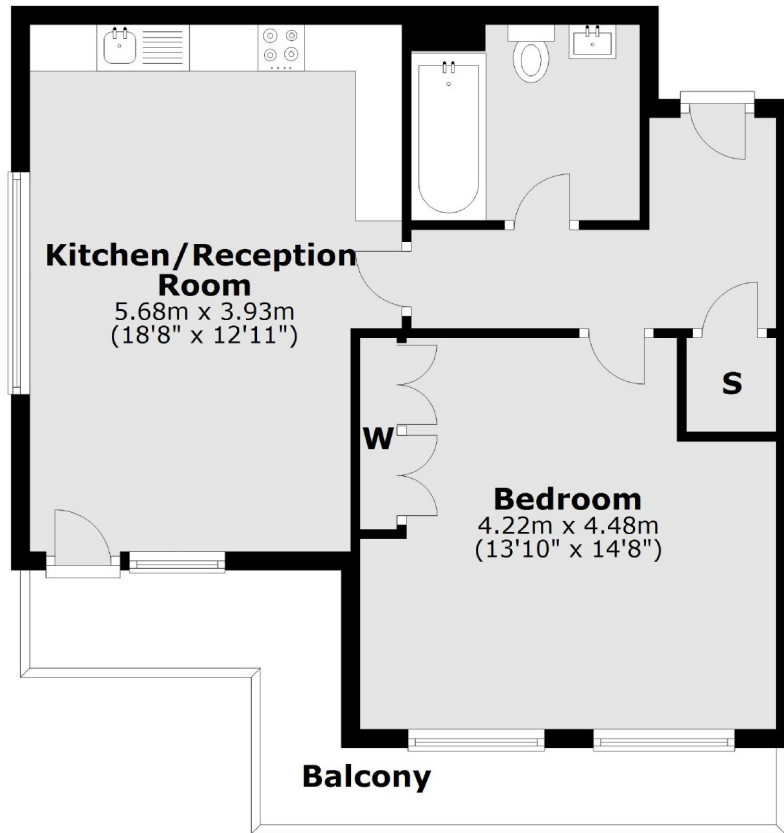
Located in the heart of Feltham High Street and within easy reach of Feltham mainline train station with its fast link train service into London Waterloo.

Features

- Incredible Views
- Private Balcony
- Modern Bathroom
- Contemporary Kitchen
- Lift
- Great Location

High Street,
Feltham, TW13

Fifth Floor



Total area: approx. 52.7 sq. metres (567.6 sq. feet)