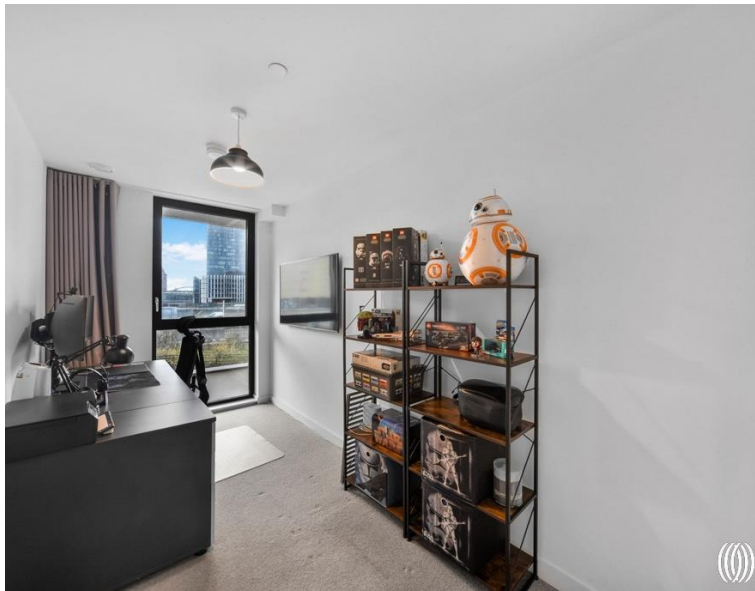


**Forrester Way, London E15**  
£850,000 Leasehold







## Description

Located in Stratford's popular New Garden Quarter, this three-bedroom duplex apartment at Hawthorn House combines contemporary design with everyday functionality. With 24-hour concierge, landscaped communal gardens, and a residents' gym, the building provides the kind of amenities that make daily life easier and more enjoyable for modern homeowners.

Spanning approximately 1,167 square feet across two floors, the apartment's standout feature is its generous north-facing private terrace, measuring approximately 25 feet by 22 feet. This substantial outdoor space provides an exceptional setting for year-round entertaining and relaxation, offering a rare luxury in central London living. The accommodation comprises three well-proportioned double bedrooms, two contemporary bathrooms including an en-suite to the master, and a guest WC for added convenience. Residents benefit from exclusive access to a fully-equipped gym and the peace of mind that comes with a private underground parking space.

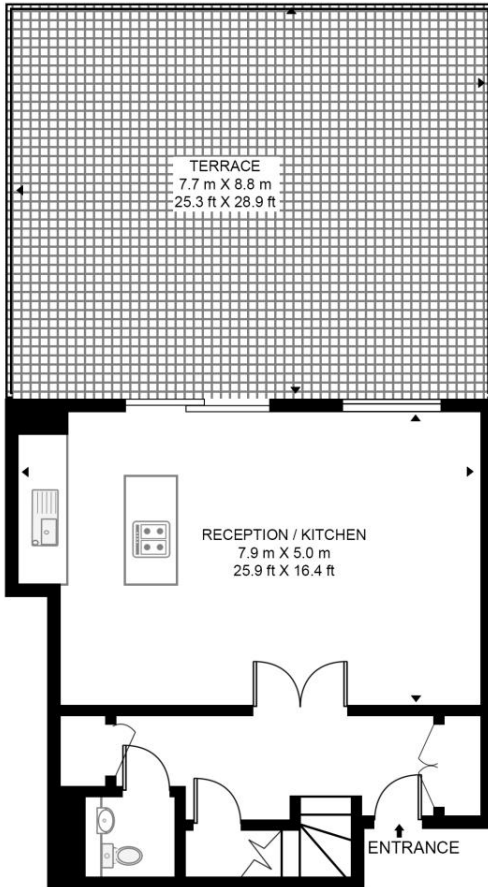
- Expansive north-facing terrace
- Three double bedrooms
- Two luxury bathrooms
- Residents' gym facility
- 24-hour concierge service
- Private underground parking
- Landscaped communal gardens
- Guest WC convenience
- Near Westfield Stratford
- Queen Elizabeth Olympic Park

# Floorplan

1,167 sq ft | 108 sq m

## HAWTHORN HOUSE, NEW GARDEN QUARTER

APPROXIMATE GROSS INTERNAL FLOOR AREA 1167 SQ.FT (108.5 SQ.M)



FIRST FLOOR



SECOND FLOOR



This floor plan has been defined by the RICS Code of Measurement. This floor plan and all others are for approximate representative purposes only and upon usage is agreed to as such by the client.

WWW: [hdvirtualart.com](http://hdvirtualart.com) | TEL: 0203.974.1567 | EMAIL: [info@hdvirtualart.com](mailto:info@hdvirtualart.com)

Stratford  
5 Station Street,  
London E15 1DA  
+4420 3147 1500  
[Lettingsstratford@eu.jll.com](mailto:Lettingsstratford@eu.jll.com)

*Urban living, your way.*

[jll.co.uk/residential](http://jll.co.uk/residential)

© 2019 Jones Lang LaSalle IP, Inc. All rights reserved. All information contained herein is from sources deemed reliable; however, no representation or warranty is made to the accuracy thereof.

