



**Price**  
**£290,000**

**Freehold**

2x  1x  1x 

**Cowley Drive,  
Woodingdean, Brighton,  
East Sussex, BN2**

**OVER 60?**

Secure this property  
for up to **59% less!**

**cubitt & west**  
Helping you move forwards



## Main features

- Bright & spacious home
- Large lounge
- Kitchen with separate dining area
- Front & rear gardens
- No onward chain

## Accommodation

### GROUND FLOOR

Porch

Lounge: 17'0 x 10'5 (5.19m x 3.18m)

Kitchen: 14'11 x 13'7 at widest point  
(4.55m x 4.14m)

### FIRST FLOOR

Landing

Bedroom 1: 15'0 x 9'3 (4.58m x 2.82m)

Bedroom 2: 10'8 x 9'9 (3.25m x 2.97m)

Wet Room

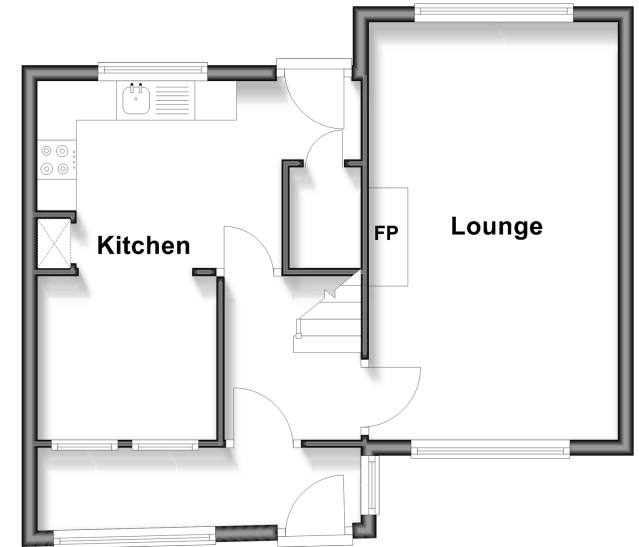
### OUTSIDE

Front and Rear Garden

On Street Parking

## Ground Floor

Approx. 40.9 sq. metres (440.3 sq. feet)



## First Floor

Approx. 34.4 sq. metres (370.3 sq. feet)



Call Woodingdean - 01273 606121 ■ [cubittandwest.co.uk](http://cubittandwest.co.uk)

- Legal advice should be taken to verify fixtures/fittings, planning, alterations and/or lease details
- Appliances & services are untested, dimensions are approximate and floor plans are not to scale
- Through a Homewise Home For Life Plan people aged 60+ can secure this property for up to 59% less, by purchasing a Lifetime Lease



32508138/20260108/DS/JON