



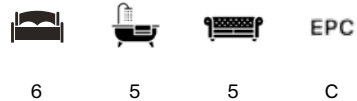
WILLINGTON MANOR

West Kingsdown, TN15



DETACHED COUNTRY HOUSE IN EXCLUSIVE PRIVATE ESTATE

An impressive six-bedroom detached country house, within 2.5 acres of beautifully landscaped gardens, forming part of an exclusive 17-acre private estate within an Area of Outstanding Natural Beauty.



Local Authority: Sevenoaks District Council

Council Tax band: H

Tenure: Freehold



THE PROPERTY

Willington Manor is an elegant interpretation of Edwardian architecture with generous proportions, tall ceilings and large double-glazed sash windows throughout, framing delightful views over the gardens and far-reaching views beyond. Lovingly maintained by the current owners since new, the house offers immaculately presented accommodation of over 6,370 sq ft across three floors.

The welcoming reception hall features oak flooring and a fine central staircase. The ground floor offers a versatile range of reception rooms including an elegant drawing room with French doors opening directly onto the rear terrace, alongside an attractive stone fireplace with gas fire. The dining room provides a formal setting and benefits from a dedicated walk-in wine store. A study, cloakroom, utility room, and an additional sitting room further enhance the ground floor accommodation.











The kitchen/breakfast room is fitted with contemporary white gloss cabinetry, black granite work surfaces and integrated appliances. It offers excellent potential to enlarge or combine with adjoining reception rooms if desired. The kitchen flows seamlessly into a stunning hexagonal garden room, creating an informal sitting and dining space with views across the gardens. The principal bedroom suite is particularly impressive, featuring a large bay window with far-reaching views extending as far as London, along with a fitted dressing room and spacious en-suite bathroom. There are four further bedrooms on the first floor, three with en-suites, while another includes a walk-in dressing room. The second floor offers two substantial rooms served by a Jack and Jill bathroom.

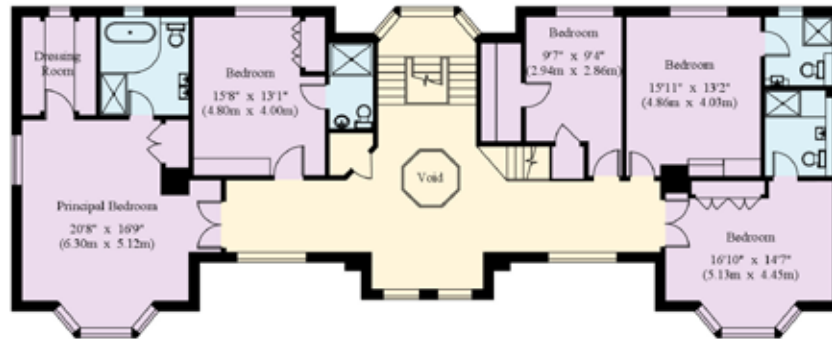


The gardens have been beautifully landscaped with a large lawn complemented by mature trees, well-stocked herbaceous borders and colourful shrubs. A stone terrace spans the rear of the house, providing an ideal setting for outdoor entertaining. The wider private estate extends to approximately 17 acres and is accessed via electrically operated gates with the property further secured by its own gated driveway leading to a detached triple garage.

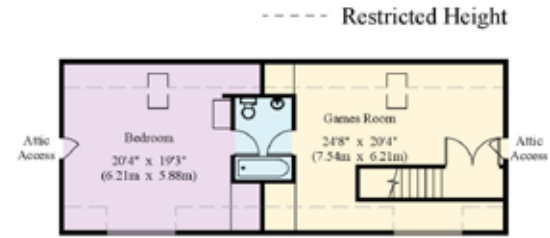


Willington Manor

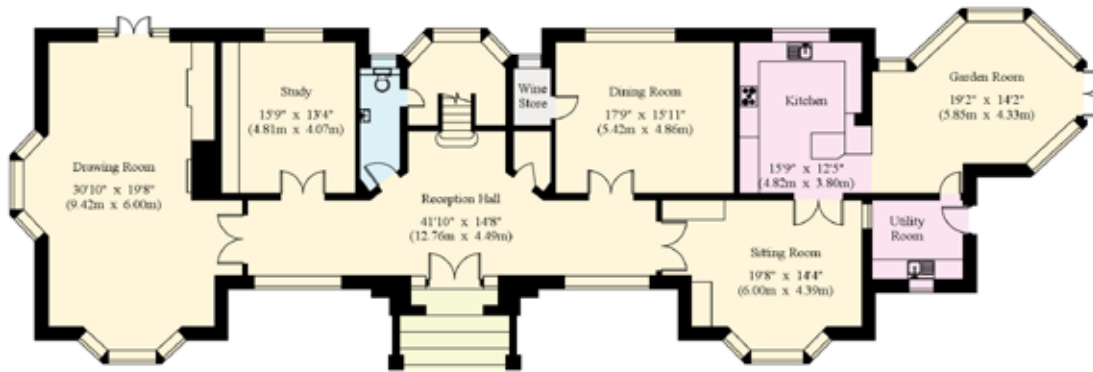
House - Gross Internal Area : 592.0 sq.m (6372 sq.ft.)
 Garage - Gross Internal Area : 48.2 sq.m (518 sq.ft.)



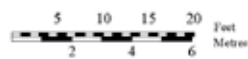
First Floor



Second Floor



Ground Floor



© 28/05/26 Trueplan (UK) Ltd. 01892 614 881

This plan is for guidance only and must not be relied upon as a statement of fact. Attention is drawn to the Important Notice on the last page of the text of the Particulars.

Approximate Gross Internal Area = 592.0 sq m / 6372 sq ft

This plan is for layout guidance only. Not drawn to scale unless stated. Windows and door openings are approximate. Whilst every care is taken in the preparation of this plan, please check all dimensions, shapes and compass bearings before making any decisions reliant upon them. (ID767266)



Matthew Hodder-Williams

01732 744460

matthew.hodder-williams@knightfrank.com

Knight Frank Sevenoaks

113-117 High Street, Sevenoaks, Kent

TN13 1UP

knightfrank.co.uk

Your partners in property

1. Particulars: These particulars are not an offer or contract, nor part of one. You should not rely on statements given by Knight Frank in the particulars, by word of mouth or in writing ("information") as being factually accurate about the property, its condition or its value. Neither Knight Frank nor any joint agent has any authority to make any representations about the property, and accordingly any information given is entirely without responsibility on the part of Knight Frank. 2. Material Information: Please note that the material information is provided to Knight Frank by third parties and is provided here as a guide only. While Knight Frank has taken steps to verify this information, we advise you to confirm the details of any such material information prior to any offer being submitted. If we are informed of changes to this information by the seller or another third party, we will use reasonable endeavours to update this as soon as practical. 3. Photos, Videos etc: The photographs, property videos and virtual viewings etc. show only certain parts of the property as they appeared at the time they were taken. Areas, measurements and distances given are approximate only. 4. Regulations etc: Any reference to alterations to, or use of, any part of the property does not mean that any necessary planning, building regulations or other consent has been obtained. A buyer must find out by inspection or in other ways that these matters have been properly dealt with and that all information is correct. 5. Fixtures and fittings: A list of the fitted carpets, curtains, light fittings and other items fixed to the property which are included in the sale (or may be available by separate negotiation) will be provided by the Seller's Solicitors. 6. VAT: The VAT position relating to the property may change without notice. 7. To find out how we process Personal Data, please refer to our Group Privacy Statement and other notices at <https://www.knightfrank.com/legals/privacy-statement>.

Particulars dated June 26. Photographs and videos dated June 25. All information is correct at the time of going to print. Knight Frank is the trading name of Knight Frank LLP. Knight Frank LLP is a limited liability partnership registered in England and Wales with registered number OC305934. Our registered office is at 55 Baker Street, London W1U 8AN. We use the term 'partner' to refer to a member of Knight Frank LLP or an employee or consultant. A list of members names of Knight Frank LLP may be inspected at our registered office. If you do not want us to contact you further about our services then please contact us by either calling 020 3544 0692, email to marketing.help@knightfrank.com or post to our UK Residential Marketing Manager at our registered office (above) providing your name and address.

