



Price
£399,995

Freehold

3x  2x  1x 

**Chapman Close,
Snodland, Kent, ME6**

Wards
Helping you move forwards



Main features

- Beautifully presented family home on Holborough Lakes
- Spacious kitchen/diner - the perfect place to entertain family and friends
- Ideal for family life with a bathroom, en-suite shower room and cloakroom
- Handy allocated parking for 2 cars right outside your front door
- Great transport links and the bonus of a onsite gym, nursery and lakeside walks

Accommodation

GROUND FLOOR

Entrance Hall
Cloakroom
Lounge: 18'2 x 10'2 (5.54m x 3.10m)
Kitchen/Diner: 19'10 x 18'1 (6.05m x 5.52m)

FIRST FLOOR

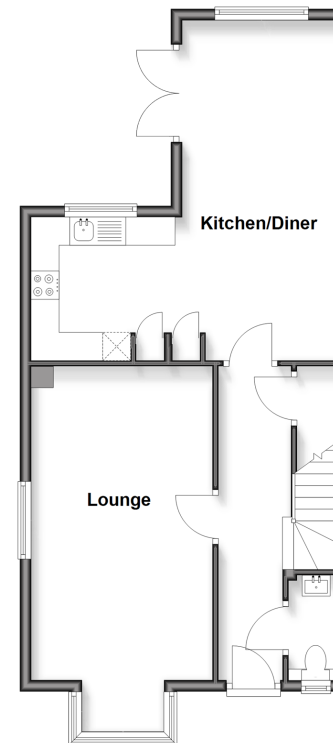
Landing
Bedroom 1: 10'5 x 9'8 (3.18m x 2.95m)
En-Suite Shower Room
Bedroom 2: 10'10 x 8'5 (3.30m x 2.57m)
Bedroom 3: 8'6 x 6'10 (2.59m x 2.08m)
Bathroom: 7'2 x 5'10 (2.19m x 1.78m)

OUTSIDE

Rear Garden
Allocated Parking x 2

Ground Floor

Approx. 55.8 sq. metres (600.5 sq. feet)



First Floor

Approx. 45.0 sq. metres (484.5 sq. feet)

