



Guide Price
£350,000

Freehold

3x  1x  1x 

**Grier Close, Ifield,
Crawley, West Sussex,
RH11**

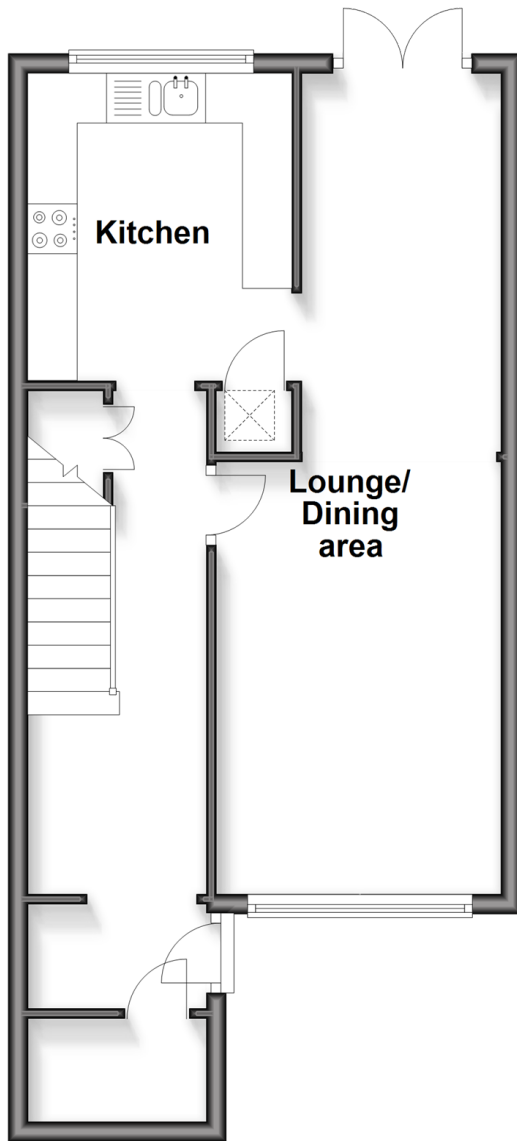
OVER 60?

Secure this property
for up to **59% less!**

cubitt & west
Helping you move forwards

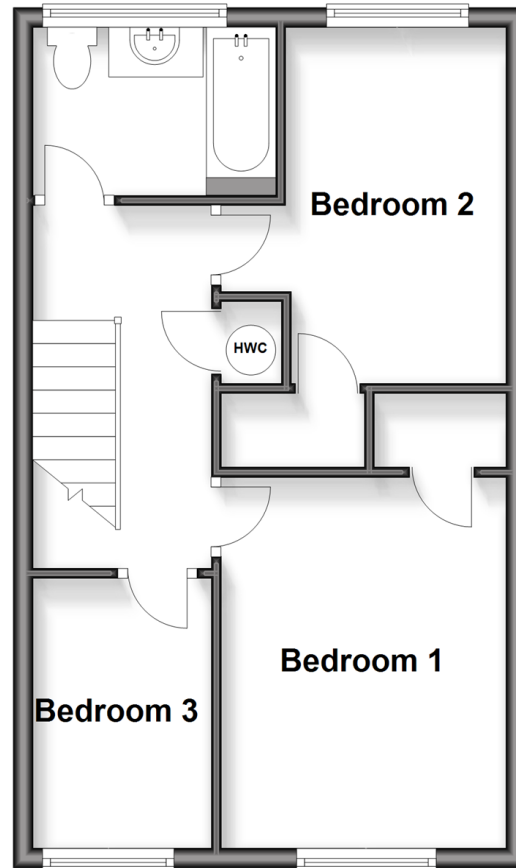
Ground Floor

Approx. 43.5 sq. metres (468.0 sq. feet)



First Floor

Approx. 39.4 sq. metres (423.8 sq. feet)



Accommodation

GROUND FLOOR

Entrance Porch

Entrance Hall

Lounge/Dining Area: 26'5 (8.06m) x 9'5 (2.87m) narrowing to 6'8 (2.03m)

Kitchen: 10'2 x 8'7 (3.10m x 2.62m)

FIRST FLOOR

Landing

Bedroom 1: 12'2 x 9'4 (3.71m x 2.85m)

Bedroom 2: 12'11 x 7'2 (3.94m x 2.19m)

Bedroom 3: 9'3 x 6'2 (2.82m x 1.88m)

Bathroom: 8'2 x 6'0 (2.49m x 1.83m)

OUTSIDE

Front Garden

Rear Garden



Main features

- No upper chain
- Mid terraced house
- Quiet cul de sac location
- Large through lounge/diner and a re-fitted kitchen with integrated appliances
- Short walk to local shops, schools and Ifield Railway Station



Nearest Schools

Primary Schools: Mill Primary, The 0.9 miles, St Margaret's CofE Primary 1.6 miles, Broadfield East Junior School 1.6 miles

Secondary Schools: Manor Green College 1.4 miles



Transport Information

Train Stations: Ifield 0.9 miles, Crawley 3.1 miles, Three Bridges 4.1 miles



Address

Grier Close, Ifield, Crawley, West Sussex, RH11



Directions

For directions to this property please contact us.



cubitt&west
Helping you move forwards

Call Crawley Branch 01293 522233 ■ cubittandwest.co.uk



- Legal advice should be taken to verify fixtures/fittings, planning, alterations and/or lease details
- Appliances & services are untested, dimensions are approximate and floor plans are not to scale
- Through a Homewise Home For Life Plan people aged 60+ can secure this property for up to 59% less, by purchasing a Lifetime Lease



20419080/20260124/SS/DC