



Upper Cottage Flat

Front Facing Lounge

Modern Fitted Kitchen

Three Bedrooms

Lennox Drive, Clydebank, G81 5JY

EVE Property are delighted to present to the market this spacious Three Bedroom Upper Cottage Flat in popular Clydebank/Fairley Area. This spacious upper cottage flat is ideally located within walking distance of a wide range of local amenities, schools and excellent public transport links.



## Property Description

Entered via a private front door with staircase leading to the upper level accommodation, the property offers bright and well-proportioned apartments throughout. A welcoming front-facing lounge provides excellent natural light. Modern kitchen is fitted with a generous selection of floor and wall mounted units, offering ample storage and workspace as well as a breakfast bar with two stools.

There are three generously sized bedrooms, offering flexible living arrangements. Completing the accommodation is a modern shower room comprising WC, wash hand basin and shower cubicle.

The property has the added advantage of private garden ground to the rear

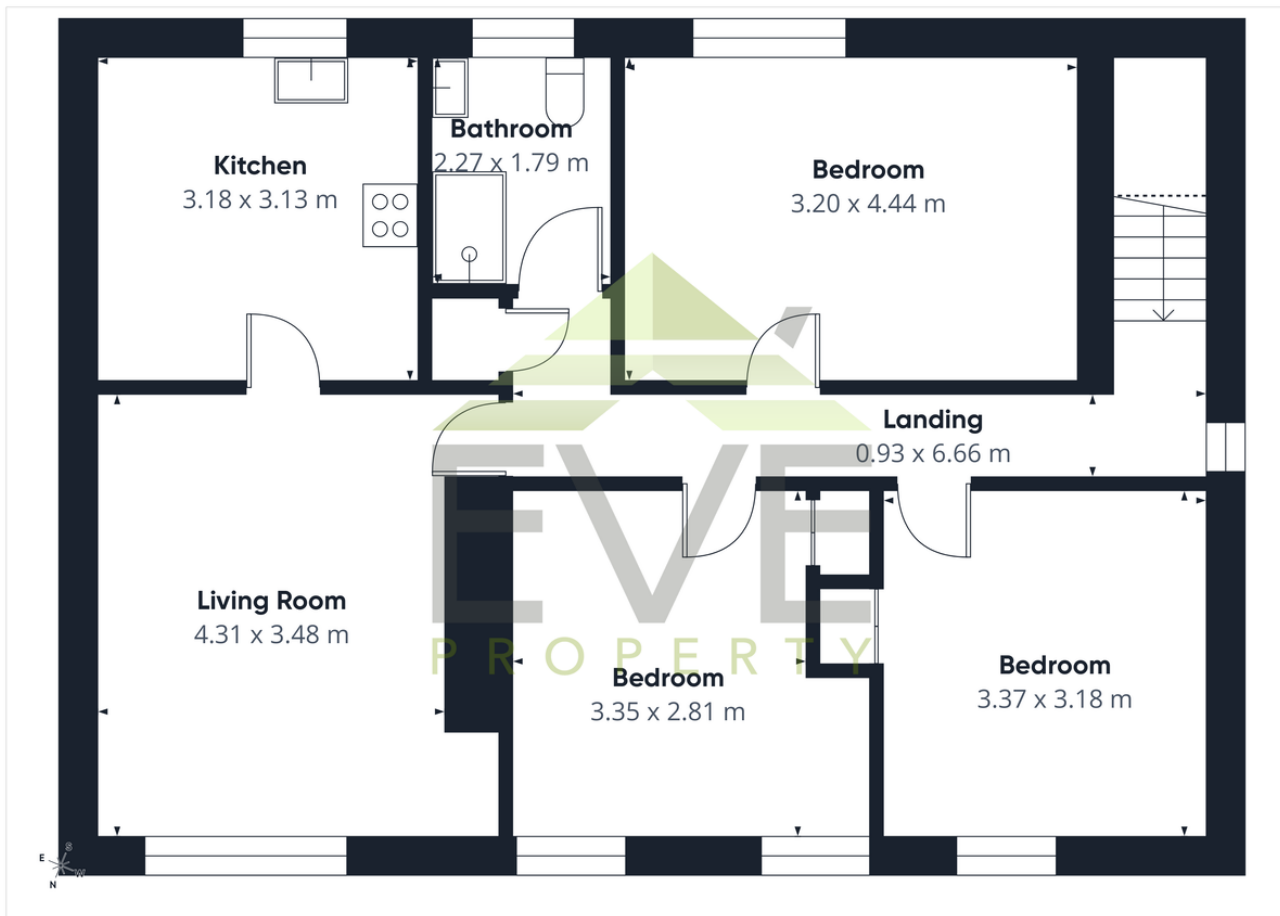
The property is decorated in modern neutral shades complimented by carpeting and flooring. Further benefits include double glazing, gas central heating.

Ideally situated within a short distance of sought after schooling, this property will appeal to variety of purchasers, including families with children of various ages. Also, within walking distance of amenities, bars and restaurants at the popular Hardgate Cross. Excellent transport links are available from here to local shopping centres, or further afield to Glasgow City, Loch Lomond area etc.

Early viewing is highly recommended to appreciate the accommodation on offer and convenient location.







1 Herschell Street, Anniesland,  
Glasgow, Lanarkshire, G13 1HR

[www.eve-property.co.uk](http://www.eve-property.co.uk)  
0141 255 0020  
[hello@eve-property.co.uk](mailto:hello@eve-property.co.uk)

Agents Note: Whilst every care has been taken to prepare these particulars, they are for guidance purposes only. All measurements are approximate are for general guidance purposes only and whilst every care has been taken to ensure their accuracy, they should not be relied upon and potential buyers/tenants are advised to recheck the measurements