



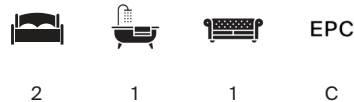
GLEDHOW GARDENS

London, SW5



BRIGHT, TWO BEDROOM APARTMENT

A generously proportioned home offering elegant living space, two bedrooms and excellent natural light. This apartment further benefits from access to the prestigious and award-winning Gledhow Gardens.



Local Authority: Royal Borough of Kensington and Chelsea

Council Tax band: G

Tenure: Share of freehold plus leasehold with approximately 976 years remaining

Ground rent: Peppercorn

Service charge: Approximately £4,950 per annum (Including sinking fund), reviewed every year

Guide price: £1,315,000

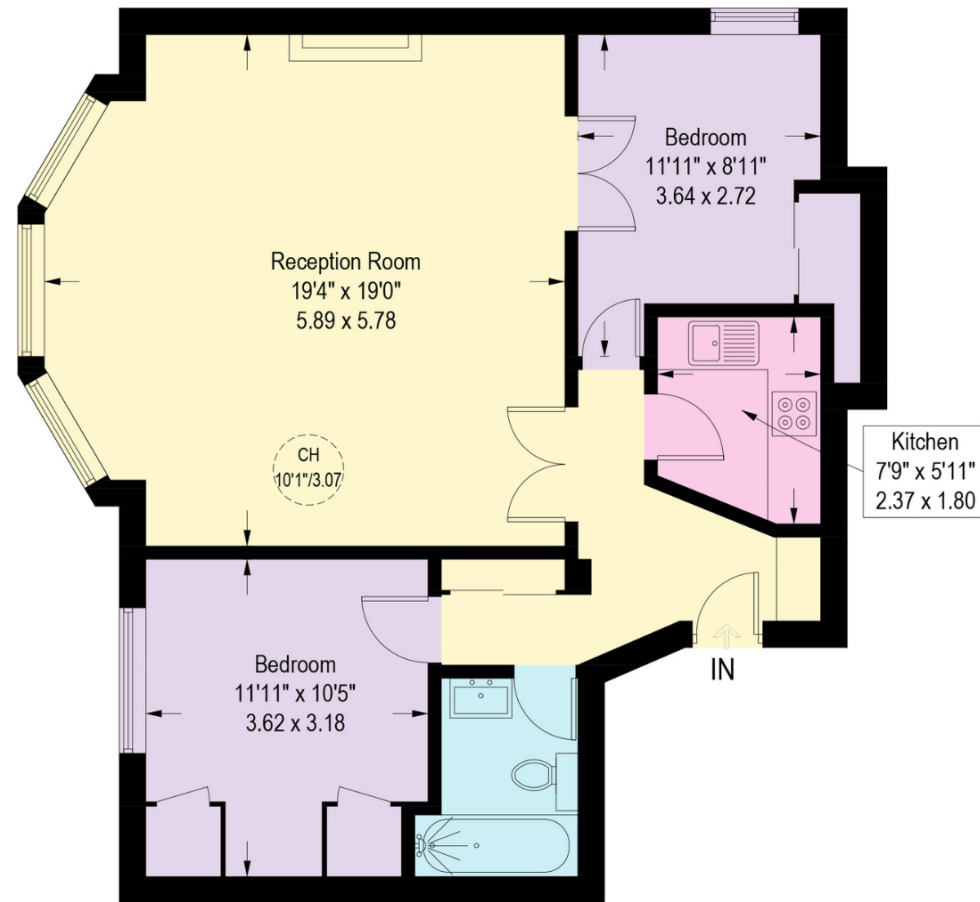


GLEDHOW GARDENS, SW5

Positioned on the second floor, this well-balanced apartment is centered around an impressive reception room, where a wide bay window draws in natural light and creates a strong sense of space. A ceiling height of approximately 3.0m further enhances the room's volume, making it an inviting setting for both everyday living and entertaining. The kitchen sits just off the reception space, neatly arranged and practical, allowing for ease of use while remaining visually separate from the main living area. The accommodation comprises two bedrooms, both with built-in wardrobes. A well-appointed bathroom is conveniently arranged off the hallway, completing a layout that feels both comfortable and straightforward to live in. This serene apartment, with its wide bay windows, feels like an extension of the luscious, award-winning garden, which is radiant in color throughout the seasons. This apartment further benefits from being located in a well-managed building.







Second Floor

Gledhow Gardens, SW5
Approximate Gross Internal Area = 70.4 sq m / 758 sq ft

This plan is for layout guidance only. Not drawn to scale unless stated. Windows and door openings are approximate. Whilst every care is taken in the preparation of this plan, please check all dimensions, shapes and compass bearings before making any decisions reliant upon them. (ID767266)

Claire Mengham

020 3978 2462

claire.mengham@knightfrank.com

Knight Frank Chelsea and South Kensington

352a Kings Road

SW3 5UU

knightfrank.co.uk

Your partners in property

1. Particulars: These particulars are not an offer or contract, nor part of one. You should not rely on statements given by Knight Frank in the particulars, by word of mouth or in writing ("information") as being factually accurate about the property, its condition or its value. Neither Knight Frank nor any joint agent has any authority to make any representations about the property, and accordingly any information given is entirely without responsibility on the part of Knight Frank. 2. Material Information: Please note that the material information is provided to Knight Frank by third parties and is provided here as a guide only. While Knight Frank has taken steps to verify this information, we advise you to confirm the details of any such material information prior to any offer being submitted. If we are informed of changes to this information by the seller or another third party, we will use reasonable endeavours to update this as soon as practical. 3. Photos, Videos etc: The photographs, property videos and virtual viewings etc. show only certain parts of the property as they appeared at the time they were taken. Areas, measurements and distances given are approximate only. 4. Regulations etc: Any reference to alterations to, or use of, any part of the property does not mean that any necessary planning, building regulations or other consent has been obtained. A buyer must find out by inspection or in other ways that these matters have been properly dealt with and that all information is correct. 5. Fixtures and fittings: A list of the fitted carpets, curtains, light fittings and other items fixed to the property which are included in the sale (or may be available by separate negotiation) will be provided by the Seller's Solicitors. 6. VAT: The VAT position relating to the property may change without notice. 7. To find out how we process Personal Data, please refer to our Group Privacy Statement and other notices at <https://www.knightfrank.com/legals/privacy-statement>.

Particulars dated April 2026. Photographs and videos dated April 2026. All information is correct at the time of going to print. Knight Frank is the trading name of Knight Frank LLP. Knight Frank LLP is a limited liability partnership registered in England and Wales with registered number OC305934. Our registered office is at 55 Baker Street, London W1U 8AN. We use the term 'partner' to refer to a member of Knight Frank LLP, or an employee or consultant. A list of members names of Knight Frank LLP may be inspected at our registered office. If you do not want us to contact you further about our services then please contact us by either calling 020 3544 0692, email to marketing.help@knightfrank.com or post to our UK Residential Marketing Manager at our registered office (above) providing your name and address.