



## Osidge Lane, N14

£3,400 Per calendar month

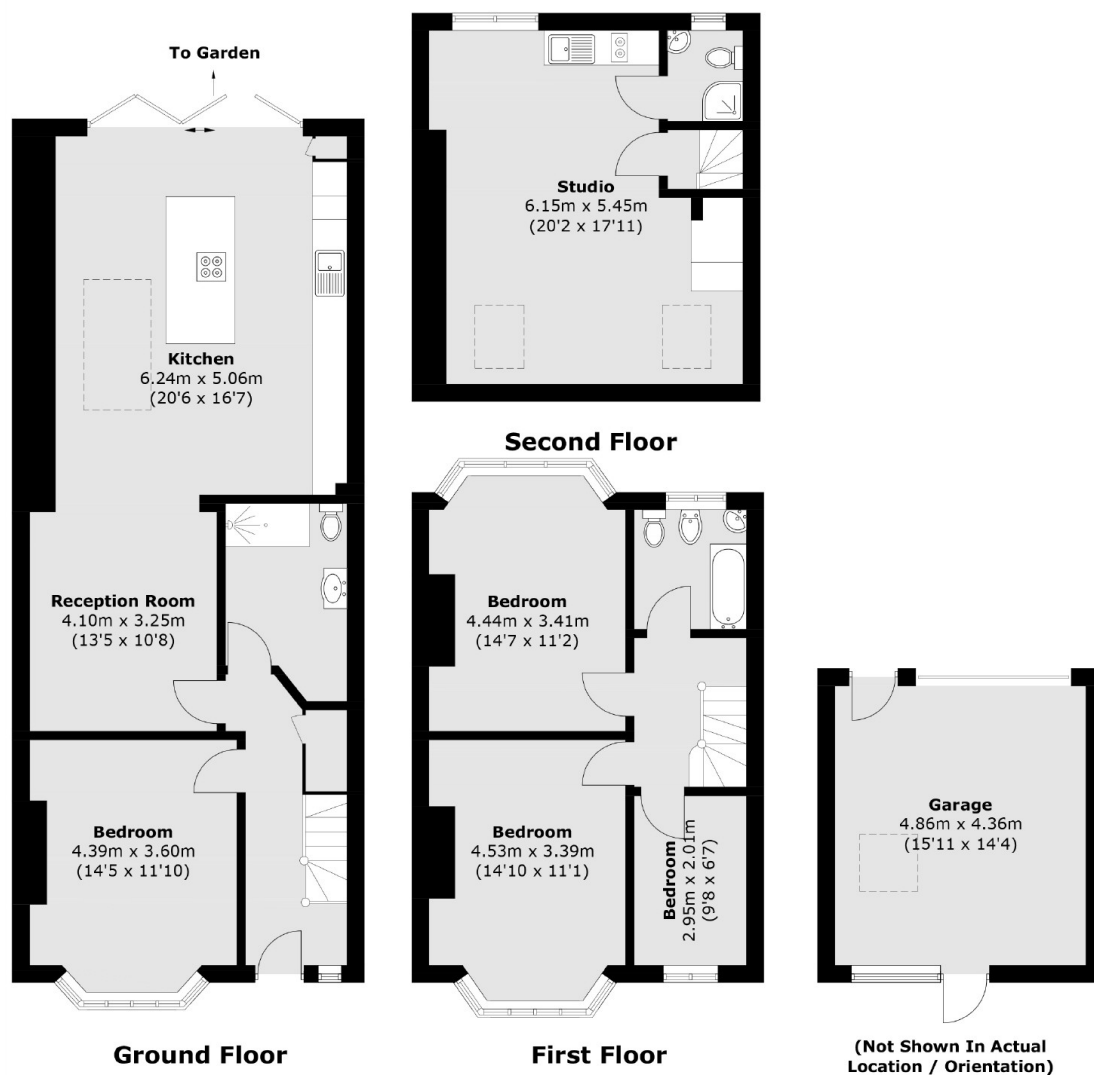
This property comprises of having 5 bedrooms, 2 large living areas, a recently installed fully fitted modern kitchen in a large rear extension which leads to a beautiful garden with a pond, three bathrooms and the loft has been converted to a self contained studio. Off street parking for 1 car, gas central heating, double glazing and much more!

Perfect location for families with local Ofsted rated schools such as Brunswick and Monkfrith primary schools, nurseries and closest station is Southgate.

### Features

- 5 Bedroom house
- 3 Bathrooms
- 2 Reception rooms
- Stunning modern fitted kitchen
- Studio apartment in loft
- Off street parking for 1 car

# Osidge Lane, London, N14



Total area (approx.) : 157.9 sq. m (1,699.7 sq. ft)  
Garage : 21.4 sq. m (230.3 sq. ft)