

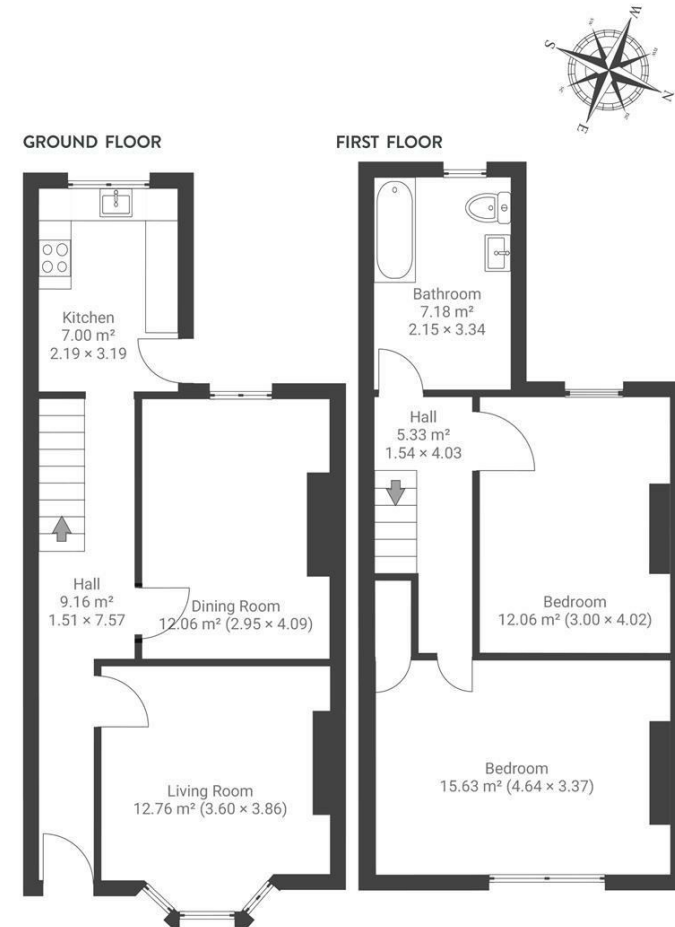
Boardwalk

# Carlton Park

, BRISTOL

## Carlton Park REDFIELD

APPROXIMATE FLOOR AREA  
85 SQM / 914 SQFT



Boardwalk

# Carlton Park , BRISTOL

£

£350,000

zZz

2 Bedrooms



BS5 9DA



1 Bathrooms

*"I love the SW-facing open aspect garden for after work drinks & relaxing; it's got everything - privacy, sun, shade, shelter and tranquillity. There is no noisy road or rail nearby but it's just a few minutes walk to the Bristol/Bath cycle path and several good bus and rail links so it's easy to get into town or out to the countryside. Of course Church Road and Easton are known for their great variety of shops, restaurants, pubs, etc. but for me it's the range of amazing breweries within walking distance that I'll miss the most, genuinely among the best in the country!"*

