



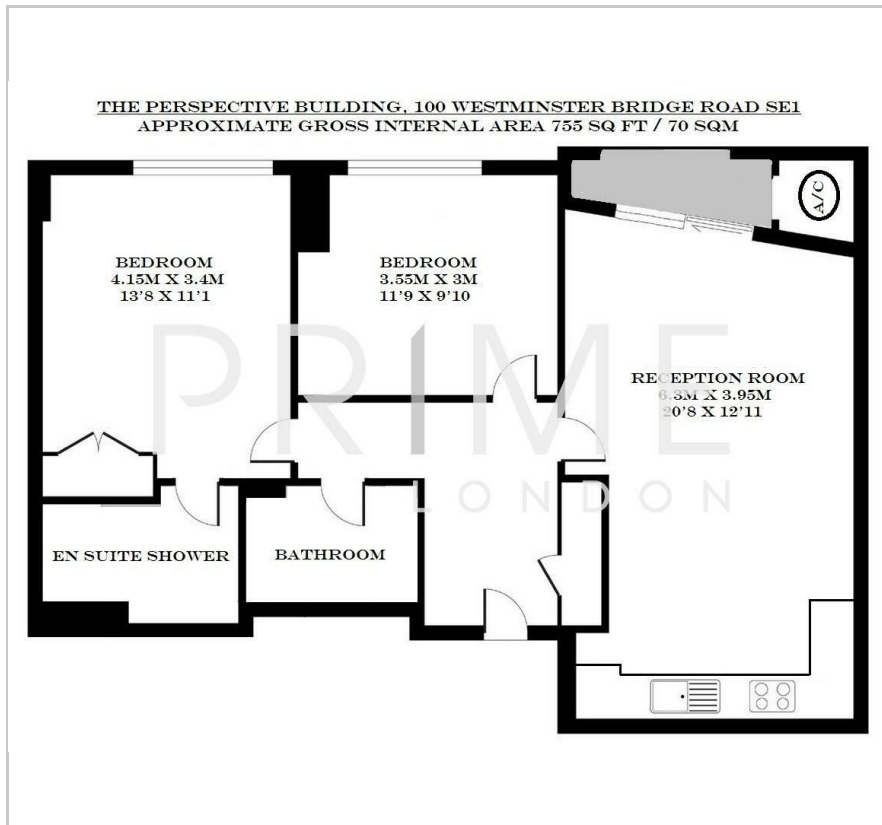
The Perspective Building

100 Westminster Bridge Road, Waterloo, SE1 7XA

Offers Over £600,000



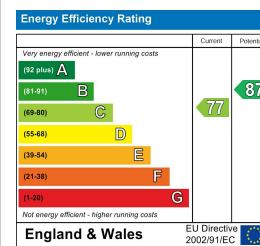
Floor Plan



Area Map



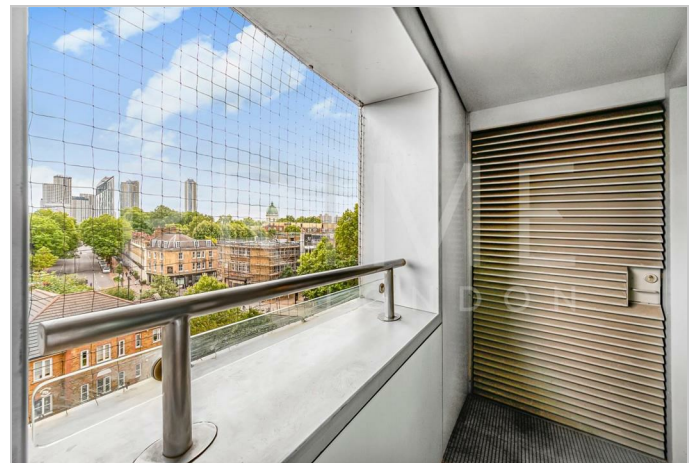
Energy Efficiency Graph



Viewing

By appointment. Contact us on 0207 928 6663 if you wish to arrange a viewing appointment for this property, or require further information.

- 755 sq ft (70 sqm)
- Designated, secure parking space
- Comfort cooling
- 24 hour uniformed concierge service
- Within a short walk of the South Bank
- Directly adjacent to Lambeth North Underground



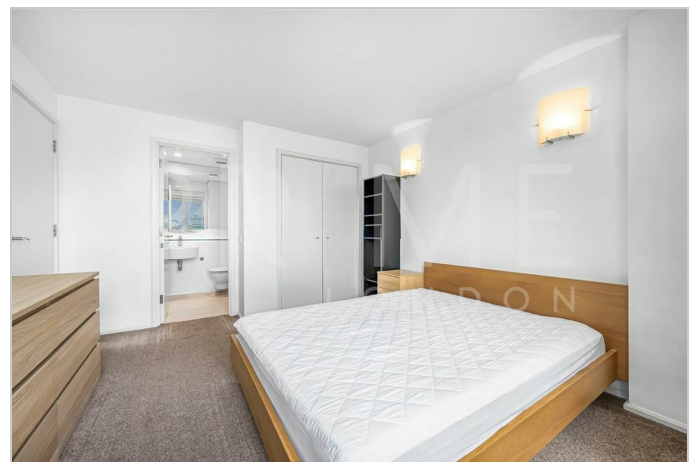
Investment sale. This south facing two bedroom two bathroom apartment, measuring 755 sq ft (70 sqm), is offered chain-free and with secure parking through Prime London.

The property features a generous reception room with an open-plan kitchen and dining area, two double bedrooms with ample storage (the principal bedroom benefiting from an en suite), a separate guest bathroom, comfort cooling, and a private balcony.

Situated in The Perspective Building, a recently refurbished and well-maintained landmark development, residents enjoy the convenience of a 24 hour concierge, a communal garden, secure bike storage, and a welcoming community atmosphere.

The location is outstanding, with Lambeth North Underground Station on the doorstep and Waterloo Station just moments away, providing excellent transport links across London. The vibrant South Bank and West End, with their array of cultural, dining, and leisure options, are within easy walking distance.

This is a fantastic opportunity to acquire a modern, well-appointed home in an enviable location.



These particulars, whilst believed to be accurate are set out as a general outline only for guidance and do not constitute any part of an offer or contract. Intending purchasers should not rely on them as statements of representation of fact, but must satisfy themselves by inspection or otherwise as to their accuracy. No person in this firm's employment has the authority to make or give any representation or warranty in respect of the property.