



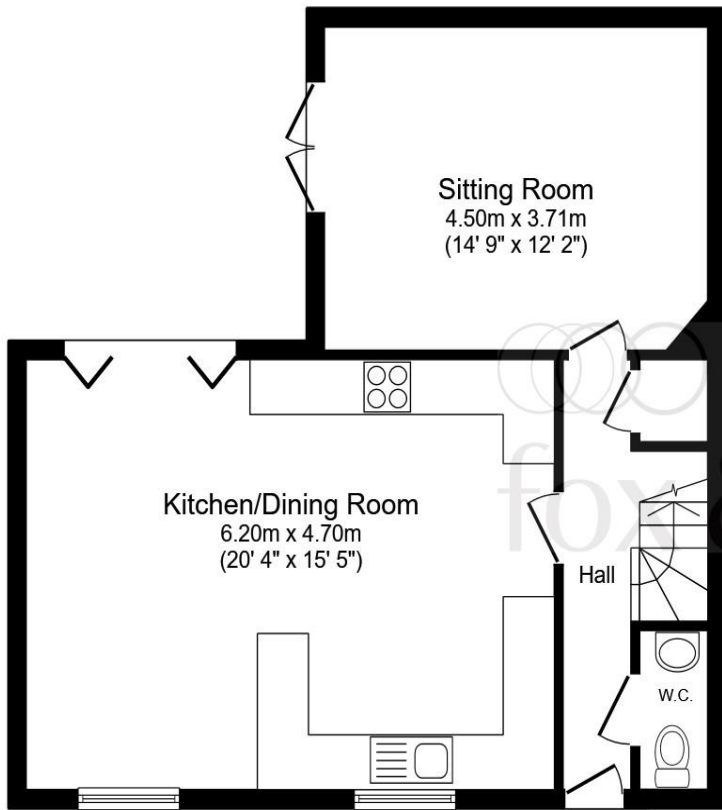
Home Farm, Embley Lane, East Wellow, Romsey, SO51 6DN

welcome to

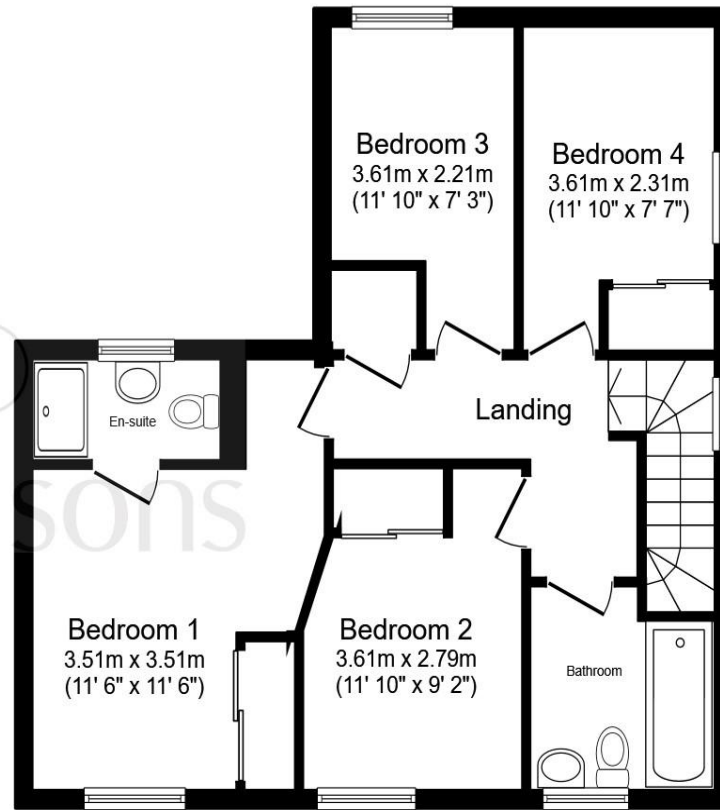
Home Farm, Embley Lane, East Wellow, Romsey

Contemporary Rural Luxury Living! High specification BRAND NEW 4 BED house in the delightful location of East Wellow. Large OPEN PLAN living space, LUXURY fitted kitchen, contemporary bathroom & EN-SUITE and AIR SOURCED HEAT PUMP. Call to view TODAY!





Ground Floor



First Floor

This floor plan is for illustrative purposes only. It is not drawn to scale. Any measurements, floor areas (including any total floor area), openings and orientation are approximate. No details are guaranteed, they cannot be relied upon for any purpose and they do not form part of any agreement. No liability is taken for any error, omission or misstatement. A party must rely upon its own inspection(s). Powered by www.focalagent.com

welcome to

Home Farm, Embley Lane, East Wellow, Romsey

- Four Bedroom Detached House
- Beautiful open plan fitted kitchens/diners, all with built in appliances
- Energy saving air source heat pump.
- Four spacious bedrooms with En-suite of master which benefits from Porcelanosa tiling.
- 10 Year New Home Warranty.

Tenure: Freehold EPC Rating: Exempt

offers in excess of

£599,995



Please note the marker reflects the postcode not the actual property

view this property online fox-and-sons.co.uk/Property/RMY105575



Property Ref:
RMY105575 - 0003

1. MONEY LAUNDERING REGULATIONS Intending purchasers will be asked to produce identification documentation at a later stage and we would ask for your co-operation in order that there is no delay in agreeing the sale. 2. These particulars do not constitute part or all of an offer or contract. 3. The measurements indicated are supplied for guidance only and as such must be considered incorrect. Potential buyers are advised to recheck measurements before committing to any expense. 4. We have not tested any apparatus, equipment, fixtures or services and it is in the buyers interest to check the working condition of any appliances. 5. Where an EPC, or a Home Report (Scotland only) is held for this property, it is available for inspection at the branch by appointment. If you require a printed version of a Home Report, you will need to pay a reasonable production charge reflecting printing and other costs. 6. We are not able to offer an opinion either written or verbal on the content of these reports and this must be obtained from your legal representative. 7. Whilst we take care in preparing these reports, a buyer should ensure that his/her legal representative confirms as soon as possible all matters relating to title including the extent and boundaries of the property and other important matters before exchange of contracts.

Fox & Sons is a trading name of Sequence (UK) Limited which is registered in England and Wales under company number 4268443, Registered Office is Cumbria House, 16-20 Hockliffe Street, Leighton Buzzard, Bedfordshire, LU7 1GN. VAT Registration Number is 500 2481 05.


fox & sons



01794 513085



Romsey@fox-and-sons.co.uk



2 Market Place, ROMSEY, Hampshire, SO51 8NB



fox-and-sons.co.uk