



Middleton Place, W1W

£925,000

A two bedroom flat arranged over the upper floors of a period building. Located in Middleton Place one of the West End's few surviving Georgian pedestrian walkways.

The amenities of the West End are accessible on foot. Nearby stations are Oxford Circus and Tottenham Court Road where the Elizabeth Line provides direct links to London Heathrow, the City and Docklands.

Features

- Two Bedrooms
- Reception/Dining Room
- Kitchen
- Private Entrance
- 999 Lease From 2002

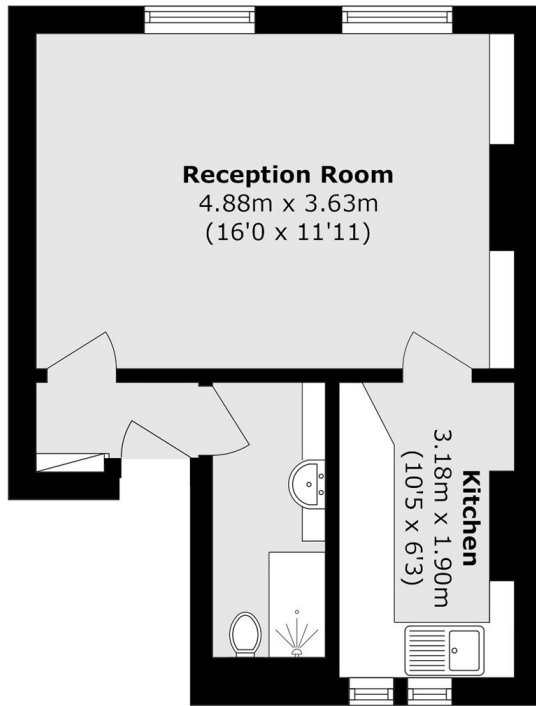


Middleton Place, W1W

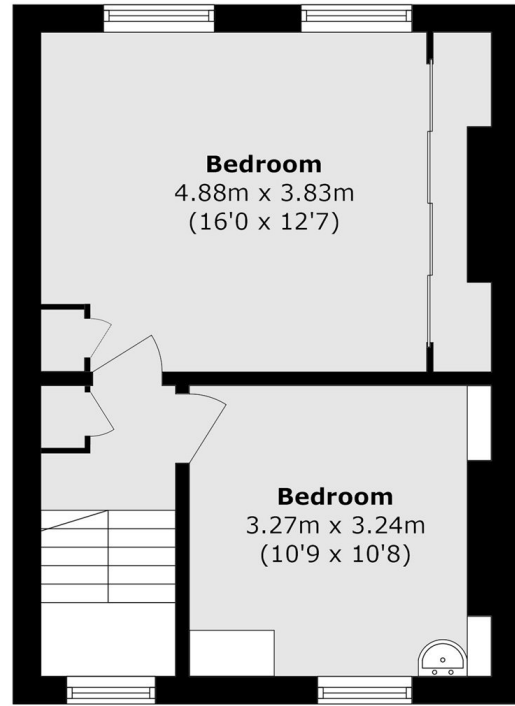
The property is arranged over the first and second floors of the building. The first floor has reception room with two westerly facing sash windows to the front aspect, the room leads to the kitchen which requires updating. Additionally there is a shower room. The two bedrooms are located on the upper floor.



Middleton Place, London, W1W



First Floor



Second Floor

Total area (approx.): 64.6 sq. m (695.3 sq. ft)