



Downside, Hemel Hempstead, HP2 5PU

Offers In Excess Of £200,000

Offered with the benefit of no upper chain is this spacious and well presented first floor purpose built flat. The property boasts a 17'7 lounge, modern fitted kitchen, two bedrooms, bathroom, gas central heating and double glazing.

Located in a Cul de Sac close to the Old Town and within easy reach of the Town Centre with it shopping, restaurant and travel facilities.

Communal Hall

Entrance Hall



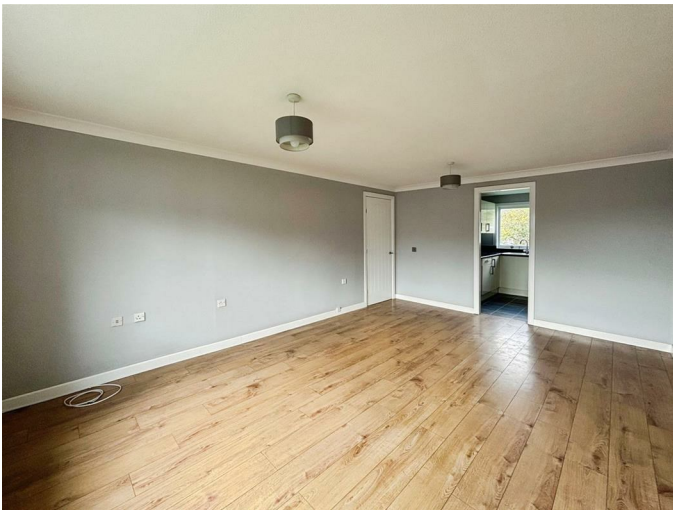
Bedroom One 10'7 x 10'5 (3.23m x 3.18m)



Bedroom Two 8'5 x 6'8 (2.57m x 2.03m)

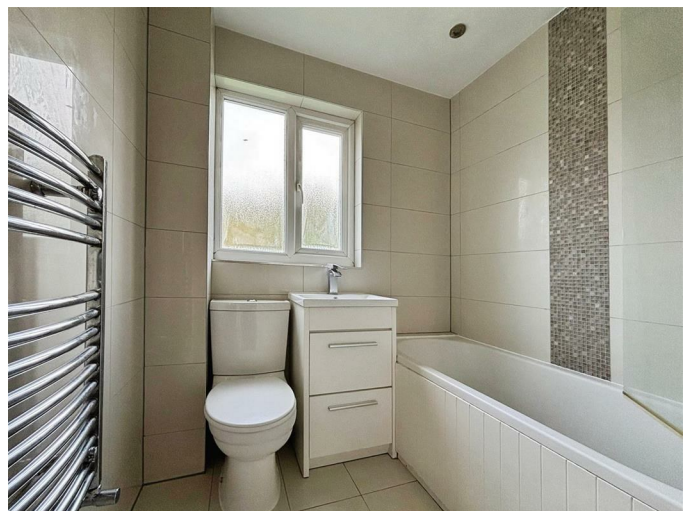


Lounge 17'7 x 12'3 (5.36m x 3.73m)

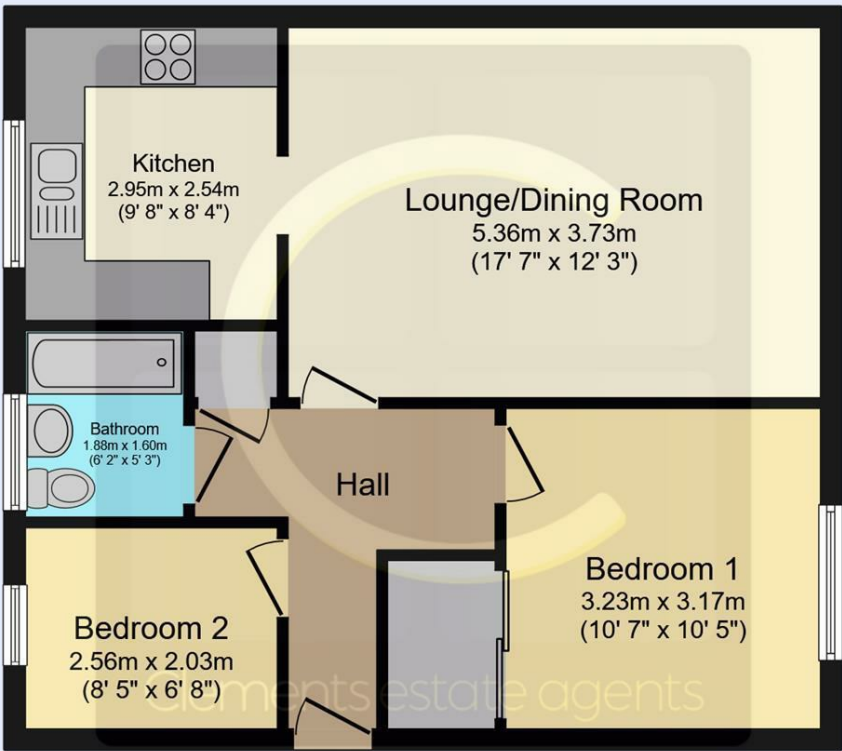


Bathroom

Fitted Kitchen 9'8 x 8'4 (2.95m x 2.54m)



Floor Plan

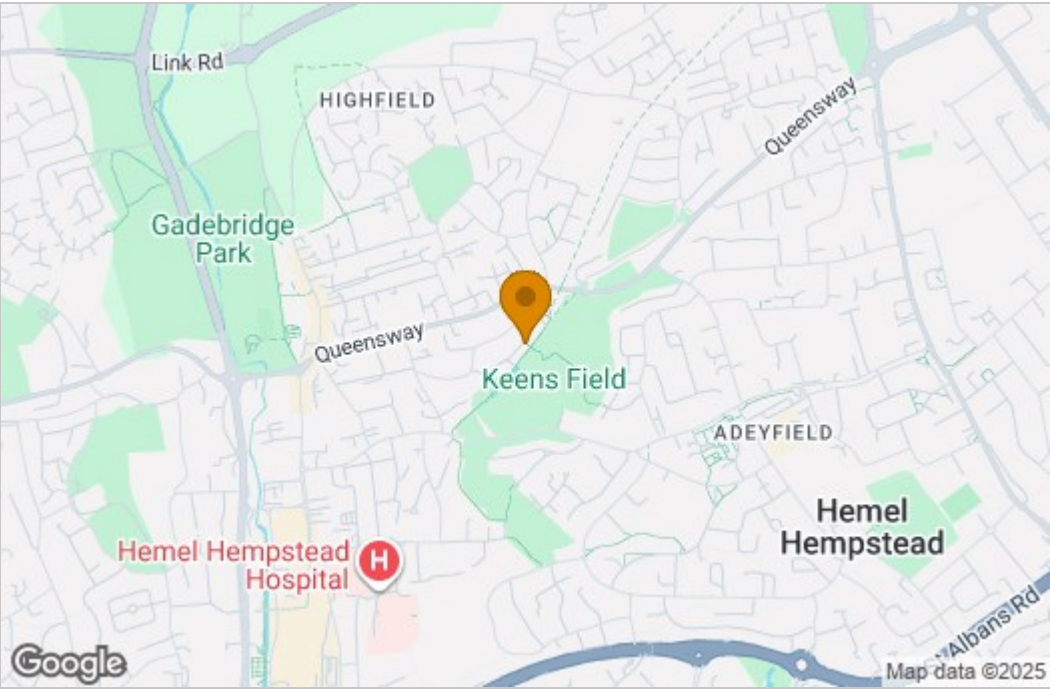


First Floor

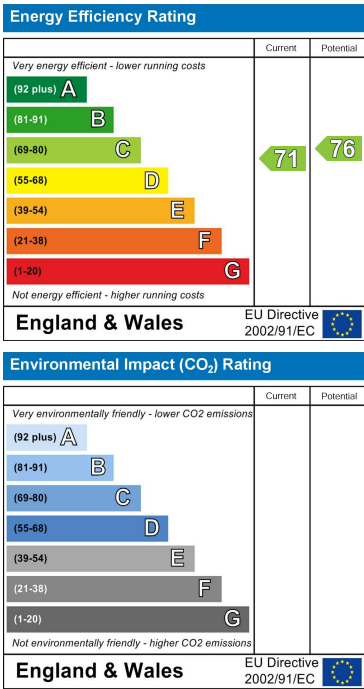
This floor plan is for illustrative purposes only. It is not drawn to scale. Any measurements, floor areas (including any total floor area), openings and orientations are approximate. No details are guaranteed, they cannot be relied upon for any purpose and do not form any part of any agreement. No liability is taken for any error, omission or misstatement. A party must rely upon its own inspection(s). Powered by www.Propertybox.io



Area Map



Energy Efficiency Graph



These particulars, whilst believed to be accurate are set out as a general outline only for guidance and do not constitute any part of an offer or contract. Intending purchasers should not rely on them as statements of representation of fact, but must satisfy themselves by inspection or otherwise as to their accuracy. No person in this firms employment has the authority to make or give any representation or warranty in respect of the property.