

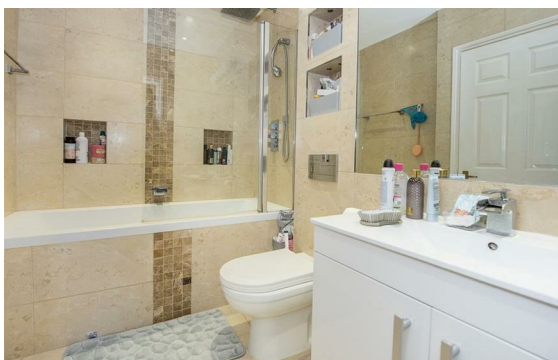


St. Edmunds Terrace, St John's Wood, London, NW8

Rent £875 PCM

2 Bed | 2 Bath | 1 Reception

Please call us on 020 7724 2233 or email us info@newingtonstates.com to book a viewing.



60 Upper Montagu Street

London

W1H 1SN

020 7724 2233

info@newingtonstates.com

A well-presented two-bedroom apartment offering comfortable living space in a sought-after St John's Wood location. The property features a spacious reception and dining room with access to a private balcony, a fitted kitchen, and two double bedrooms with built-in wardrobes. The principal bedroom benefits from an en-suite bathroom, complemented by a separate family bathroom.

Residents benefit from lift access and porter service. Ideally located close to Primrose Hill, Regent's Park, St John's Wood High Street, and St John's Wood Station.

EPC Rating: C

Energy Efficiency Rating: C

Agents Note: Whilst every care has been taken to prepare these particulars, they are for guidance purposes only. All measurements are approximate and are for general guidance purposes only and whilst every care has been taken to ensure their accuracy, they should not be relied upon and potential buyers/tenants are advised to recheck the measurements.

<http://www.newingtonstates.com>