



**Offers In
Excess Of
£300,000
Freehold**

3x  2x  1x 

**Heronden View, Eastry,
Sandwich, Kent, CT13**

Wards
Helping you move forwards



Main features

- Detached house in excellent condition throughout
- Low maintenance rear garden with stunning countryside views
- Downstairs cloakroom and en-suite to main bedroom
- Off-road parking for multiple vehicles and a garage
- A short distance to Sandwich centre

Accommodation

GROUND FLOOR

Entrance Hall
Cloakroom
Kitchen: 15'8 x 8'9 (4.78m x 2.67m)
Lounge/Dining Room: 15'8 x 10'7 (4.78m x 3.23m)
Conservatory: 18'1 x 10'7 (5.52m x 3.23m)

FIRST FLOOR

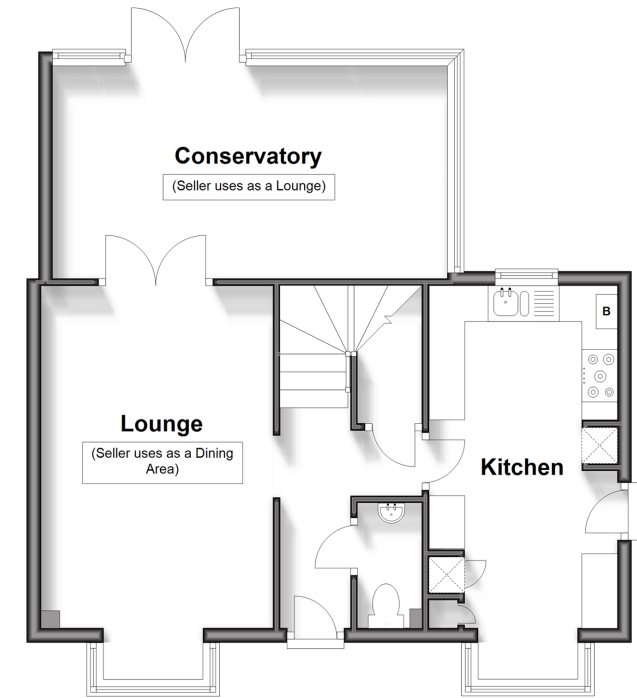
Landing
Bathroom
Bedroom 1: 8'10 x 8'8 (2.69m x 2.64m)
En-Suite Shower Room
Bedroom 2: 11'11 x 6'8 (3.63m x 2.03m)
Bedroom 3: 8'7 x 8'5 (2.62m x 2.57m)

OUTSIDE

Garage and driveway
Front and rear gardens

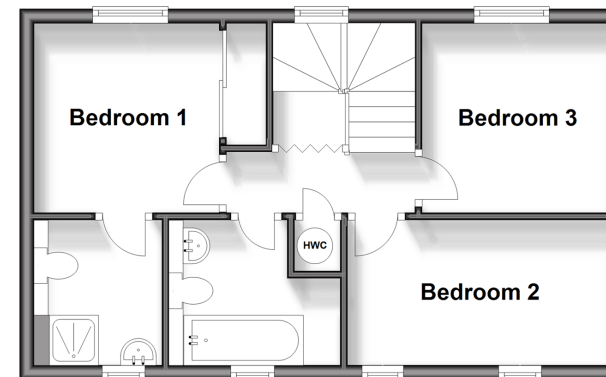
Ground Floor

Approx. 56.6 sq. metres (609.7 sq. feet)



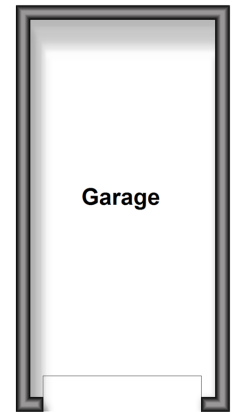
First Floor

Approx. 38.7 sq. metres (416.2 sq. feet)



Outbuilding

Approx. 13.7 sq. metres (147.6 sq. feet)



Call Deal - 01304 361420 ■ wardsofkent.co.uk

- Legal advice should be taken to verify fixtures/fittings, planning, alterations and/or lease details
- Appliances & services are untested, dimensions are approximate and floor plans are not to scale



10635596/20251110/WSM/WSM