



jordan fishwick

DIDSBURY
Parrs Wood Road

**Parrs Wood Road,
Didsbury, M20 6FT**

£215,000



The Property

A large, top floor, two double bedroom apartment forming part of a POPULAR PURPOSE BUILT DEVELOPMENT with secure GATED PARKING and convenient location which is within a short stroll of THE METROLINK & DIDSBURY VILLAGE. 577 sq ft. In outline:- Communal entrance and stairs to all floors, large private entrance hall with generous storage space off, living room, fitted kitchen, main bedroom extending over 13ft with ample space for freestanding furniture, second double bedroom and a bathroom with three piece white suite. The property benefits from uPVC double glazing and electric heating and lies within well tended communal grounds with a gated residents car park to the rear. *NO ONWARD CHAIN*

Directions

M20 6FT



- Two double bedroom apartment
- Top floor position
- Gated residents parking
- Central Didsbury location
- Ample storage
- Well tended communal grounds
- NO CHAIN

Postcode - M20 6FT

EPC Rating - C

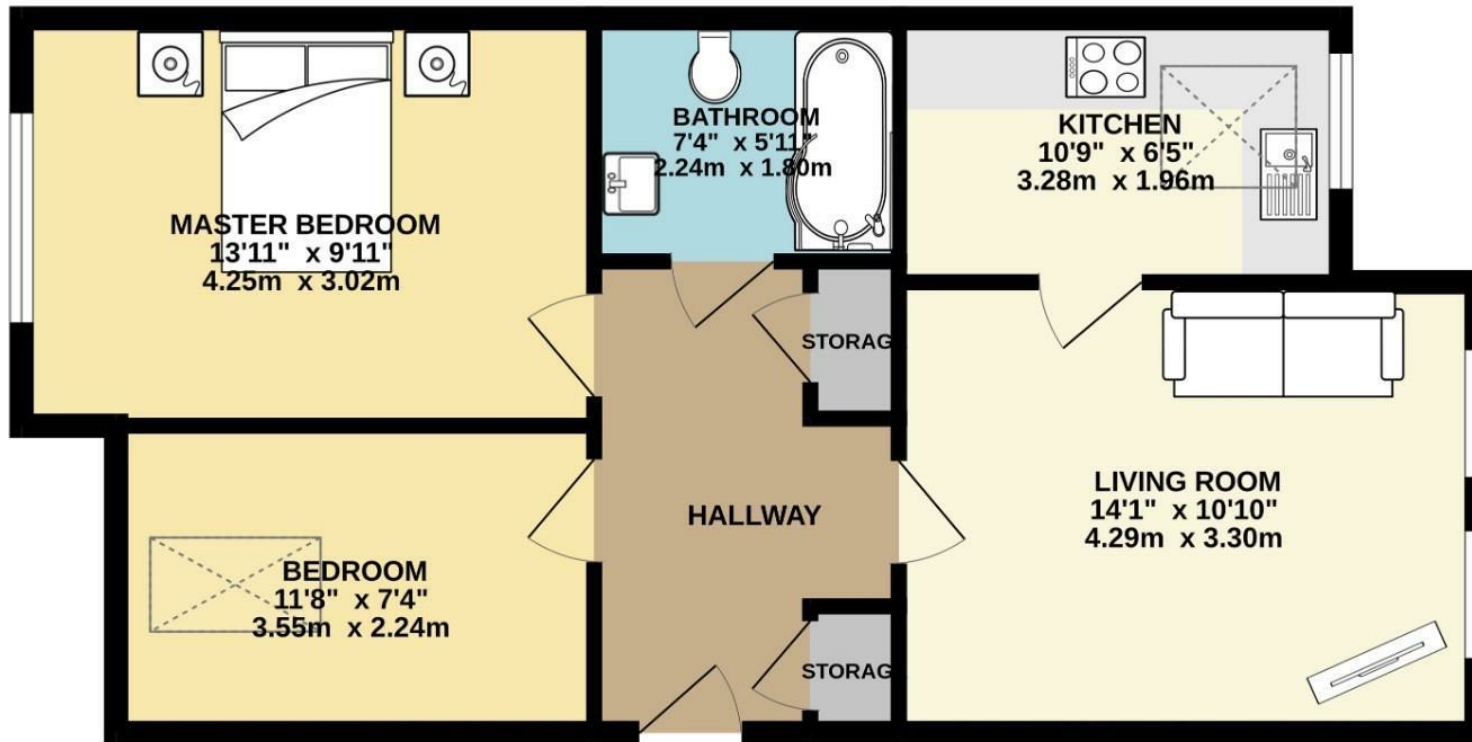
Floor Area - 577.00 sq ft

Local Authority - Manchester City Council

Council Tax - D



TOP FLOOR
577 sq.ft. (53.6 sq.m.) approx.



TOTAL FLOOR AREA : 577 sq.ft. (53.6 sq.m.) approx.
Measurements are approximate. Not to scale. Illustrative purposes only
Made with Metropix ©2026



These particulars are believed to be accurate but they are not guaranteed and do not form a contract. Neither Jordan Fishwick nor the vendor or lessor accept any responsibility in respect of these particulars, which are not intended to be statements or representations of fact and any intending purchaser or lessee must satisfy himself by inspection or otherwise as to the correctness of each of the statements contained in these particulars. Any floorplans on this brochure are for illustrative purposes only and are not necessarily to scale.

Offices also at: Wilmslow, Macclesfield, Hale, Sale, Chorlton, Glossop, Manchester & Salford

757-759 Wilmslow Road, Didsbury Village, Manchester

0161 445 4480

didsbury@jordanfishwick.co.uk
www.jordanfishwick.co.uk