



## 11 Little Road, South Littleton

Guide Price **£550,000**





## 11 Little Road

South Littleton, Evesham

Council Tax band: C

Tenure: Freehold

EPC Energy Efficiency Rating: F

EPC Environmental Impact Rating:

- VIEWING HIGHLY ADVISED
- LARGE PLOT
- KITCHEN , DINING ROOM AND UTILITY
- BOOT ROOM
- LIGHT AND AIRY LOUNGE
- CONSERVATORY
- SPACIOUS AND VERSATILE LIVING
- FOUR BEDROOMS
- LARGE PRIVATE REAR GARDEN
- DRIVEWAY AND GARAGE



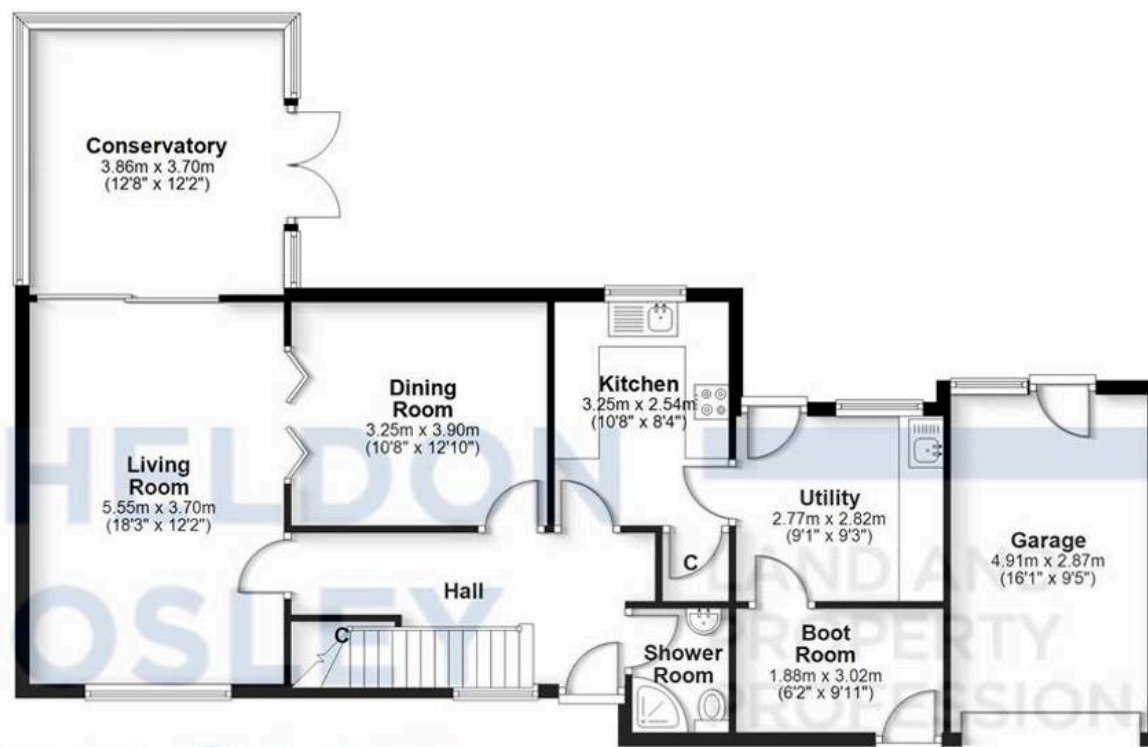






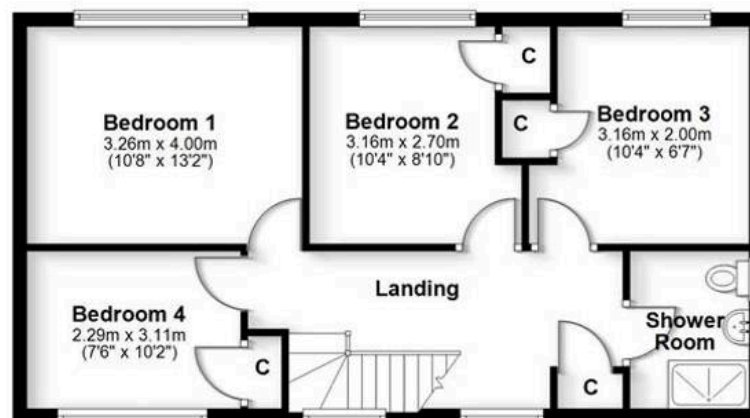
## Ground Floor

Approx. 100.7 sq. metres (1084.4 sq. feet)



## First Floor

Approx. 59.1 sq. metres (635.8 sq. feet)



Total area: approx. 159.8 sq. metres (1720.2 sq. feet)

All efforts have been made to ensure the measurements are accurate on this floor plan, however these are for guidance purposes only.  
Plan produced using PlanUp.