

OVER 60?

Secure this property
for up to **59% less!**



Guide Price

£450,000

Freehold

4x  2x  3x 

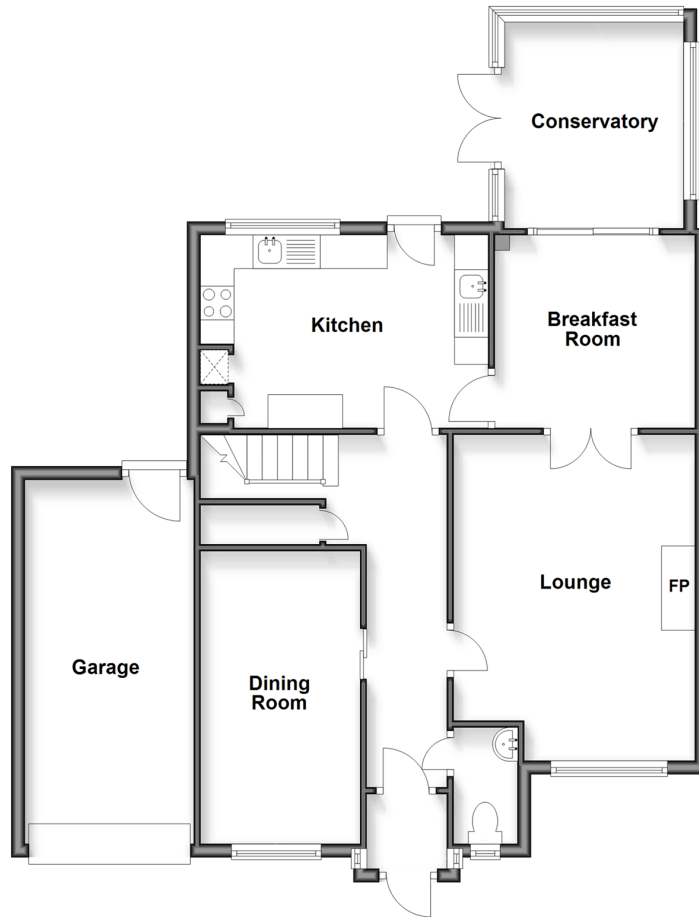
Anderson Close, Newhaven, East Sussex,

BN9

cubitt & west
Helping you move forwards

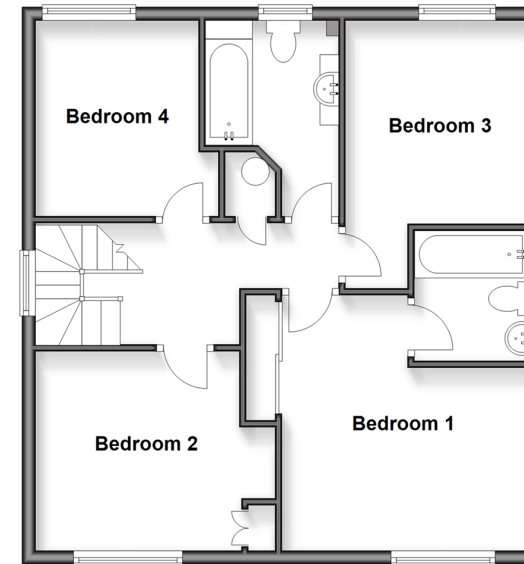
Ground Floor

Approx. 86.1 sq. metres (926.3 sq. feet)



First Floor

Approx. 57.8 sq. metres (622.1 sq. feet)



Accommodation

GROUND FLOOR

Entrance Porch
Inner Hallway
Cloakroom
Dining Room: 13'6 x 7'9 (4.12m x 2.36m)
Lounge: 15'8 x 11'6 (4.78m x 3.51m)
Kitchen: 14'0 x 9'2 (4.27m x 2.80m)
Breakfast Room: 9'8 x 9'2 (2.95m x 2.80m)
Conservatory: 11'6 x 9'2 (3.51m x 2.80m)

FIRST FLOOR

Landing
Bedroom 1: 12'8 x 12'2 (3.86m x 3.71m)
Ensuite Bathroom
Bedroom 2: 11'9 x 9'6 (3.58m x 2.90m)
Bedroom 3: 9'6 x 9'3 (2.90m x 2.82m)
Bedroom 4: 9'5 x 9'0 (2.87m x 2.75m)
Family Bathroom

OUTSIDE

Garage: 18'2 x 8'3 (5.54m x 2.52m)
Rear and Front Garden
Driveway



Main features

- Good sized home which backs onto stunning farmland
- Stunning views of Newhaven from the back of the rear garden
- Multi-functional rooms downstairs
- Bedroom 1 benefits from an ensuite bathroom
- Bright conservatory leading to the rear garden
- Driveway large enough for multiple cars and a garage

Nearest Schools

Primary Schools: Southdown Junior School 1.1 miles, Meeching Valley Primary 1.8 miles, Denton Community Primary 2.5 miles Secondary Schools: Tideway School 1.8 miles, Peacehaven Community School 2.6 miles, Cuckmere House School 4.2 miles

Transport Information

Train Stations: Newhaven Town 1.7 miles, Newhaven Harbour 1.9 miles, Bishopstone 3.7 miles

Address

Anderson Close, Newhaven, East Sussex, BN9

Directions

For directions to this property please contact us.



cubitt&west
Helping you move forwards

Call Peacehaven Branch 01273 584511 ■ cubittandwest.co.uk



- A private rental licensing scheme applies to some properties in this area, please check with the Local Authority before proceeding
- Appliances & services are untested, dimensions are approximate and floor plans are not to scale

- Legal advice should be taken to verify fixtures/fittings, planning, alterations and/or lease details
- Through a Homewise Home For Life Plan people aged 60+ can secure this property for up to 59% less, by purchasing a Lifetime Lease



31810858/20260312/CA/SB