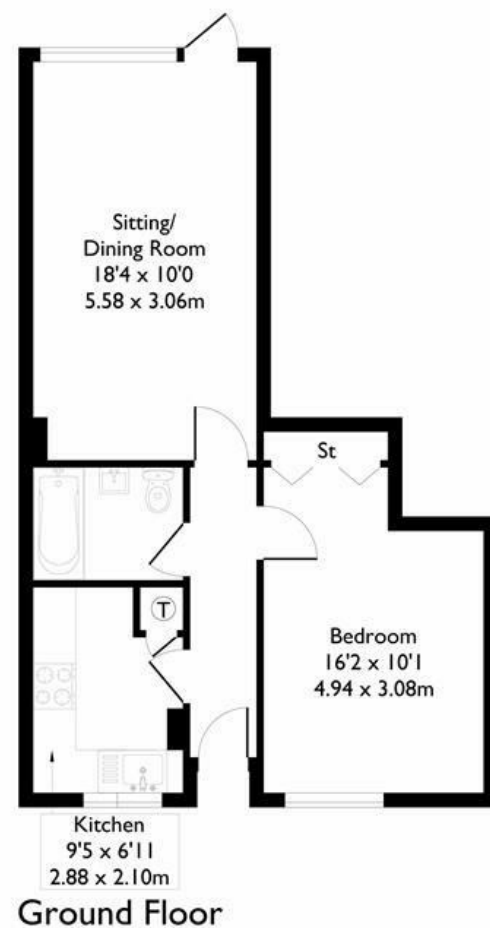


Fairlea Place, London, W5  
Approximate Floor Area = 45.7 sq m / 492 sq ft



Floor plan produced in accordance with RICS Property Measurement 2nd Edition. Although Pink Plan Ltd ensures the highest level of accuracy, measurements of doors, windows and rooms are approximate and no responsibility is taken for error, omission or misstatement. These plans are for representation purposes only and no guarantee is given on the total square footage of the property within this plan. The figure icon is for initial guidance only and should not be relied on as a basis of valuation.



#### FLAT

#### FEATURES

**Fairlea Place W5**  
**£1,600 PCM**



FLAT

# Fairlea Place W5

£1,600 PCM

With its own private front door, this recently refurbished one bedroom purpose built flat is set in a quiet cul-de-sac offering easy access to Ealing Broadway and it's multiple transport links, as well as being moments away from the shops and restaurants of Pitshanger Village. The accommodation comprises fully fitted kitchen, large living room with access to the communal gardens, double bedroom with built in storage and contemporary bathroom. Other benefits include off street parking.

