



A contemporary two bedroom, two bathroom apartment with allocated parking
Eastbury Avenue, Northwood, HA6 3LN



Asking Price: £3,200 pcm

A contemporary two bedroom, two bathroom apartment with allocated parking

Eastbury Avenue, Northwood, HA6 3LN

• ENTRANCE HALL • LIVING ROOM OPEN PLAN TO KITCHEN • ACCESS TO BALCONY • BEDROOM ONE WITH ENSUITE BATHROOM & FITTED WARDROBES • BEDROOM TWO WITH WARDROBES • BALCONG FROM BEDROOM ONE • SHOWER ROOM • SEPARATE WC • COMMUNAL GROUNDS • TWO ALLOCATED PARKING SPACES • UNFURNISHED

Description

A luxury two bedroom, two bathroom contemporary apartment forming part of a desirable development on the highly sought after Eastbury Avenue. Designed with style and comfort in mind, the apartment features spacious interiors, sleek modern appliances, and elegant finishes throughout. Unlike a lot of developments, this apartment comes with two allocated, underground parking spaces, whilst for commuters, Northwood Underground Station (Metropolitan Line) is only a short walk away. The apartment itself comprises a light-filled kitchen/dining/living area with a stylish kitchen, two double bedrooms with elegant en-suite shower rooms, and a separate guest WC. The apartment boasts two large balconies, one accessible via the living area and one via one of the bedrooms, perfect for the warmer months.

** An advance reservation payment of one weeks rent is required to secure

Location

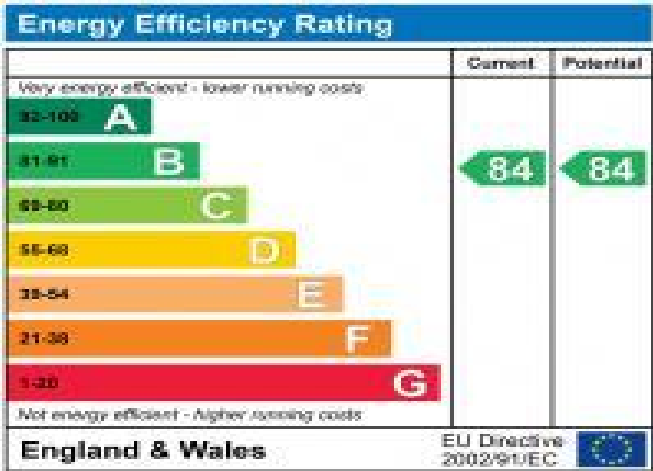
Northwood provides a range of shopping facilities including a Waitrose supermarket, a variety of restaurants and other amenities with the Metropolitan Line station providing access to Baker Street and the City. There is a plethora of state and private schooling together with a wide choice of recreational facilities, which include golf courses and fitness centres. The M1, M40 and M25 motorways are also accessible.





Additional Information

- Local Authority: Three Rivers
- Council Tax Band:
- Deposit Amount: £3,692.00
- Reservation Payment: One weeks rent
- Energy Efficiency Rating: Band B
- Available Date: 01/06/2026



Approximate Gross Internal Area = 82.8 sq m / 891 sq ft

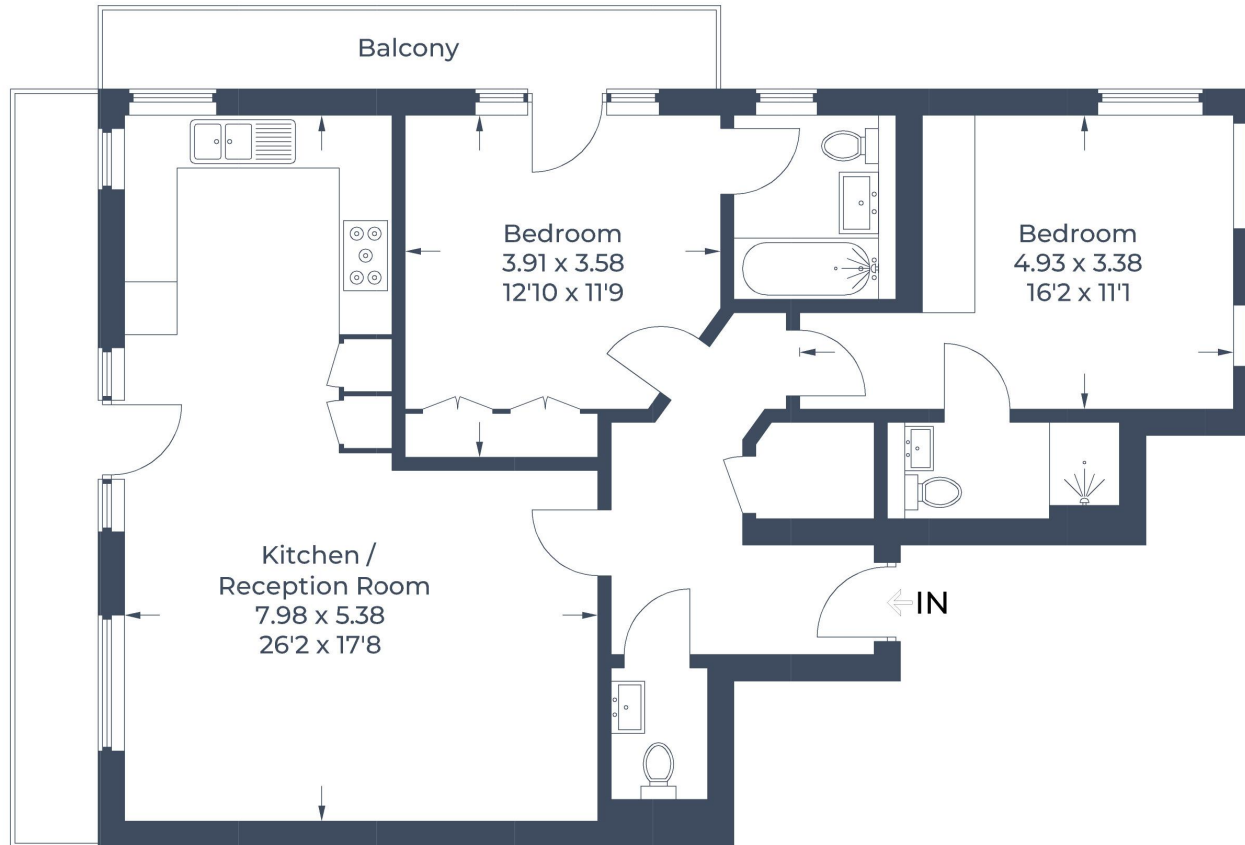


Illustration for identification purposes only,
measurements are approximate, not to scale.
© CJ Property Marketing Produced for Robsons



Middlesex | Hertfordshire | Buckinghamshire



REGISTERED OFFICE 2-4 PACKHORSE ROAD, GERRARDS CROSS, BUCKINGHAMSHIRE, ENGLAND, SL9 7QE. COMPANY NO. 07557114. VAT NO. GB211239453