



## Earl's Court Square, SW5

£600 Per week

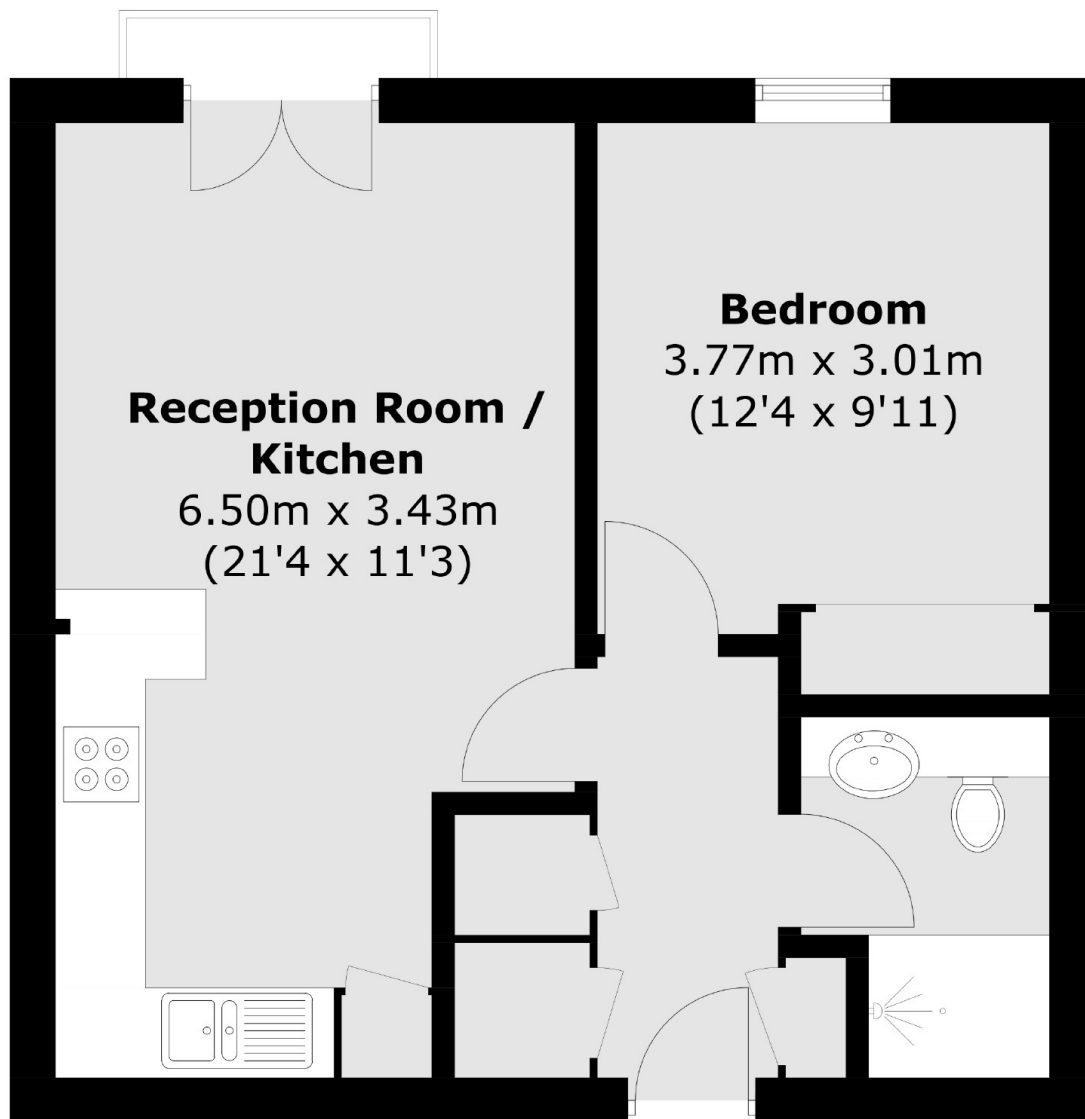
A large one double bedroom apartment based on the third floor of a period conversion. Benefits include wood flooring throughout, a balcony and built-in storage.

Arguably Earl's Courts finest garden square, Earls Court Square is nestled quietly away from the hustle and bustle of Earls Court Road, whilst remaining comfortably within walking distance of the amenities and tube station.

### Features

- One Double Bedroom
- Balcony
- Wood Flooring Throughout
- Built-in Storage
- Garden Square
- Close to Amenities

# Earl's Court Square, London, SW5



Total area (approx.): 42.2 sq. m (454.2 sq. ft)