

## Florence Road Wimbledon, SW19 8TL

**Offers In Excess Of £900,000 Freehold**

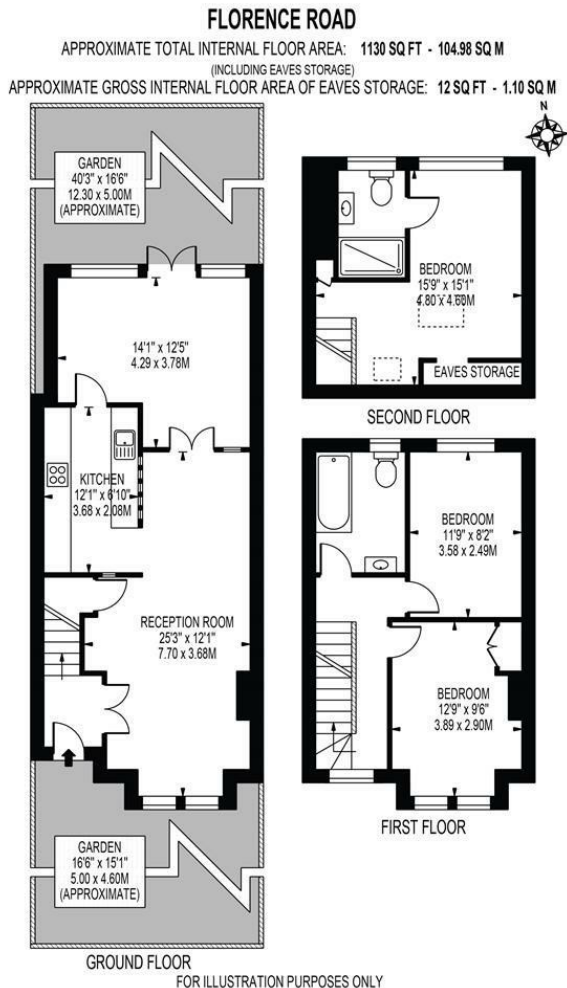


Located within the highly desirable South Park Gardens Grid of Wimbledon, a three double bedroom, two bathroom Victorian terraced family home, offered to the market with no onward chain. Situated within close proximity of the Ofsted "Outstanding" rated Holy Trinity Primary School, and equidistant to both Wimbledon Town Centre, Mainline Train Station and the Northern Line Tube.

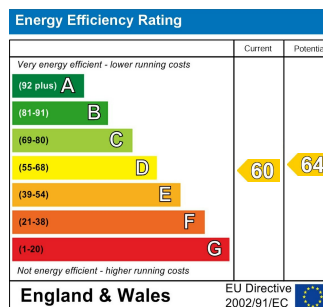
Comprising a double length reception with wooden flooring, a separate fitted kitchen and conservatory at the rear. French doors open out onto the private garden which includes a summerhouse and shed.

Upstairs consists of two double bedrooms and a family bathroom, with the principal double bedroom and en suite shower room located in the converted loft with eaves storage.

This is a brilliant opportunity to put your mark on a South Park Gardens property in one of Wimbledon Town's most sought after roads.



- Victorian Terraced Family Home
- Three Double Bedrooms
- Two Bathrooms
- Double Length Reception & Conservatory
- Desirable South Park Gardens Location
- Close to Outstanding Schools and Multiple Transport Links
- No Onward Chain
- Freehold
- EPC Rating - D
- Council Tax Band - F



**For Free Mortgage Quote and Best Mortgage Rates, call an Ellisons Mortgage Advisor on 020 8944 9494**



Although these particulars are believed to be correct, their accuracy is not guaranteed and they do not form part of any contract.

**Celebrating 30 years of successful Sales and Lettings in Merton**

