



PEVENSEY ROAD, SW17

£850,000

- Five Bedrooms
- Three bathrooms
- End Of Terrace
- Recently Renovated
- Side Access
- Landscaped Garden





ABOUT THE HOME

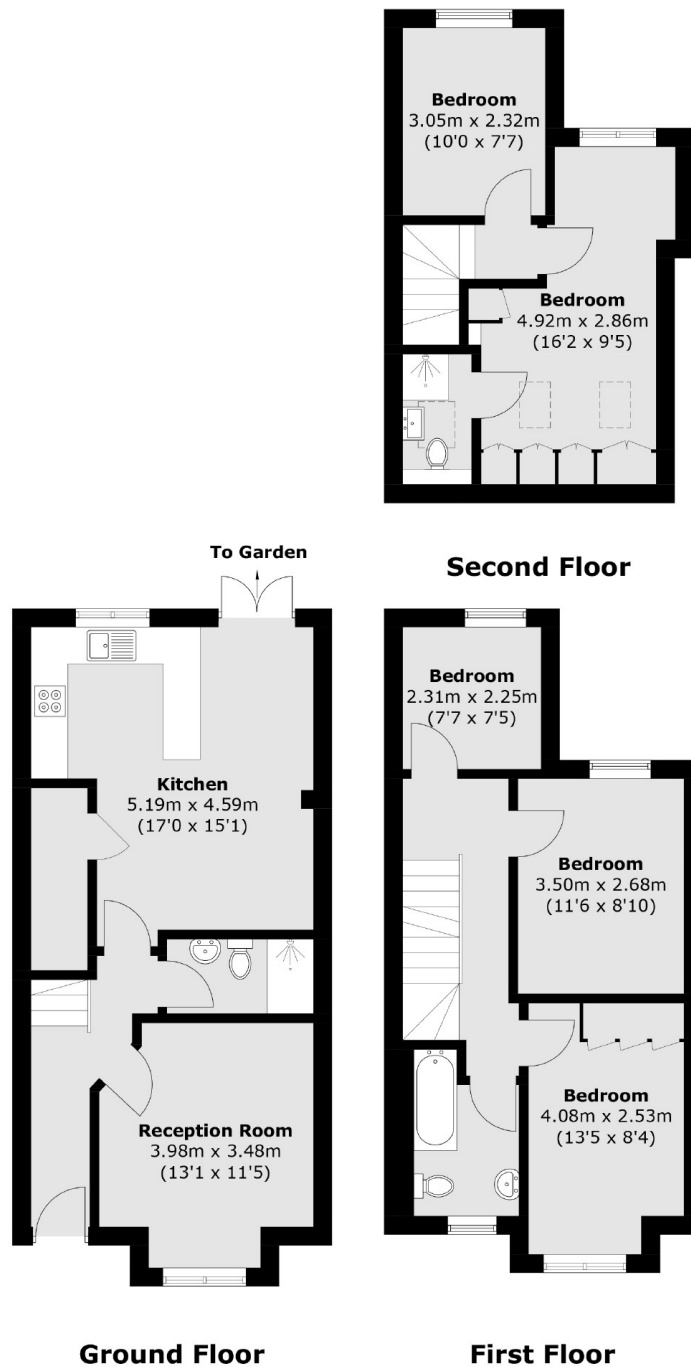
Offers in Excess of £830,000

A wonderfully presented 5 bedroom, 3 bathroom end of terrace family home that is stylishly presented throughout and has benefited from a recent loft conversion to now offer additional bedrooms and bathroom. Located on the junction of Pevensey Road and Rostella Road in one of Tooting's popular enclaves. Internally the property layout comprises; A bright south west sitting room with fitted storage cupboards, a well-appointed ground floor shower room and finally a generous open plan kitchen / diner forming the hub of this family home. That includes a large breakfast bar, integrated appliances and French doors leading out to an open garden with mature borders that benefits from sunlight both in the morning and afternoon. Returning inside to the first floor, you will find 3 well-proportioned double bedrooms with fitted wardrobes to the principal bedroom and a family bathroom with shower over the bath. The recent addition of a loft room which offers a fantastic home office, primary bedroom with a modern en-suite bathroom and ample eaves and wardrobe storage space.



Pevensey Road is conveniently located moments from [Tooting Broadway tube station](#), [St Georges University hospital](#) and the vibrant nightlife of Tooting Broadway





Total area (approx.): 112.6 sq. m (1,212.1 sq. ft)

JACKSONS TOOTING

3 Upper Tooting Road, London,
SW17 7TS
Sales: 020 8487 3175
Lettings: 020 8487 3176

Energy Rating: Appraisal We aim to make our particulars both accurate and reliable. However they are not guaranteed; nor do they form part of an offer or contract. If you require clarification on any points then please contact us, especially if you're traveling some distance to view. Please note that appliances and heating systems have not been tested and therefore no warranties can be given as to their good working order.