



## Milner Road, SW19

### £509,950

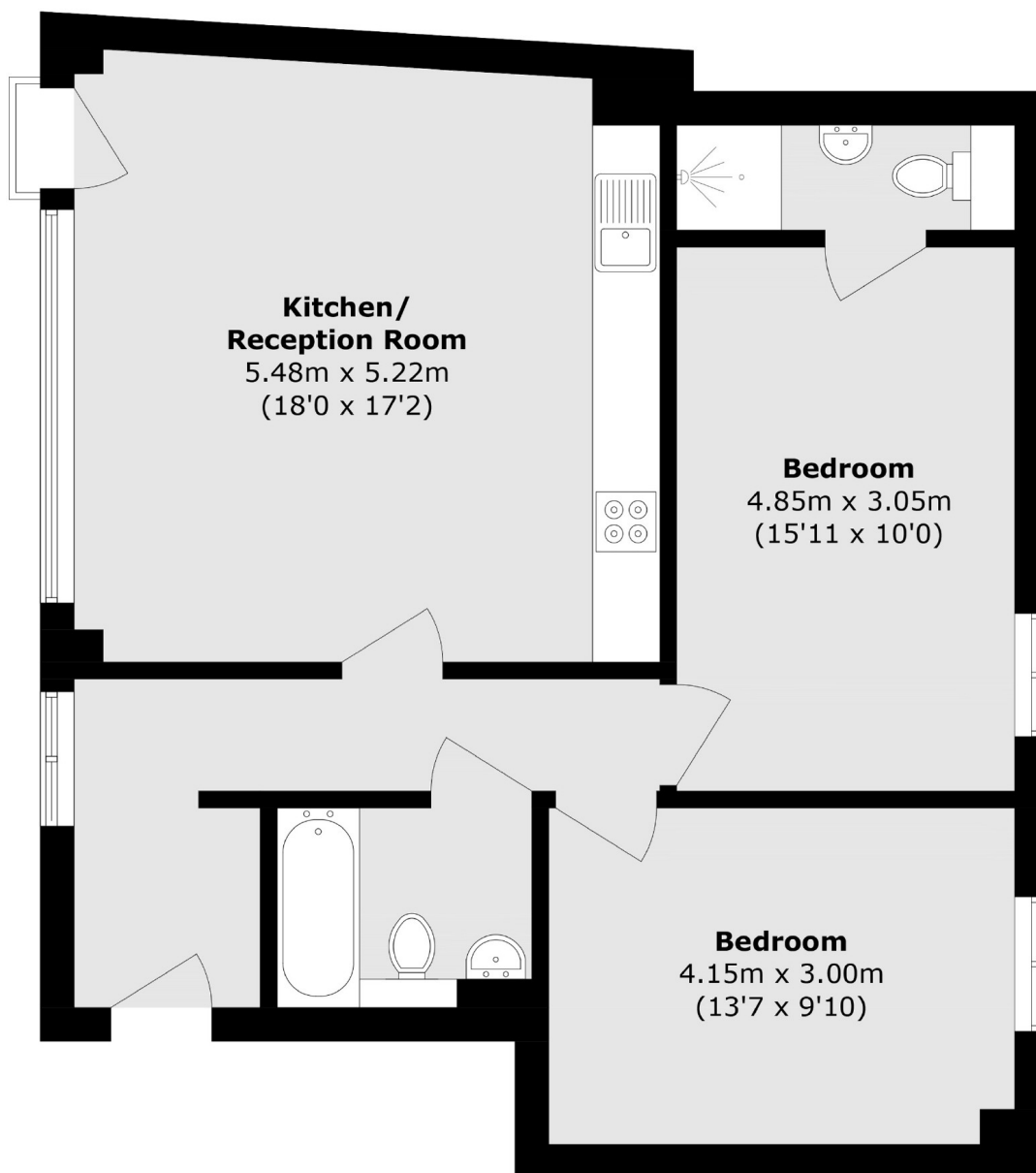
An opportunity to purchase this first floor, two double bedroom, two bathroom, purpose built modern apartment. The property benefits from a large open plan kitchen / reception room with integrated appliances and is offered with no forward chain.

Located within one minute of South Wimbledon underground station and close to Wimbledon Broadway, the Northern line is practically on your doorstep alongside an eclectic range of bars, restaurants and a theatre nearby

### Features

- Two Double Bedrooms
- Two Bathrooms
- First Floor
- Modern Apartment
- Excellent Transport Links
- No Forward Chain

# Milner Road, London, SW19



Total area (approx.): 73.5 sq. m (791.1 sq. ft)

## Dexters

Wimbledon  
12 The Broadway  
London  
SW19 1RF  
Sales  
020 8545 8580

Energy Rating: B. We aim to make our particulars both accurate and reliable. However they are not guaranteed; nor do they form part of an offer or contract. If you require clarification on any points then please contact us, especially if you're traveling some distance to view. Please note that appliances and heating systems have not been tested and therefore no warranties can be given as to their good working order.

 **RICS** | Regulated  
Estate Agent  
and Letting Agent

[dexters.co.uk](https://www.dexters.co.uk)