



****AVAILABLE IMMEDIATELY****

****FURNISHED**** Centrally located close to West Jesmond Metro Station, Sainsbury's Supermarket and the shops of Acorn Road, a great two bedroom ground floor 'Tyneside' style flat located on Glenthorn Road, Jesmond. Fully furnished, this property will make a great home for students or professionals alike!

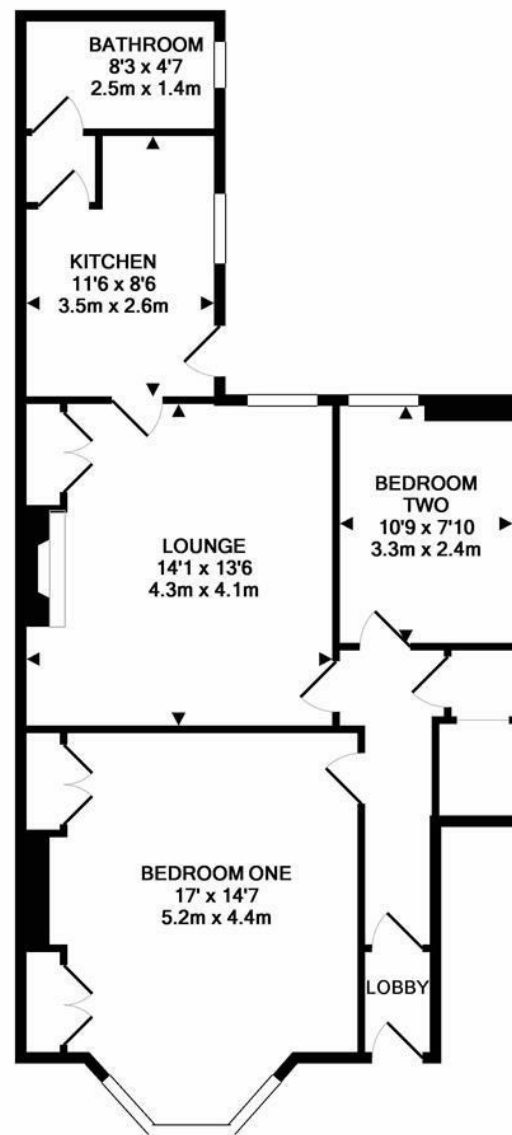
The accommodation briefly comprises; entrance lobby through to entrance hall with walk-in storage cupboard; bedroom one, a generous room with tall ceilings and walk-in bay; bedroom two, another double with south-facing aspect; lounge with feature fireplace and built-in storage; fitted kitchen with appliances; rear lobby and bathroom WC. With gas central heating, double glazed windows and a south-facing private rear yard, an early internal inspection is highly recommended.

Available fully furnished, ideal for either a couple or individual sharers.

Available Immediately | £1,100pcm | Furnished | Ground Floor Tyneside Flat | 715 Sq ft (66.4m²) | Two Bedrooms | Lounge | Kitchen | Bathroom WC | South Facing Private Rear Yard | Great Central Location | GCH & DG | Council Tax Band: B | EPC Rating: D

£1,100 PCM

IMPORTANT NOTE: These particulars and the descriptions and measurements herein do not constitute representation and whilst every effort has been made to ensure accuracy, this cannot be guaranteed.



TOTAL APPROX. FLOOR AREA 715 SQ.FT. (66.4 SQ.M.)

Whilst every attempt has been made to ensure the accuracy of the floor plan contained here, measurements of doors, windows, rooms and any other items are approximate and no responsibility is taken for any error, omission, or mis-statement. This plan is for illustrative purposes only and should be used as such by any prospective purchaser. The services, systems and appliances shown have not been tested and no guarantee as to their operability or efficiency can be given
Made with Metropix ©2017

