



ST. GEORGE WHARF, SW8

£1,225,000

A recently modernised three bedroom, two bathroom apartment with views of Westminster, the London Eye and Battersea Power Station. The property has access to a balcony with panoramic views of both directions of the River.

- River Views
- Three Bedrooms
- 5th Floor
- 1,174 Square Foot
- Two Private Balconies
- Excellent Transport Links

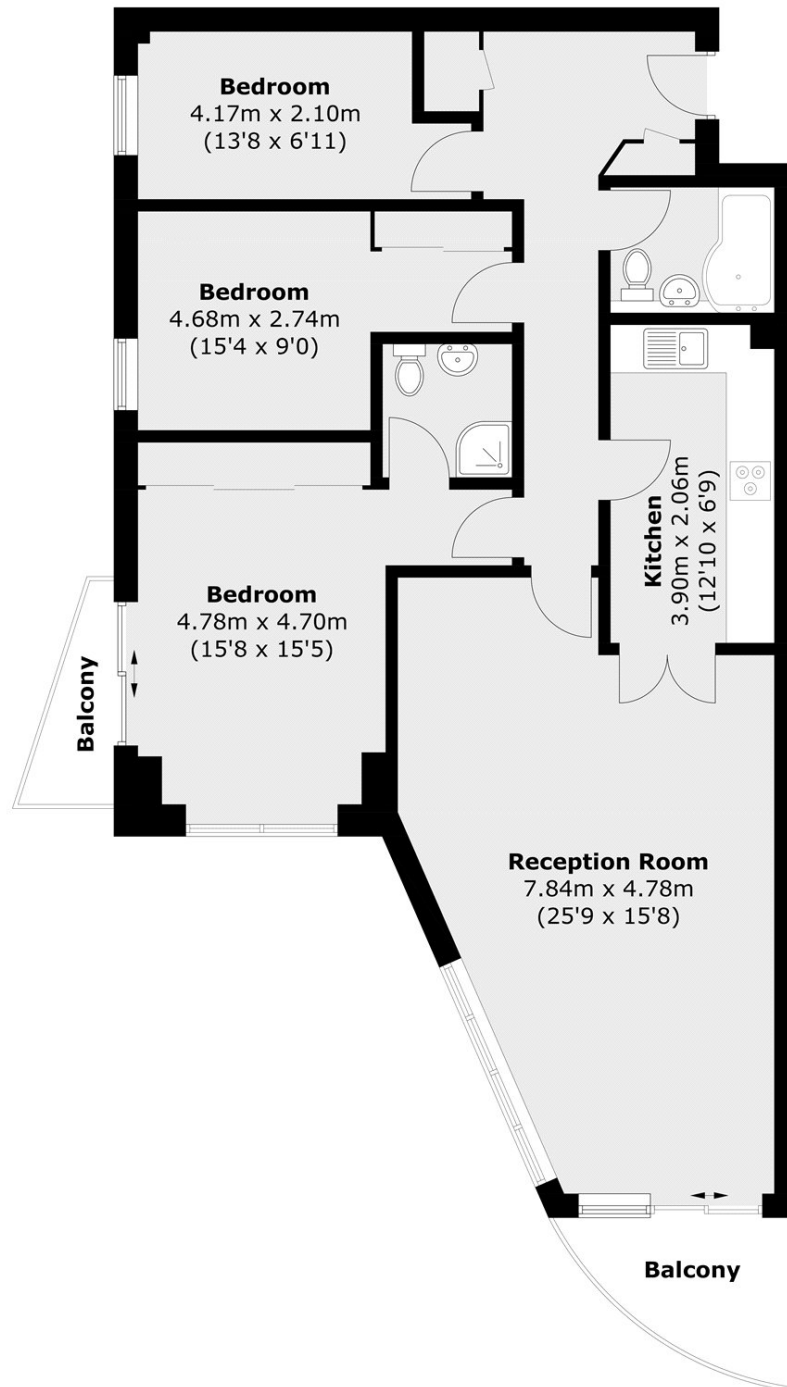


ABOUT THE HOME

St George Wharf has access to 24-hour concierge service in addition to a variety of other amenities include an on-site gym, a selection of riverside restaurants & bars, supermarket and the clipper boat service. Vauxhall station (Victoria Line and National Rail) located next to the development.







Total area (approx.): 94.1 sq. m (1,012.9 sq. ft)
Balcony: 6.4 sq. m (68.9 sq. ft)

LiFE RESIDENTIAL

11 Flagstaff House, London,
SW8 2LZ

Sales: 020 7476 1408

Lettings: 020 7582 7989

Energy Rating: C. We aim to make our particulars both accurate and reliable. However they are not guaranteed; nor do they form part of an offer or contract. If you require clarification on any points then please contact us, especially if you're traveling some distance to view. Please note that appliances and heating systems have not been tested and therefore no warranties can be given as to their good working order.