



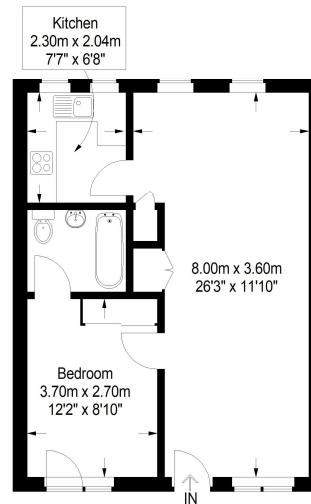
Please note, the furniture in this image has been virtually staged.

Glovers Lodge
Lewis Road, TW10

CHESTERTONS

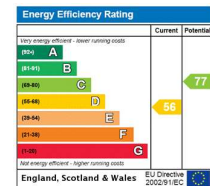
Glovers Lodge

Approx. Gross Internal Area
47 sq mt / 506 sq ft



- No Onward Chain
- Central Richmond Location
- Close To The River
- Communal Area
- Great Transport Links

Asking Price £275,000



Tenure: Leasehold 176 years

Service Charge: £1932.2

Ground Rent: £100

Local Authority: London Borough of Richmond upon Thames

Council Tax Band: D

Chestertons Richmond Sales

23a Friars Stile Road

Richmond

Surrey

TW10 6NH

richmond@chestertons.co.uk

020 8758 2222

Chesterton UK Services Limited trading as Chestertons for themselves and for the vendor of this property whose agents they are, give notice that (i) these particulars do not constitute any part of an offer or contract, (ii) all statements contained within these particulars are made without responsibility on the part of Chestertons or the vendor, (iii) whilst made in good faith, none of the statements contained within these particulars are to be relied upon as a statement or representation of fact, (iv) any intending purchasers must satisfy themselves by inspection or otherwise as to the correctness of each of the statements contained within these particulars, (v) the vendor does not make or give either Chestertons or any person in their employment any authority to make or give representation or warranty whatsoever in relation to this property. Wide angle lenses may be used. ©Copyright Chestertons | Chesterton UK Services Limited | Registered Office 40 Connaught Street, Hyde Park, London W2 2AB Registered Company Number 05334580.



This paper is
100% recyclable