



Paget Road, Trumpington

+44 (0) 1223 508050

lettings@cookecurtis.co.uk

www.cookecurtis.co.uk

A well presented furnished, all inclusive double bedroom on the ground floor within a professional 7 bedroomed shared house situated in Trumpington. Ideally located for easy access to Addenbrookes, M11 and guided bus route to Cambridge City Centre and Train station. Available early April. Single occupation only.

£625 pcm

Paget Road, Cambridge, CB2
9JF



This modern property provides high quality accommodation for up to six professionals spread over three floors.

The ground floor comprises of an entrance hall with storage units and two double bedrooms. An open plan kitchen living area complete with white goods, large double fridge, cooker, washing machine, dryer and dishwasher. Dining table with chairs and a large corner sofa, double patio doors leading out onto the large garden.

First floor has three bedrooms two doubles and one single. A separate WC with the second bathroom, this with a wash basin and shower over bath. The second floor has the third bathroom with wash basin, WC and bath with shower over and a storage cabinet. The final two bedrooms can then also be found on the second floor.



To the rear of the property is a lovely large garden with a section of decking and an outhouse with garden equipment and storage space. Space for two cars on a drive to the front of the property otherwise parking is on street.

Bedroom 2 – Furnished with bed, wardrobe, desk, chair bedside tables and bookshelf. Single occupancy only. Utilities and WIFI included. Tenant to source their own Tv license if required.

Available from 10th April 2026.





130.6sqm/ 1406 sqft

7 beds 1 recep 3 bath

Shared house

EPC - C / 71

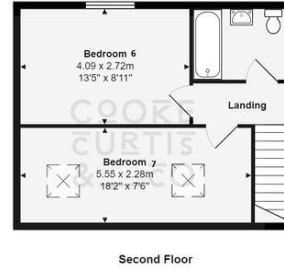
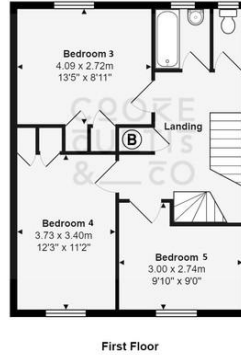
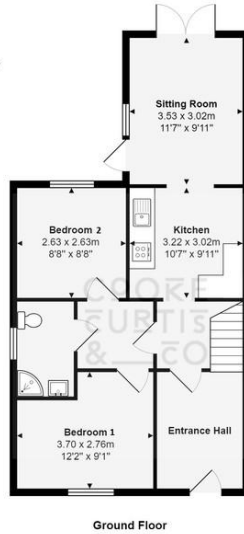
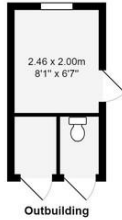
On & Off Street Parking

Inclusive of Utilities

Fully Furnished

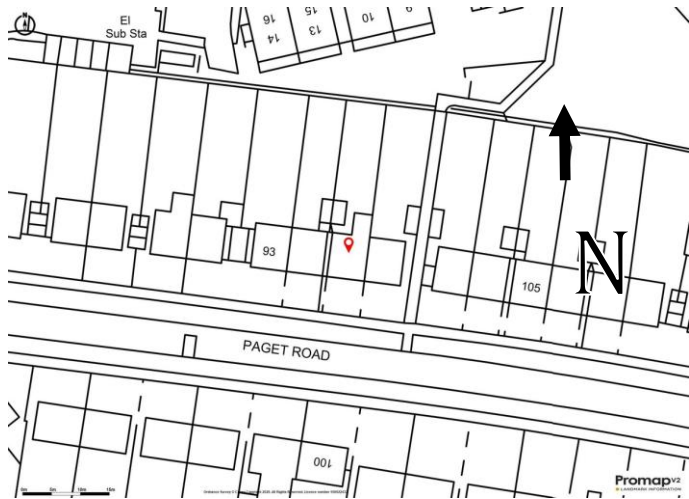
Available April 2026

Paget Road, Cambridge



Total Area: 130.6 m² ... 1406 ft²
All measurements are approximate and for display purposes only
Plan prepared by: charlesharrison.co.uk

COOKE
CURTIS
& CO



Trumpington is a thriving, fast growing part of the city that still manages to retain its village identity and sense of community. It is exceptionally well located for access into the Addenbrooke's campus, out to the M11 and into the city by car, bus, guided bus, one of a few purpose built cycle routes, or even an enthusiastic walk. The city's mainline station can be easily reached along the guided busway cycleway without having to mix with car traffic at all. The area has two primary schools as well as a brand new state-of-the-art secondary school that opened in 2016 which also provides excellent sporting facilities. A number of private schools are within cycling distance. There are also various restaurants, pubs, shops, a post office, hairdresser, surgery, chemist, Waitrose supermarket and two new country parks.

COOKE
CURTIS
& CO